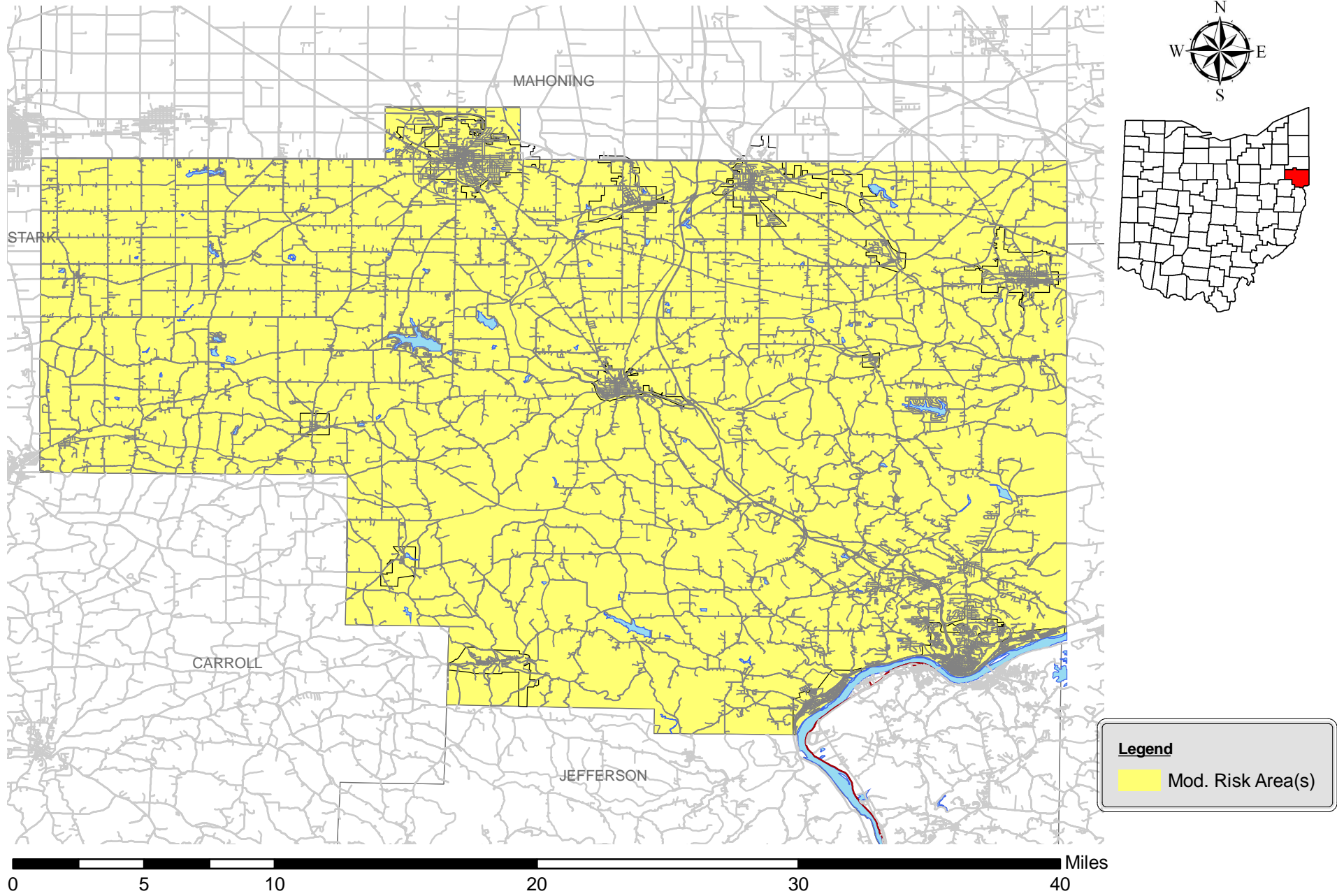


Name/Description of Asset	Structure Use and Function Loss (Task A3)									Structure + Contents + Function Loss
	Average Daily Operating Budget (\$)	X	Functional Downtime (# of days)	+	Displacement Cost per Day (\$)	X	Displacement Time (Days)	=	Structure Use & Function Loss (\$)	
Homer Laughlin House	\$0	X	0	+	\$0	X	0	=	\$0	\$550
Lisbon Historic District	\$0	X	0	+	\$0	X	0	=	\$0	\$4,000
Daniel McBean Farmstead	\$0	X	0	+	\$0	X	0	=	\$0	\$225
Odd Fellows Temple	\$0	X	0	+	\$0	X	0	=	\$0	\$575
Mary A. Patterson Memorial	\$0	X	0	+	\$0	X	0	=	\$0	\$300
Potters National Bank	\$0	X	0	+	\$0	X	0	=	\$0	\$1,350
Salem Downtown Historic District	\$0	X	0	+	\$0	X	0	=	\$0	\$3,250
Charles Nelson Schmick House	\$0	X	0	+	\$0	X	0	=	\$0	\$450
John Street House	\$0	X	0	+	\$0	X	0	=	\$0	\$425
Teegarden-Centennial Covered Bridge	\$0	X	0	+	\$0	X	0	=	\$0	\$475
Cassius Clark Thompson House	\$0	X	0	+	\$0	X	0	=	\$0	\$600
Travelers Hotel	\$0	X	0	+	\$0	X	0	=	\$0	\$850
YMCA	\$0	X	0	+	\$0	X	0	=	\$0	\$465
Residential	\$0	X	0	+	\$0	X	0	=	\$0	\$565,056
Total Loss to Structure Use & Function									\$1,546,500	\$2,460,448

HAZARD MAPPING: SEVERE WIND/TORNADO



## 2.2 PROFILING HAZARDS

### 2.2.8. Severe Winter Storm

A winter storm is a type of storm in which the dominant varieties of precipitation are forms that only occur at cold temperatures such as snow or sleet, or a rainstorm where ground temperatures are cold enough to allow ice to form.

#### INTRODUCTION

One or more of the following characterizes a winter storm: heavy snow, ice storms, strong winds, extreme cold, and, in certain areas, coastal flooding and beach erosion. Winter storms vary in size and strength and can be accompanied by strong winds that create blizzard conditions and dangerous wind chills. There are three (3) categories of winter storms. A blizzard is the most dangerous of all winter storms. It combines low temperatures, heavy snowfall, and winds of at least 35 miles per hour (mph) reduce visibility to only a few yards. A heavy snowstorm is one that drops four (4) or more inches of snow in a 12-hour period.

Period of Occurrence:	Winter season.
Number of Events to Date (2006 – 2012):	12
Probability of Event:	Likely.
Warning Time:	Snow – Days. Ice – Minutes to hours.
Potential Impacts:	Utility damage and outages, infrastructure damage (transportation and communication systems), structural damage, damaged critical facilities. Can cause severe transportation problems and make travel extremely dangerous. Power outages, which result in loss of electrical power and potentially loss of heat. Extreme cold temperatures may lead to frozen water mains and pipes, damaged car engines, and prolonged exposure to cold resulting in frostbite.
Cause Injury or Death:	Injury.
Potential Facility Shutdown:	Days.

Figure 2.8a

An ice storm occurs when moisture falls and freezes immediately upon impact.

For the purposes of this Hazard Risk Assessment (HRA), it is assumed that the northern portion of Columbiana County is at greater risk from severe winter storm events than the southern portion. Several methods of research identified winter storm as a hazard in Columbiana County, including reviews of newspaper coverage, reviews of past disaster declarations, reviews of the Columbiana County Emergency Operations Plan

(EOP), public input, and reviews of the National Climatic Data Center (NCDC) Event Record database.

<b>High Probability Low Impact</b>	<b>High Probability Moderate Impact</b>	<b>High Probability High Impact</b>
<b>Moderate Probability Low Impact</b>	<b>Moderate Probability Moderate Impact</b>	<b>Moderate Probability High Impact</b>
<b>Low Probability Low Impact</b>	<b>Low Probability Moderate Impact</b>	<b>Low Probability High Impact</b>

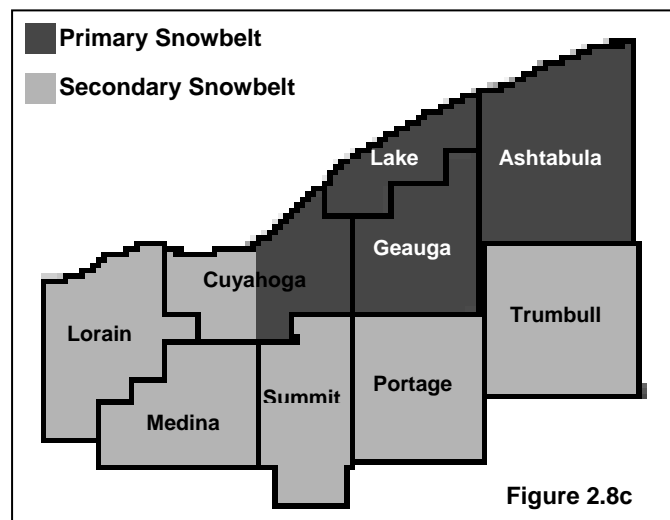
Figure 2.8b

## HAZARD IDENTIFICATION

Columbiana County is vulnerable to the wide-ranging effects of snowstorms, blizzards, ice storms, and severe cold snaps due to its location with respect to the great lakes. According to several members of the Core Planning Committee (CPC), as well as historical research the northern portion of the county experiences far more winter storms than the southern portion, and the impact of those winter storms are greater in the northern portion of the county.

Research indicates that winter storms are the third leading weather threat in Ohio. The storms of 1950 and 1978 were of a duration that required extensive mass sheltering and statewide response and recovery efforts. A total of 269 winter storms from 1923 to 1994 have been classified as severe in Ohio.

There are two (2) snow-belts in Northeast Ohio: a Primary and a Secondary. The primary snow-belt in Northeast Ohio consists of counties and portions of counties located just south and east of Lake Erie. These include eastern Cuyahoga, Geauga, Lake, and Ashtabula counties. Lakeshore communities in snow-belt counties can expect to receive 60 to 110 inches of snow every winter. A secondary snow-belt exists that includes the counties of Western Cuyahoga, Lorain, Medina, Summit, Portage, and Trumbull.



These counties receive lake effect snow when wind conditions are such that snow carries farther south. Columbiana County is located to the south of the secondary snow-



belt, separated from it by Mahoning County, and receives approximately 28 inches of snowfall per year.

## HISTORY OF EVENTS

According to local officials on average Columbiana County receives at least one (1) severe winter storm per year. The storms are usually severe enough in nature to result in the activation of the county Emergency Operations Center (EOC). There has been at least one (1) Presidential Declaration as a result of the severe blizzard that occurred on January 26, 1978. Columbiana County has had several severe winter storms reported to the NCDC. In total, the NCDC indicates that 13 snow and ice events have occurred over the past six (6) years. Severe winter storms are common in this part of the state due to its location and proximity to Lake Erie.

- February 21, 2011: Snow rates associated with a severe winter storm exceeded two (2) inches per hour with visibilities near zero. Between six (6) and nine (9) inches of snow fell over much of Columbiana County. Many school districts were closed as a result of the snow storm.
- February 01, 2011: A surface low pressure system moved over the Ohio Valley and western Pennsylvania bringing light snow changing to sleet and freezing rain. Ice accumulations ranged from ¼ to ½ inch over eastern Ohio. The weight of the ice caused downed trees and power outages throughout Columbiana County.
- February 05, 2010: This storm dumped between 10 – 20 inches of snow on eastern Ohio, southwestern Pennsylvania and northern West Virginia. Travel during this event was very treacherous with some roads impassable for several days. It took several days for road and power company crews to completely cleanup after this event. Damage and clean up costs for this storm were not available at the time of this report.
- December 13, 2009: A low pressure system with warm air ahead of it moved in to the Ohio Valley and quickly developed in to freezing rain across the region. Untreated roadways accumulated up to one tenth (0.1) of an inch of ice making travel nearly impossible between 6 A.M. and 10 A.M. and accounting for a large number of accidents throughout the region. One of these accidents resulted in a fatality in nearby Beaver County, Pennsylvania

- March 7, 2008: A large late winter storm moved slowly across the Ohio valley and produced heavy snow which mixed at times with sleet and freezing rain. The heaviest snow accumulations were across eastern Ohio where more than a foot of snow fell. Ice accumulation from freezing rain also ranged from a tenth of an inch to over one quarter in combination with the snow and sleet.

## HAZARD IMPACT

A severe winter storm could affect the entire county at the same time, virtually bringing all county operations to a standstill. This type of hazard creates a difficult emergency response effort due to adverse road conditions which impede or prohibit vehicle movement. Driving is treacherous during winter storms as roadways freeze and become covered with snow and slush. These adverse driving conditions may lead to additional property damage. According to a FEMA Winter Storm Fact Sheet, the leading cause of death during winter storms is from automobile or other transportation accidents. During severe winter storms, heavy snow may cause property damage and power outages. Roads are sometimes blocked, stranding rural residents from the incorporated areas where medical and other emergency services are located. Heavy snowfall and blizzards can trap motorists in their cars. Attempting to walk for help in a blizzard can be a deadly decision. Disorientation and confusion come quickly in blowing snow. Risks associated and identified with severe winter storms include but are not limited to the following:

- Emergency medical evacuation of the sick, elderly, and infirmed to shelters.
- Power outages to those on life support systems.
- Communications interruptions and/or outages.
- Loss of the ability to heat homes.
- Interruption of the delivery of home supplies and food.

Health hazards stemming from severe winter storms include frostbite and hypothermia. Frostbite is a severe reaction to cold exposure that can permanently damage its victims. A loss of feeling and a white or pale appearance in fingers, toes, the nose, and/or ear lobes are symptoms of frostbite.

Hypothermia is a condition brought on when the body temperature drops to less than 95.0 degrees Fahrenheit. Symptoms of hypothermia include uncontrollable

shivering, slow speech, memory lapses, frequent stumbling, drowsiness, and exhaustion.

### **PAST MITIGATION EFFORTS**

One of the most common impacts from severe weather is the loss of commercial power. Since many other services rely on power for critical functions, providing backup power capabilities has long been a favored strategy for mitigating damages from winter storms. Other mitigation efforts that have been conducted include the development and distribution of public awareness materials about natural hazard risks, utilizing the media for the distribution and publication of hazard information, and updating the county website to provide hazard related information that is easily accessible.

### **HAZARD MAPPING**

See the Columbiana County Severe Winter Storm Map for a graphical representation of the hazard areas with regard to severe winter storms. The green areas represent “low hazard areas,” the yellow areas represent “moderate hazard areas,” the orange areas represent “high hazard areas,” and the red areas represent “extreme high hazard areas.”

### Hazard: Severe Winter Storm

Type of Structure (Occupancy Class)	Number of Structures			Value of Structures			Number of People		
	# in Community	# in Hazard Area	% in Hazard Area	\$ in Community	\$ in Hazard Area	% in Hazard Area	# in Community	# in Hazard Area	% in Hazard Area
<i>Residential</i>	47,088	37,670	80%	\$3,767,040,000	\$10,800,000	0.29%	107,841	97,060	90%
<i>Commercial</i>	1,578	1,105	70%	\$631,200,000	\$1,140,000	0.18%	17,469	12,228	70%
<i>Industrial</i>	444	333	75%	\$222,000,000	\$787,500	0.35%	6,505	4,879	75%
<i>Agricultural</i>	4,120	3,296	80%	\$721,000,000	\$2,884,000	0.40%	3,090	2,472	80%
<i>Religious/Non-Profit</i>	103	72	70%	\$20,600,000	\$140,000	0.68%	4,120	2,884	70%
<i>Government</i>	45	34	75%	\$18,000,000	\$120,000	0.67%	1,350	1,012	75%
<i>Education</i>	46	35	75%	\$17,250,000	\$105,000	0.61%	18,276	13,707	75%
<i>Utilities</i>	20	15	75%	\$30,000,000	\$67,500	0.23%	60	45	75%
<b>Total</b>	<b>53,444</b>	<b>42,560</b>	<b>80%</b>	<b>\$5,427,090,000</b>	<b>\$16,044,000</b>	<b>0.30%</b>	<b>158,711</b>	<b>134,287</b>	<b>85%</b>

- |   | Yes | No |
|---|-----|----|
| 1. Do you know where your greatest damages may occur in your hazard areas?  | X   |    |
| 2. Do you know whether your critical facilities will be operational after a hazard event?   |     | X  |
| 3. Is there enough data to determine which assets are subject to the greatest potential damages?  | X   |    |
| 4. Is there enough data to determine whether significant elements of the community are vulnerable to potential hazards?   | X   |    |
| 5. Is there enough data to determine whether certain areas of historic, environmental, political, or cultural significance are vulnerable to potential hazards? | X   |    |
| 6. Is there concern about a particular hazard because of its severity, repetitiveness, or likelihood of occurrence?   | X   |    |
| 7. Is additional data needed to justify the expenditure of community or state funds for mitigation initiatives?   |     | X  |

### Hazard: Severe Winter Storm

Name/Description of Asset	Structure Loss (Task A1)					Contents Loss (Task A2)				
	Structure Replacement Value (\$)	X	Percent Damage (%)	=	Loss to Structure (\$)	Replacement Value of Contents (\$)	X	Percent Damage (%)	=	Loss to Contents (\$)
Columbiana County Courthouse	\$1,850,000	X	0.30%	=	\$5,550	\$700,000	X	0%	=	\$0
Columbiana City Hall	\$1,250,000	X	0.30%	=	\$3,750	\$400,000	X	0%	=	\$0
East Liverpool City Hall	\$650,000	X	0.25%	=	\$1,625	\$325,000	X	0%	=	\$0
East Palestine Village Offices	\$425,000	X	0.30%	=	\$1,275	\$275,000	X	0%	=	\$0
Hanoverton Village Offices	\$375,000	X	0.25%	=	\$938	\$225,000	X	0%	=	\$0
Salem City Hall	\$976,800	X	0.30%	=	\$2,930	\$390,000	X	0%	=	\$0
Salineville Village Offices	\$311,900	X	0.25%	=	\$780	\$190,000	X	0%	=	\$0
Wellsville Village Offices	\$518,100	X	0.25%	=	\$1,295	\$300,000	X	0%	=	\$0
Leetonia Village Offices	\$335,000	X	0.30%	=	\$1,005	\$90,000	X	0%	=	\$0
Lisbon Village Offices	\$979,500	X	0.25%	=	\$2,449	\$395,000	X	0%	=	\$0
New Waterford Village Offices	\$265,000	X	0.30%	=	\$795	\$75,000	X	0%	=	\$0
Washingtonville Village Offices	\$250,000	X	0.30%	=	\$750	\$55,000	X	0%	=	\$0
Elkrun Township Hall	\$145,000	X	0.25%	=	\$363	\$70,000	X	0%	=	\$0
Fairfield Township Hall	\$360,000	X	0.30%	=	\$1,080	\$220,000	X	0%	=	\$0
Madison Township Hall	\$245,000	X	0.25%	=	\$613	\$165,000	X	0%	=	\$0
Salem Township Hall	\$310,000	X	0.30%	=	\$930	\$200,000	X	0%	=	\$0
Bridges	\$115,000,000	X	0%	=	\$0	\$0	X	0%	=	\$0
Highways	\$1,525,000,000	X	0%	=	\$0	\$0	X	0%	=	\$0
Railroads	\$85,000,000	X	0%	=	\$0	\$0	X	0%	=	\$0
Columbiana County Airport	\$679,200	X	0.25%	=	\$1,698	\$203,760	X	0%	=	\$0
Columbiana County Port Authority	\$595,000	X	0.25%	=	\$1,488	\$148,750	X	0%	=	\$0
East Liverpool Water Works	\$1,895,000	X	0.25%	=	\$4,738	\$3,550,000	X	0%	=	\$0
East Palestine Sewer and Water	\$3,165,000	X	0.30%	=	\$9,495	\$3,500,000	X	0%	=	\$0
Leetonia Water Board	\$1,750,000	X	0.30%	=	\$5,250	\$2,110,000	X	0%	=	\$0
Salem Sewage Plant	\$7,450,000	X	0.30%	=	\$22,350	\$6,250,000	X	0%	=	\$0
Salineville Water Plant	\$2,450,000	X	0.25%	=	\$6,125	\$3,000,000	X	0%	=	\$0

Name/Description of Asset	Structure Loss (Task A1)					Contents Loss (Task A2)				
	Structure Replacement Value (\$)	X	Percent Damage (%)	=	Loss to Structure (\$)	Replacement Value of Contents (\$)	X	Percent Damage (%)	=	Loss to Contents (\$)
Washingtonville Water and Sewer	\$9,355,000	X	0.30%	=	\$28,065	\$10,000,000	X	0%	=	\$0
Wellsville Filtration Plant	\$985,000	X	0.25%	=	\$2,463	\$1,255,000	X	0%	=	\$0
Wellsville Sewage Disposal	\$1,553,000	X	0.25%	=	\$3,883	\$2,875,000	X	0%	=	\$0
Buckeye Water District	\$3,650,000	X	0.25%	=	\$9,125	\$4,250,000	X	0%	=	\$0
Columbiana City Water Works/Sewer Dept.	\$2,655,000	X	0.25%	=	\$6,638	\$3,150,000	X	0%	=	\$0
Leetonia Sewage Plant	\$3,950,000	X	0.30%	=	\$11,850	\$4,550,000	X	0%	=	\$0
Lisbon Village Water Dept.	\$1,875,000	X	0.25%	=	\$4,688	\$2,000,000	X	0%	=	\$0
New Waterford Water / Waste Water Plant	\$2,455,000	X	0.30%	=	\$7,365	\$3,655,000	X	0%	=	\$0
Salineville Sewer Plant	\$5,650,000	X	0.25%	=	\$14,125	\$5,000,000	X	0%	=	\$0
Columbiana County Sheriff	\$350,000	X	0.25%	=	\$875	\$625,000	X	0%	=	\$0
Columbiana County EMA	\$565,000	X	0.25%	=	\$1,413	\$200,000	X	0%	=	\$0
Columbiana County 911 Ctr.	\$265,000	X	0.25%	=	\$663	\$635,000	X	0%	=	\$0
Columbiana PD	\$225,000	X	0.30%	=	\$675	\$325,000	X	0%	=	\$0
East Liverpool PD	\$215,000	X	0.25%	=	\$538	\$289,000	X	0%	=	\$0
East Palestine PD	\$210,000	X	0.30%	=	\$630	\$198,000	X	0%	=	\$0
Leetonia PD	\$235,000	X	0.30%	=	\$705	\$105,000	X	0%	=	\$0
Lisbon PD	\$979,500	X	0.25%	=	\$2,449	\$320,000	X	0%	=	\$0
Liverpool Township PD	\$200,000	X	0.25%	=	\$500	\$165,000	X	0%	=	\$0
New Waterford PD	\$310,000	X	0.30%	=	\$930	\$175,000	X	0%	=	\$0
Ohio State Highway Patrol	\$865,000	X	0.25%	=	\$2,163	\$455,000	X	0%	=	\$0
Perry Township PD	\$309,900	X	0.25%	=	\$775	\$170,000	X	0%	=	\$0
Salem PD	\$395,000	X	0.30%	=	\$1,185	\$265,000	X	0%	=	\$0
Salineville PD	\$311,900	X	0.25%	=	\$780	\$250,000	X	0%	=	\$0
St. Clair Township PD	\$295,000	X	0.25%	=	\$738	\$175,000	X	0%	=	\$0
Washingtonville PD	\$235,000	X	0.30%	=	\$705	\$145,000	X	0%	=	\$0
Wellsville PD	\$518,100	X	0.25%	=	\$1,295	\$325,000	X	0%	=	\$0
Calcutta FD	\$170,000	X	0.25%	=	\$425	\$645,000	X	0%	=	\$0
Columbiana FD	\$426,700	X	0.30%	=	\$1,280	\$890,000	X	0%	=	\$0
East Liverpool FD	\$135,300	X	0.25%	=	\$338	\$465,000	X	0%	=	\$0

Name/Description of Asset	Structure Loss (Task A1)					Contents Loss (Task A2)				
	Structure Replacement Value (\$)	X	Percent Damage (%)	=	Loss to Structure (\$)	Replacement Value of Contents (\$)	X	Percent Damage (%)	=	Loss to Contents (\$)
East Palestine FD	\$192,300	X	0.30%	=	\$577	\$385,000	X	0%	=	\$0
Franklin Township VFD	\$95,850	X	0.25%	=	\$240	\$245,000	X	0%	=	\$0
Hanoverton VFD	\$235,450	X	0.25%	=	\$589	\$300,000	X	0%	=	\$0
Guilford Lake FD	\$195,000	X	0.25%	=	\$488	\$345,000	X	0%	=	\$0
Highlandtown VFD	\$104,900	X	0.25%	=	\$262	\$295,000	X	0%	=	\$0
Homeworth VFD	\$113,900	X	0.25%	=	\$285	\$310,000	X	0%	=	\$0
Leetonia FD/EMS	\$124,500	X	0.30%	=	\$374	\$565,000	X	0%	=	\$0
Lisbon FD	\$325,000	X	0.25%	=	\$813	\$610,000	X	0%	=	\$0
Dixonville FD	\$84,500	X	0.25%	=	\$211	\$285,000	X	0%	=	\$0
Lacroft VFD	\$149,300	X	0.25%	=	\$373	\$365,000	X	0%	=	\$0
Negley VFD/EMS	\$110,200	X	0.25%	=	\$276	\$410,000	X	0%	=	\$0
New Waterford FD	\$150,900	X	0.30%	=	\$453	\$425,000	X	0%	=	\$0
North Georgetown VFD	\$100,100	X	0.25%	=	\$250	\$315,000	X	0%	=	\$0
Perry Township VFD	\$309,900	X	0.25%	=	\$775	\$565,000	X	0%	=	\$0
Rogers Village FD	\$161,000	X	0.25%	=	\$403	\$435,650	X	0%	=	\$0
Salem FD	\$215,500	X	0.30%	=	\$647	\$565,000	X	0%	=	\$0
Salineville VFD	\$311,900	X	0.25%	=	\$780	\$325,000	X	0%	=	\$0
Wellsville VFD	\$143,600	X	0.25%	=	\$359	\$415,000	X	0%	=	\$0
West Point FD	\$200,000	X	0.25%	=	\$500	\$365,000	X	0%	=	\$0
Winona FD	\$172,500	X	0.25%	=	\$431	\$375,000	X	0%	=	\$0
Glenmoor VFD	\$752,000	X	0.25%	=	\$1,880	\$650,000	X	0%	=	\$0
Air Evac Lifeteam 81	\$86,600	X	0.25%	=	\$217	\$0	X	0%	=	\$0
EMT Ambulance	\$112,200	X	0.25%	=	\$281	\$240,000	X	0%	=	\$0
Lifeteam EMS Inc.	\$135,000	X	0.25%	=	\$338	\$220,000	X	0%	=	\$0
KLG Ambulance / MICU	\$76,500	X	0.25%	=	\$191	\$182,000	X	0%	=	\$0
North Star Critical Care	\$84,900	X	0.25%	=	\$212	\$175,000	X	0%	=	\$0
Maple-Cotton Funeral Home and EMS	\$165,000	X	0.25%	=	\$413	\$200,000	X	0%	=	\$0
Tri-County Ambulance	\$118,600	X	0.25%	=	\$297	\$190,000	X	0%	=	\$0
Columbiana EMS	\$426,800	X	0.30%	=	\$1,280	\$350,000	X	0%	=	\$0
Leetonia EMS	\$185,000	X	0.30%	=	\$555	\$265,000	X	0%	=	\$0
New Waterford EMS	\$175,000	X	0.30%	=	\$525	\$215,000	X	0%	=	\$0
East Palestine EMS	\$265,000	X	0.30%	=	\$795	\$300,000	X	0%	=	\$0
East Liverpool City Hospital	\$16,750,000	X	0.25%	=	\$41,875	\$8,000,000	X	0%	=	\$0
Salem Community Hospital	\$17,250,000	X	0.30%	=	\$51,750	\$8,350,000	X	0%	=	\$0



Name/Description of Asset	Structure Loss (Task A1)					Contents Loss (Task A2)				
	Structure Replacement Value (\$)	X	Percent Damage (%)	=	Loss to Structure (\$)	Replacement Value of Contents (\$)	X	Percent Damage (%)	=	Loss to Contents (\$)
Parkside Healthcare Center	\$2,172,700	X	0.30%	=	\$6,518	\$410,000	X	0%	=	\$0
Vista Center	\$3,536,000	X	0.25%	=	\$8,840	\$475,000	X	0%	=	\$0
Blossom Nursing and Rehab. Center	\$1,650,000	X	0.25%	=	\$4,125	\$215,000	X	0%	=	\$0
Calcutta Healthcare Center	\$4,947,200	X	0.25%	=	\$12,368	\$500,000	X	0%	=	\$0
East Liverpool Convalescent Center	\$539,600	X	0.25%	=	\$1,349	\$275,000	X	0%	=	\$0
Nentwick Convalescent Home	\$2,109,100	X	0.25%	=	\$5,273	\$315,000	X	0%	=	\$0
Essex of Salem #1	\$1,768,800	X	0.30%	=	\$5,306	\$500,000	X	0%	=	\$0
Essex of Salem #2	\$1,882,800	X	0.30%	=	\$5,648	\$465,000	X	0%	=	\$0
Essex of Salem #3	\$1,569,900	X	0.30%	=	\$4,710	\$395,000	X	0%	=	\$0
Pleasant view North Retirement	\$1,243,300	X	0.30%	=	\$3,730	\$380,000	X	0%	=	\$0
Salem Care Center	\$1,443,900	X	0.30%	=	\$4,332	\$350,000	X	0%	=	\$0
Assisted Living Ministry Services	\$212,800	X	0.25%	=	\$532	\$185,000	X	0%	=	\$0
Crossroads at Beaver Creek	\$3,450,000	X	0.25%	=	\$8,625	\$550,000	X	0%	=	\$0
Grace Woods Senior Living	\$897,300	X	0.25%	=	\$2,243	\$365,000	X	0%	=	\$0
The Renaissance at Vista	\$3,536,000	X	0.25%	=	\$8,840	\$465,000	X	0%	=	\$0
Sterling House of Salem	\$325,000	X	0.25%	=	\$813	\$350,000	X	0%	=	\$0
Whispering Pines Village	\$415,000	X	0.30%	=	\$1,245	\$300,000	X	0%	=	\$0
St. Mary's Alzheimer's Center	\$650,000	X	0.25%	=	\$1,625	\$495,000	X	0%	=	\$0
Adkins Nursing Home	\$315,000	X	0.25%	=	\$788	\$256,000	X	0%	=	\$0
Great Trail Care Center	\$225,000	X	0.25%	=	\$563	\$195,000	X	0%	=	\$0
Holander House	\$200,000	X	0.25%	=	\$500	\$165,000	X	0%	=	\$0
Twin Oaks Retirement Center	\$600,000	X	0.25%	=	\$1,500	\$435,000	X	0%	=	\$0
Covington Skilled Nursing & Rehab Ctr.	\$795,000	X	0.25%	=	\$1,988	\$495,000	X	0%	=	\$0
American Health Care	\$435,000	X	0.25%	=	\$1,088	\$400,000	X	0%	=	\$0
Harmony Village	\$275,500	X	0.25%	=	\$689	\$165,000	X	0%	=	\$0
Courtyard at Lexington	\$595,000	X	0.25%	=	\$1,488	\$285,000	X	0%	=	\$0

Name/Description of Asset	Structure Loss (Task A1)					Contents Loss (Task A2)				
	Structure Replacement Value (\$)	X	Percent Damage (%)	=	Loss to Structure (\$)	Replacement Value of Contents (\$)	X	Percent Damage (%)	=	Loss to Contents (\$)
Century House of Salem	\$275,000	X	0.25%	=	\$688	\$250,000	X	0%	=	\$0
Columbiana County Mental Health	\$560,000	X	0.30%	=	\$1,680	\$325,000	X	0%	=	\$0
Beaver Local HS	\$4,756,100	X	0.25%	=	\$11,890	\$295,000	X	0%	=	\$0
Beaver Local MS	\$2,866,200	X	0.25%	=	\$7,166	\$255,000	X	0%	=	\$0
Buckeye ES	\$1,914,500	X	0.25%	=	\$4,786	\$195,000	X	0%	=	\$0
Calcutta ES	\$1,624,700	X	0.25%	=	\$4,062	\$165,000	X	0%	=	\$0
Columbiana Co. Career and Technical Ctr.	\$6,888,400	X	0.25%	=	\$17,221	\$1,250,000	X	0%	=	\$0
Columbiana HS	\$5,657,000	X	0.30%	=	\$16,971	\$355,000	X	0%	=	\$0
Crestview ES	\$200,000	X	0.30%	=	\$600	\$185,000	X	0%	=	\$0
Crestview MS/HS	\$12,341,800	X	0.30%	=	\$37,025	\$650,000	X	0%	=	\$0
David Anderson Jr/Sr HS	\$4,015,300	X	0.25%	=	\$10,038	\$565,000	X	0%	=	\$0
DAW MS	\$2,232,400	X	0.25%	=	\$5,581	\$245,000	X	0%	=	\$0
East ES	\$1,455,000	X	0.25%	=	\$3,638	\$195,000	X	0%	=	\$0
East Liverpool Jr./Sr. HS	\$12,683,000	X	0.25%	=	\$31,708	\$365,000	X	0%	=	\$0
East Palestine ES	\$1,365,000	X	0.30%	=	\$4,095	\$225,000	X	0%	=	\$0
East Palestine MS	\$3,450,000	X	0.30%	=	\$10,350	\$285,000	X	0%	=	\$0
East Palestine HS	\$5,000,000	X	0.30%	=	\$15,000	\$400,000	X	0%	=	\$0
Garfield ES	\$1,383,000	X	0.25%	=	\$3,458	\$225,000	X	0%	=	\$0
Joshua Dixon ES	\$1,622,900	X	0.30%	=	\$4,869	\$265,000	X	0%	=	\$0
Lacroft ES	\$4,765,600	X	0.25%	=	\$11,914	\$300,000	X	0%	=	\$0
Leetonia K-12	\$3,650,000	X	0.30%	=	\$10,950	\$415,000	X	0%	=	\$0
Mckinley ES	\$2,000,000	X	0.25%	=	\$5,000	\$150,000	X	0%	=	\$0
North ES	\$2,155,000	X	0.25%	=	\$5,388	\$165,000	X	0%	=	\$0
Reilly ES	\$2,566,500	X	0.25%	=	\$6,416	\$180,000	X	0%	=	\$0
Rogers ES	\$1,714,100	X	0.25%	=	\$4,285	\$155,000	X	0%	=	\$0
Salem Jr./Sr. HS	\$8,977,100	X	0.30%	=	\$26,931	\$455,000	X	0%	=	\$0
South Side MS	\$4,000,000	X	0.30%	=	\$12,000	\$235,000	X	0%	=	\$0
Southeast ES	\$2,975,700	X	0.25%	=	\$7,439	\$195,000	X	0%	=	\$0
Southern Local K-12	\$4,650,000	X	0.25%	=	\$11,625	\$300,000	X	0%	=	\$0
United K-12	\$9,694,000	X	0.25%	=	\$24,235	\$495,000	X	0%	=	\$0
Wellsville HS	\$7,347,800	X	0.25%	=	\$18,370	\$325,000	X	0%	=	\$0
West Point ES	\$614,200	X	0.25%	=	\$1,536	\$140,000	X	0%	=	\$0
Westgate MS	\$3,695,300	X	0.25%	=	\$9,238	\$280,000	X	0%	=	\$0
Act 1 Education Ctr. Jr. HS	\$900,100	X	0.25%	=	\$2,250	\$165,000	X	0%	=	\$0

Name/Description of Asset	Structure Loss (Task A1)					Contents Loss (Task A2)				
	Structure Replacement Value (\$)	X	Percent Damage (%)	=	Loss to Structure (\$)	Replacement Value of Contents (\$)	X	Percent Damage (%)	=	Loss to Contents (\$)
American Spirit Academy K-12	\$469,700	X	0.25%	=	\$1,174	\$180,000	X	0%	=	\$0
Heartland Christian School K-12	\$4,950,000	X	0.30%	=	\$14,850	\$545,000	X	0%	=	\$0
St. Aloysius ES	\$275,000	X	0.25%	=	\$688	\$200,000	X	0%	=	\$0
St. Paul ES	\$3,000,000	X	0.25%	=	\$7,500	\$155,000	X	0%	=	\$0
American Standards Brands	\$985,000	X	0.25%	=	\$2,463	\$425,000	X	0%	=	\$0
Flex-N-Gate/Ventra Salem	\$1,795,000	X	0.25%	=	\$4,488	\$500,000	X	0%	=	\$0
Fresh Mark Inc.	\$895,000	X	0.25%	=	\$2,238	\$350,000	X	0%	=	\$0
Wal-Mart Stores Inc.	\$6,985,000	X	0.25%	=	\$17,463	\$1,650,000	X	0%	=	\$0
Pioneer Pottery Inc	\$550,000	X	0.25%	=	\$1,375	\$110,000	X	0%	=	\$0
Zarbana Industries	\$455,000	X	0.30%	=	\$1,365	\$450,000	X	0%	=	\$0
Miller Casting	\$750,000	X	0.30%	=	\$2,250	\$650,000	X	0%	=	\$0
Columbiana Foundry Company	\$400,000	X	0.30%	=	\$1,200	\$375,000	X	0%	=	\$0
Kensington PO	\$315,000	X	0.25%	=	\$788	\$80,000	X	0%	=	\$0
Summitville PO	\$215,000	X	0.25%	=	\$538	\$56,000	X	0%	=	\$0
Columbiana PO	\$500,000	X	0.30%	=	\$1,500	\$175,000	X	0%	=	\$0
New Waterford PO	\$225,000	X	0.30%	=	\$675	\$65,000	X	0%	=	\$0
Calcutta PO	\$175,000	X	0.25%	=	\$438	\$60,000	X	0%	=	\$0
Winona PO	\$200,000	X	0.25%	=	\$500	\$70,000	X	0%	=	\$0
Homeworth PO	\$150,000	X	0.25%	=	\$375	\$55,000	X	0%	=	\$0
East Liverpool PO	\$436,400	X	0.25%	=	\$1,091	\$155,000	X	0%	=	\$0
East Palestine PO	\$244,500	X	0.30%	=	\$734	\$75,000	X	0%	=	\$0
East Rochester PO	\$230,000	X	0.25%	=	\$575	\$85,000	X	0%	=	\$0
Hanoverton PO	\$300,000	X	0.25%	=	\$750	\$80,000	X	0%	=	\$0
Rogers PO	\$325,000	X	0.25%	=	\$813	\$75,000	X	0%	=	\$0
Salem PO	\$596,600	X	0.30%	=	\$1,790	\$195,000	X	0%	=	\$0
Salineville PO	\$315,000	X	0.25%	=	\$788	\$65,000	X	0%	=	\$0
Negley PO	\$295,000	X	0.25%	=	\$738	\$85,000	X	0%	=	\$0
North Georgetown PO	\$250,000	X	0.25%	=	\$625	\$60,000	X	0%	=	\$0
Leetonia PO	\$134,800	X	0.30%	=	\$404	\$62,500	X	0%	=	\$0
Lisbon PO	\$614,300	X	0.25%	=	\$1,536	\$250,000	X	0%	=	\$0
Elkton PO	\$210,000	X	0.25%	=	\$525	\$69,500	X	0%	=	\$0
Washingtonville PO	\$265,000	X	0.30%	=	\$795	\$80,000	X	0%	=	\$0

Name/Description of Asset	Structure Loss (Task A1)					Contents Loss (Task A2)				
	Structure Replacement Value (\$)	X	Percent Damage (%)	=	Loss to Structure (\$)	Replacement Value of Contents (\$)	X	Percent Damage (%)	=	Loss to Contents (\$)
Wellsville PO	\$145,600	X	0.25%	=	\$364	\$67,500	X	0%	=	\$0
Carnegie Public Library	\$442,600	X	0.25%	=	\$1,107	\$250,000	X	0%	=	\$0
Columbiana Public Library	\$1,312,500	X	0.30%	=	\$3,938	\$355,000	X	0%	=	\$0
East Palestine Memorial Public Library	\$826,600	X	0.30%	=	\$2,480	\$315,000	X	0%	=	\$0
Leetonia Community Public Library	\$2,122,600	X	0.30%	=	\$6,368	\$550,000	X	0%	=	\$0
Lepper Library	\$580,000	X	0.25%	=	\$1,450	\$275,000	X	0%	=	\$0
Salem Public Library	\$1,184,400	X	0.30%	=	\$3,553	\$400,000	X	0%	=	\$0
Wellsville Public Library	\$367,900	X	0.25%	=	\$920	\$220,000	X	0%	=	\$0
Hiram Bell Farmstead	\$165,000	X	0.25%	=	\$413	\$0	X	0%	=	\$0
Burchfield Homestead	\$125,000	X	0.25%	=	\$313	\$50,000	X	0%	=	\$0
Richard L Cawood Residence	\$95,000	X	0.25%	=	\$238	\$45,000	X	0%	=	\$0
Cherry Valley Coke Ovens	\$85,000	X	0.30%	=	\$255	\$0	X	0%	=	\$0
Church Hill Road Covered Bridge	\$450,000	X	0.25%	=	\$1,125	\$0	X	0%	=	\$0
Diamond Historic District	\$3,000,000	X	0.25%	=	\$7,500	\$0	X	0%	=	\$0
East Liverpool Historic District	\$2,000,000	X	0.25%	=	\$5,000	\$0	X	0%	=	\$0
East Liverpool Pottery	\$215,000	X	0.25%	=	\$538	\$200,000	X	0%	=	\$0
Nicholas Eckis House	\$150,000	X	0.25%	=	\$375	\$65,000	X	0%	=	\$0
Elks Club	\$135,000	X	0.25%	=	\$338	\$35,000	X	0%	=	\$0
Sandy and Beaver Canal District	\$675,000	X	0.25%	=	\$1,688	\$0	X	0%	=	\$0
Godwin Knowles House	\$185,000	X	0.25%	=	\$463	\$80,000	X	0%	=	\$0
Hanna-Kenty House	\$140,000	X	0.25%	=	\$350	\$70,000	X	0%	=	\$0
Hanoverton Canal Town District	\$1,750,000	X	0.25%	=	\$4,375	\$0	X	0%	=	\$0
Franklin Harris Farmstead	\$200,000	X	0.25%	=	\$500	\$65,000	X	0%	=	\$0
Daniel Howell Hise House	\$95,000	X	0.25%	=	\$238	\$45,000	X	0%	=	\$0
Hostetter Inn	\$465,000	X	0.25%	=	\$1,163	\$140,000	X	0%	=	\$0
Ikirt House	\$85,000	X	0.25%	=	\$213	\$35,000	X	0%	=	\$0
Homer Laughlin House	\$110,000	X	0.25%	=	\$275	\$40,000	X	0%	=	\$0

	Structure Loss (Task A1)					Contents Loss (Task A2)					
Name/Description of Asset	Structure Replacement Value (\$)	X	Percent Damage (%)	=	Loss to Structure (\$)	Replacement Value of Contents (\$)	X	Percent Damage (%)	=	Loss to Contents (\$)	
Lisbon Historic District	\$4,000,000	X	0.25%	=	\$10,000	\$0	X	0%	=	\$0	
Daniel McBean Farmstead	\$225,000	X	0.25%	=	\$563	\$80,000	X	0%	=	\$0	
Odd Fellows Temple	\$115,000	X	0.25%	=	\$288	\$65,000	X	0%	=	\$0	
Mary A. Patterson Memorial	\$60,000	X	0.25%	=	\$150	\$0	X	0%	=	\$0	
Potters National Bank	\$270,000	X	0.25%	=	\$675	\$110,000	X	0%	=	\$0	
Salem Downtown Historic District	\$3,250,000	X	0.30%	=	\$9,750	\$0	X	0%	=	\$0	
Charles Nelson Schmick House	\$90,000	X	0.30%	=	\$270	\$60,000	X	0%	=	\$0	
John Street House	\$85,000	X	0.25%	=	\$213	\$45,000	X	0%	=	\$0	
Teegarden-Centennial Covered Bridge	\$475,000	X	0.25%	=	\$1,188	\$0	X	0%	=	\$0	
Cassius Clark Thompson House	\$120,000	X	0.25%	=	\$300	\$65,250	X	0%	=	\$0	
Travelers Hotel	\$850,000	X	0.25%	=	\$2,125	\$250,000	X	0%	=	\$0	
YMCA	\$465,000	X	0.25%	=	\$1,163	\$125,000	X	0%	=	\$0	
Residential	\$3,767,040,000	X	0.02%	=	\$753,408	\$1,883,520,000	X	0%	=	\$0	
Total Loss to Structure					\$1,635,993	Total Loss to Contents					\$0

### Hazard: Severe Winter Storm

Name/Description of Asset	Structure Use and Function Loss (Task A3)									Structure + Contents + Function Loss
	Average Daily Operating Budget (\$)	X	Functional Downtime (# of days)	+	Displacement Cost per Day (\$)	X	Displacement Time (Days)	=	Structure Use & Function Loss (\$)	
Columbiana County Courthouse	\$550,000	X	0	+	\$5,000	X	0	=	\$0	\$5,550
Columbiana City Hall	\$275,000	X	0	+	\$4,200	X	0	=	\$0	\$3,750
East Liverpool City Hall	\$250,000	X	0	+	\$3,250	X	0	=	\$0	\$1,625
East Palestine Village Offices	\$220,000	X	0	+	\$3,000	X	0	=	\$0	\$1,275
Hanoverton Village Offices	\$155,000	X	0	+	\$2,100	X	0	=	\$0	\$938
Salem City Hall	\$280,000	X	0	+	\$3,400	X	0	=	\$0	\$2,930
Salineville Village Offices	\$150,000	X	0	+	\$1,500	X	0	=	\$0	\$780
Wellsville Village Offices	\$165,000	X	0	+	\$1,000	X	0	=	\$0	\$1,295
Leetonia Village Offices	\$110,000	X	0	+	\$1,000	X	0	=	\$0	\$1,005
Lisbon Village Offices	\$290,000	X	0	+	\$1,100	X	0	=	\$0	\$2,449
New Waterford Village Offices	\$100,000	X	0	+	\$1,000	X	0	=	\$0	\$795
Washingtonville Village Offices	\$90,000	X	0	+	\$1,000	X	0	=	\$0	\$750
Elkrun Township Hall	\$95,000	X	0	+	\$1,000	X	0	=	\$0	\$363
Fairfield Township Hall	\$140,000	X	0	+	\$1,000	X	0	=	\$0	\$1,080
Madison Township Hall	\$125,000	X	0	+	\$1,000	X	0	=	\$0	\$613
Salem Township Hall	\$125,000	X	0	+	\$1,000	X	0	=	\$0	\$930
Bridges	\$0	X	0	+	\$0	X	0	=	\$0	\$0
Highways	\$0	X	0	+	\$0	X	0	=	\$0	\$0
Railroads	\$0	X	0	+	\$0	X	0	=	\$0	\$0
Columbiana County Airport	\$0	X	0	+	\$0	X	0	=	\$0	\$1,698
Columbiana County Port Authority	\$0	X	0	+	\$0	X	0	=	\$0	\$1,488
East Liverpool Water Works	\$1,000,000	X	0	+	\$30,000	X	0	=	\$0	\$4,738
East Palestine Sewer and Water	\$750,000	X	0	+	\$20,000	X	0	=	\$0	\$9,495
Leetonia Water Board	\$375,000	X	0	+	\$35,000	X	0	=	\$0	\$5,250
Salem Sewage Plant	\$12,000,000	X	0	+	\$800,000	X	0	=	\$0	\$22,350
Salineville Water Plant	\$410,000	X	0	+	\$12,000	X	0	=	\$0	\$6,125

Name/Description of Asset	Structure Use and Function Loss (Task A3)									Structure + Contents + Function Loss
	Average Daily Operating Budget (\$)	X	Functional Downtime (# of days)	+	Displacement Cost per Day (\$)	X	Displacement Time (Days)	=	Structure Use & Function Loss (\$)	
Washingtonville Water and Sewer	\$13,450,000	X	0	+	\$95,000	X	0	=	\$0	\$28,065
Wellsville Filtration Plant	\$280,000	X	0	+	\$9,000	X	0	=	\$0	\$2,463
Wellsville Sewage Disposal	\$750,000	X	0	+	\$18,000	X	0	=	\$0	\$3,883
Buckeye Water District	\$2,350,000	X	0	+	\$40,000	X	0	=	\$0	\$9,125
Columbiana City Water Works/Sewer Dept.	\$1,675,000	X	0	+	\$35,000	X	0	=	\$0	\$6,638
Leetonia Sewage Plant	\$6,000,000	X	0	+	\$65,000	X	0	=	\$0	\$11,850
Lisbon Village Water Dept.	\$3,250,000	X	0	+	\$48,000	X	0	=	\$0	\$4,688
New Waterford Water / Waste Water Plant	\$3,000,000	X	0	+	\$45,000	X	0	=	\$0	\$7,365
Salineville Sewer Plant	\$8,650,000	X	0	+	\$75,000	X	0	=	\$0	\$14,125
Columbiana County Sheriff	\$14,400	X	0	+	\$2,000	X	0	=	\$0	\$875
Columbiana County EMA	\$2,200	X	0	+	\$0	X	0	=	\$0	\$1,413
Columbiana County 911 Ctr.	\$10,000	X	0	+	\$0	X	0	=	\$0	\$663
Columbiana PD	\$5,500	X	0	+	\$0	X	0	=	\$0	\$675
East Liverpool PD	\$3,000	X	0	+	\$0	X	0	=	\$0	\$538
East Palestine PD	\$2,600	X	0	+	\$0	X	0	=	\$0	\$630
Leetonia PD	\$7,000	X	0	+	\$0	X	0	=	\$0	\$705
Lisbon PD	\$6,000	X	0	+	\$0	X	0	=	\$0	\$2,449
Liverpool Township PD	\$3,200	X	0	+	\$0	X	0	=	\$0	\$500
New Waterford PD	\$4,000	X	0	+	\$0	X	0	=	\$0	\$930
Ohio State Highway Patrol	\$80,000	X	0	+	\$0	X	0	=	\$0	\$2,163
Perry Township PD	\$2,500	X	0	+	\$0	X	0	=	\$0	\$775
Salem PD	\$8,000	X	0	+	\$0	X	0	=	\$0	\$1,185
Salineville PD	\$9,000	X	0	+	\$0	X	0	=	\$0	\$780
St. Clair Township PD	\$5,500	X	0	+	\$0	X	0	=	\$0	\$738
Washingtonville PD	\$3,500	X	0	+	\$0	X	0	=	\$0	\$705
Wellsville PD	\$10,000	X	0	+	\$0	X	0	=	\$0	\$1,295
Calcutta FD	\$4,800	X	0	+	\$0	X	0	=	\$0	\$425
Columbiana FD	\$6,000	X	0	+	\$0	X	0	=	\$0	\$1,280
East Liverpool FD	\$4,200	X	0	+	\$0	X	0	=	\$0	\$338



Name/Description of Asset	Structure Use and Function Loss (Task A3)									Structure + Contents + Function Loss
	Average Daily Operating Budget (\$)	X	Functional Downtime (# of days)	+	Displacement Cost per Day (\$)	X	Displacement Time (Days)	=	Structure Use & Function Loss (\$)	
East Palestine FD	\$3,800	X	0	+	\$0	X	0	=	\$0	\$577
Franklin Township VFD	\$3,000	X	0	+	\$0	X	0	=	\$0	\$240
Hanoverton VFD	\$4,500	X	0	+	\$0	X	0	=	\$0	\$589
Guilford Lake FD	\$6,000	X	0	+	\$0	X	0	=	\$0	\$488
Highlandtown VFD	\$4,800	X	0	+	\$0	X	0	=	\$0	\$262
Homeworth VFD	\$5,000	X	0	+	\$0	X	0	=	\$0	\$285
Leetonia FD/EMS	\$7,000	X	0	+	\$0	X	0	=	\$0	\$374
Lisbon FD	\$10,000	X	0	+	\$0	X	0	=	\$0	\$813
Dixonville FD	\$3,500	X	0	+	\$0	X	0	=	\$0	\$211
Lacroft VFD	\$4,500	X	0	+	\$0	X	0	=	\$0	\$373
Negley VFD/EMS	\$3,900	X	0	+	\$0	X	0	=	\$0	\$276
New Waterford FD	\$4,600	X	0	+	\$0	X	0	=	\$0	\$453
North Georgetown VFD	\$5,550	X	0	+	\$0	X	0	=	\$0	\$250
Perry Township VFD	\$8,000	X	0	+	\$0	X	0	=	\$0	\$775
Rogers Village FD	\$6,500	X	0	+	\$0	X	0	=	\$0	\$403
Salem FD	\$10,000	X	0	+	\$0	X	0	=	\$0	\$647
Salineville VFD	\$5,100	X	0	+	\$0	X	0	=	\$0	\$780
Wellsville VFD	\$4,600	X	0	+	\$0	X	0	=	\$0	\$359
West Point FD	\$4,800	X	0	+	\$0	X	0	=	\$0	\$500
Winona FD	\$5,000	X	0	+	\$0	X	0	=	\$0	\$431
Glenmoor VFD	\$12,000	X	0	+	\$0	X	0	=	\$0	\$1,880
Air Evac Lifeteam 81	\$100,000	X	0	+	\$0	X	0	=	\$0	\$217
EMT Ambulance	\$6,500	X	0	+	\$0	X	0	=	\$0	\$281
Lifeteam EMS Inc.	\$7,000	X	0	+	\$0	X	0	=	\$0	\$338
KLG Ambulance / MICU	\$5,800	X	0	+	\$0	X	0	=	\$0	\$191
North Star Critical Care	\$4,000	X	0	+	\$0	X	0	=	\$0	\$212
Maple-Cotton Funeral Home and EMS	\$3,200	X	0	+	\$0	X	0	=	\$0	\$413
Tri-County Ambulance	\$3,500	X	0	+	\$0	X	0	=	\$0	\$297
Columbiana EMS	\$8,000	X	0	+	\$0	X	0	=	\$0	\$1,280
Leetonia EMS	\$4,300	X	0	+	\$0	X	0	=	\$0	\$555
New Waterford EMS	\$4,000	X	0	+	\$0	X	0	=	\$0	\$525
East Palestine EMS	\$6,000	X	0	+	\$0	X	0	=	\$0	\$795
East Liverpool City Hospital	\$750,000	X	0	+	\$104,000	X	0	=	\$0	\$41,875
Salem Community Hospital	\$800,000	X	0	+	\$120,000	X	0	=	\$0	\$51,750

Name/Description of Asset	Structure Use and Function Loss (Task A3)									Structure + Contents + Function Loss
	Average Daily Operating Budget (\$)	X	Functional Downtime (# of days)	+	Displacement Cost per Day (\$)	X	Displacement Time (Days)	=	Structure Use & Function Loss (\$)	
Parkside Healthcare Center	\$300,000	X	0	+	\$30,000	X	0	=	\$0	\$6,518
Vista Center	\$350,000	X	0	+	\$35,000	X	0	=	\$0	\$8,840
Blossom Nursing and Rehab. Center	\$300,000	X	0	+	\$30,000	X	0	=	\$0	\$4,125
Calcutta Healthcare Center	\$375,000	X	0	+	\$40,000	X	0	=	\$0	\$12,368
East Liverpool Convalescent Center	\$300,000	X	0	+	\$30,000	X	0	=	\$0	\$1,349
Nentwick Convalescent Home	\$425,000	X	0	+	\$36,000	X	0	=	\$0	\$5,273
Essex of Salem #1	\$450,000	X	0	+	\$40,000	X	0	=	\$0	\$5,306
Essex of Salem #2	\$425,000	X	0	+	\$37,000	X	0	=	\$0	\$5,648
Essex of Salem #3	\$375,000	X	0	+	\$31,000	X	0	=	\$0	\$4,710
Pleasant view North Retirement	\$415,000	X	0	+	\$33,000	X	0	=	\$0	\$3,730
Salem Care Center	\$400,000	X	0	+	\$37,500	X	0	=	\$0	\$4,332
Assisted Living Ministry Services	\$365,000	X	0	+	\$34,000	X	0	=	\$0	\$532
Crossroads at Beaver Creek	\$650,000	X	0	+	\$43,000	X	0	=	\$0	\$8,625
Grace Woods Senior Living	\$425,000	X	0	+	\$39,500	X	0	=	\$0	\$2,243
The Renaissance at Vista	\$500,000	X	0	+	\$42,000	X	0	=	\$0	\$8,840
Sterling House of Salem	\$435,000	X	0	+	\$40,000	X	0	=	\$0	\$813
Whispering Pines Village	\$395,000	X	0	+	\$35,000	X	0	=	\$0	\$1,245
St. Mary's Alzheimer's Center	\$465,000	X	0	+	\$42,000	X	0	=	\$0	\$1,625
Adkins Nursing Home	\$400,000	X	0	+	\$35,000	X	0	=	\$0	\$788
Great Trail Care Center	\$365,000	X	0	+	\$30,000	X	0	=	\$0	\$563
Holander House	\$370,000	X	0	+	\$31,000	X	0	=	\$0	\$500
Twin Oaks Retirement Center	\$550,000	X	0	+	\$42,500	X	0	=	\$0	\$1,500
Covington Skilled Nursing & Rehab Ctr.	\$565,000	X	0	+	\$43,000	X	0	=	\$0	\$1,988
American Health Care	\$415,000	X	0	+	\$33,000	X	0	=	\$0	\$1,088
Harmony Village	\$485,000	X	0	+	\$36,000	X	0	=	\$0	\$689

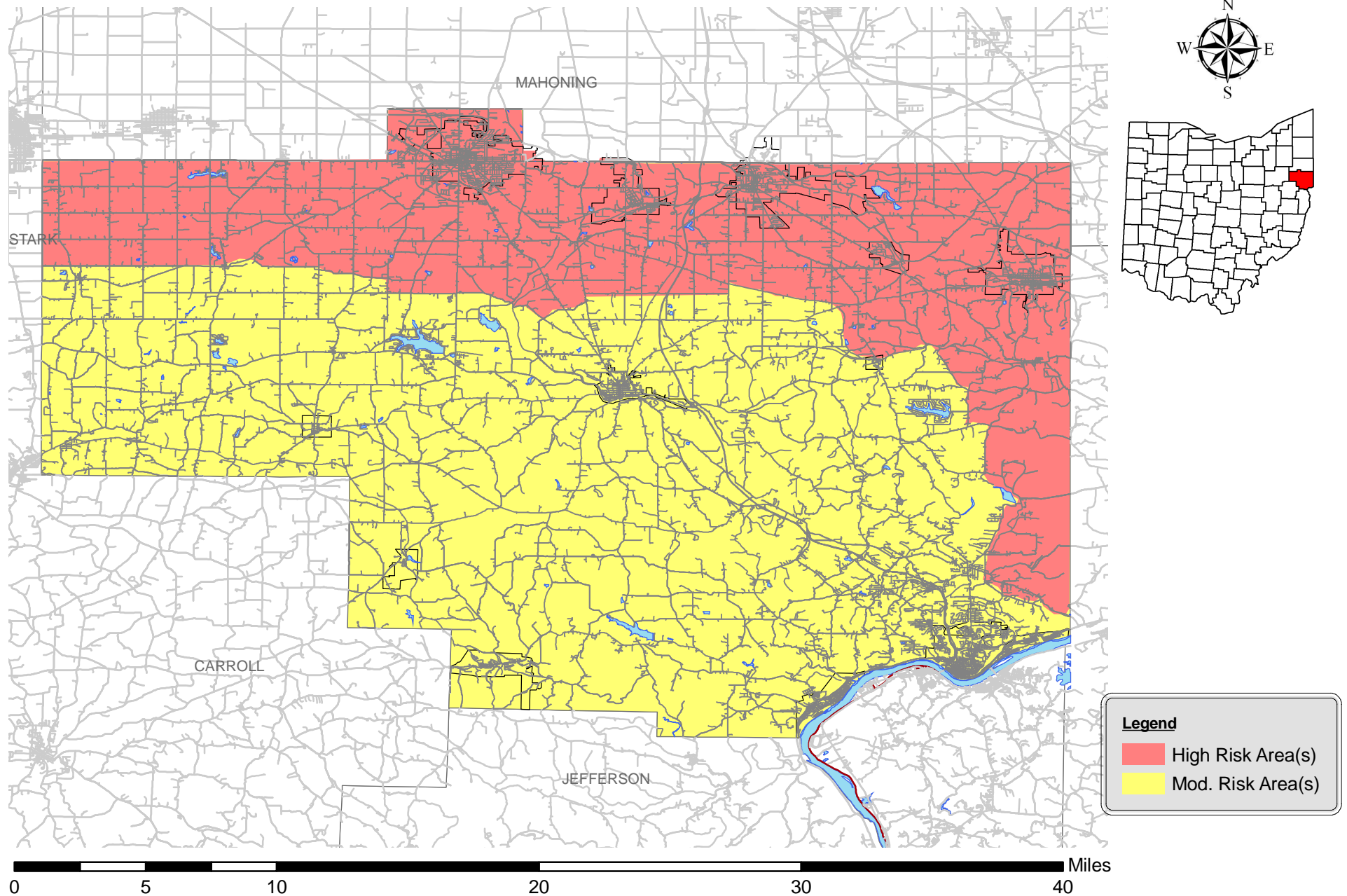
Name/Description of Asset	Structure Use and Function Loss (Task A3)									Structure + Contents + Function Loss
	Average Daily Operating Budget (\$)	X	Functional Downtime (# of days)	+	Displacement Cost per Day (\$)	X	Displacement Time (Days)	=	Structure Use & Function Loss (\$)	
Courtyard at Lexington	\$585,000	X	0	+	\$43,500	X	0	=	\$0	\$1,488
Century House of Salem	\$480,000	X	0	+	\$35,500	X	0	=	\$0	\$688
Columbiana County Mental Health	\$400,000	X	0	+	\$31,000	X	0	=	\$0	\$1,680
Beaver Local HS	\$43,000	X	2	+	\$0	X	0	=	\$86,000	\$97,890
Beaver Local MS	\$32,000	X	2	+	\$0	X	0	=	\$64,000	\$71,166
Buckeye ES	\$25,000	X	2	+	\$0	X	0	=	\$50,000	\$54,786
Calcutta ES	\$22,500	X	2	+	\$0	X	0	=	\$45,000	\$49,062
Columbiana Co. Career and Technical Ctr.	\$280,000	X	2	+	\$0	X	0	=	\$560,000	\$577,221
Columbiana HS	\$40,000	X	2	+	\$0	X	0	=	\$80,000	\$96,971
Crestview ES	\$25,000	X	2	+	\$0	X	0	=	\$50,000	\$50,600
Crestview MS/HS	\$75,000	X	2	+	\$0	X	0	=	\$150,000	\$187,025
David Anderson Jr/Sr HS	\$54,000	X	2	+	\$0	X	0	=	\$108,000	\$118,038
DAW MS	\$33,000	X	2	+	\$0	X	0	=	\$66,000	\$71,581
East ES	\$26,500	X	2	+	\$0	X	0	=	\$53,000	\$56,638
East Liverpool Jr./Sr. HS	\$38,000	X	2	+	\$0	X	0	=	\$76,000	\$107,708
East Palestine ES	\$23,000	X	2	+	\$0	X	0	=	\$46,000	\$50,095
East Palestine MS	\$35,000	X	2	+	\$0	X	0	=	\$70,000	\$80,350
East Palestine HS	\$40,000	X	2	+	\$0	X	0	=	\$80,000	\$95,000
Garfield ES	\$22,500	X	2	+	\$0	X	0	=	\$45,000	\$48,458
Joshua Dixon ES	\$26,000	X	2	+	\$0	X	0	=	\$52,000	\$56,869
Lacroft ES	\$35,000	X	2	+	\$0	X	0	=	\$70,000	\$81,914
Leetonia K-12	\$39,500	X	2	+	\$0	X	0	=	\$79,000	\$89,950
Mckinley ES	\$25,000	X	2	+	\$0	X	0	=	\$50,000	\$55,000
North ES	\$28,500	X	2	+	\$0	X	0	=	\$57,000	\$62,388
Reilly ES	\$30,000	X	2	+	\$0	X	0	=	\$60,000	\$66,416
Rogers ES	\$26,500	X	2	+	\$0	X	0	=	\$53,000	\$57,285
Salem Jr./Sr. HS	\$60,000	X	2	+	\$0	X	0	=	\$120,000	\$146,931
South Side MS	\$33,000	X	2	+	\$0	X	0	=	\$66,000	\$78,000
Southeast ES	\$23,500	X	2	+	\$0	X	0	=	\$47,000	\$54,439
Southern Local K-12	\$48,500	X	2	+	\$0	X	0	=	\$97,000	\$108,625
United K-12	\$70,000	X	2	+	\$0	X	0	=	\$140,000	\$164,235
Wellsville HS	\$65,000	X	2	+	\$0	X	0	=	\$130,000	\$148,370
West Point ES	\$31,000	X	2	+	\$0	X	0	=	\$62,000	\$63,536
Westgate MS	\$38,000	X	2	+	\$0	X	0	=	\$76,000	\$85,238

Name/Description of Asset	Structure Use and Function Loss (Task A3)									Structure + Contents + Function Loss
	Average Daily Operating Budget (\$)	X	Functional Downtime (# of days)	+	Displacement Cost per Day (\$)	X	Displacement Time (Days)	=	Structure Use & Function Loss (\$)	
Act 1 Education Ctr. Jr. HS	\$22,000	X	2	+	\$0	X	0	=	\$44,000	\$46,250
American Spirit Academy K-12	\$20,000	X	2	+	\$0	X	0	=	\$40,000	\$41,174
Heartland Christian School K-12	\$48,500	X	2	+	\$0	X	0	=	\$97,000	\$111,850
St. Aloysius ES	\$29,500	X	2	+	\$0	X	0	=	\$59,000	\$59,688
St. Paul ES	\$32,500	X	2	+	\$0	X	0	=	\$65,000	\$72,500
American Standards Brands	\$44,800	X	0	+	\$11,200	X	0	=	\$0	\$2,463
Flex-N-Gate/Ventra Salem	\$38,000	X	0	+	\$9,500	X	0	=	\$0	\$4,488
Fresh Mark Inc.	\$35,000	X	0	+	\$8,000	X	0	=	\$0	\$2,238
Wal-Mart Stores Inc.	\$109,600	X	0	+	\$27,400	X	0	=	\$0	\$17,463
Pioneer Pottery Inc	\$30,000	X	0	+	\$7,000	X	0	=	\$0	\$1,375
Zarbara Industries	\$50,000	X	0	+	\$13,500	X	0	=	\$0	\$1,365
Miller Casting	\$65,000	X	0	+	\$14,000	X	0	=	\$0	\$2,250
Columbiana Foundry Company	\$40,000	X	0	+	\$10,000	X	0	=	\$0	\$1,200
Kensington PO	\$1,800	X	0	+	\$0	X	0	=	\$0	\$788
Summitville PO	\$2,100	X	0	+	\$0	X	0	=	\$0	\$538
Columbiana PO	\$4,800	X	0	+	\$0	X	0	=	\$0	\$1,500
New Waterford PO	\$3,600	X	0	+	\$0	X	0	=	\$0	\$675
Calcutta PO	\$3,000	X	0	+	\$0	X	0	=	\$0	\$438
Winona PO	\$3,250	X	0	+	\$0	X	0	=	\$0	\$500
Homeworth PO	\$2,850	X	0	+	\$0	X	0	=	\$0	\$375
East Liverpool PO	\$5,000	X	0	+	\$0	X	0	=	\$0	\$1,091
East Palestine PO	\$3,450	X	0	+	\$0	X	0	=	\$0	\$734
East Rochester PO	\$3,650	X	0	+	\$0	X	0	=	\$0	\$575
Hanoverton PO	\$4,000	X	0	+	\$0	X	0	=	\$0	\$750
Rogers PO	\$3,650	X	0	+	\$0	X	0	=	\$0	\$813
Salem PO	\$6,000	X	0	+	\$0	X	0	=	\$0	\$1,790
Salineville PO	\$3,350	X	0	+	\$0	X	0	=	\$0	\$788
Negley PO	\$4,250	X	0	+	\$0	X	0	=	\$0	\$738
North Georgetown PO	\$3,200	X	0	+	\$0	X	0	=	\$0	\$625
Leetonia PO	\$3,300	X	0	+	\$0	X	0	=	\$0	\$404
Lisbon PO	\$5,650	X	0	+	\$0	X	0	=	\$0	\$1,536

Name/Description of Asset	Structure Use and Function Loss (Task A3)									Structure + Contents + Function Loss
	Average Daily Operating Budget (\$)	X	Functional Downtime (# of days)	+	Displacement Cost per Day (\$)	X	Displacement Time (Days)	=	Structure Use & Function Loss (\$)	
Elkton PO	\$4,150	X	0	+	\$0	X	0	=	\$0	\$525
Washingtonville PO	\$4,100	X	0	+	\$0	X	0	=	\$0	\$795
Wellsville PO	\$3,450	X	0	+	\$0	X	0	=	\$0	\$364
Carnegie Public Library	\$1,600	X	0	+	\$800	X	0	=	\$0	\$1,107
Columbiana Public	\$12,000	X	0	+	\$1,250	X	0	=	\$0	\$3,938
East Palestine Memorial Public Library	\$9,500	X	0	+	\$1,000	X	0	=	\$0	\$2,480
Leetonia Community Public Library	\$22,000	X	0	+	\$2,000	X	0	=	\$0	\$6,368
Lepper Library	\$3,840	X	0	+	\$500	X	0	=	\$0	\$1,450
Salem Public Library	\$13,500	X	0	+	\$1,500	X	0	=	\$0	\$3,553
Wellsville Public Library	\$1,500	X	0	+	\$750	X	0	=	\$0	\$920
Hiram Bell Farmstead	\$0	X	0	+	\$0	X	0	=	\$0	\$413
Burchfield Homestead	\$0	X	0	+	\$0	X	0	=	\$0	\$313
Richard L Cawood Residence	\$0	X	0	+	\$0	X	0	=	\$0	\$238
Cherry Valley Coke Ovens	\$0	X	0	+	\$0	X	0	=	\$0	\$255
Church Hill Road Covered Bridge	\$0	X	0	+	\$0	X	0	=	\$0	\$1,125
Diamond Historic District	\$0	X	0	+	\$0	X	0	=	\$0	\$7,500
East Liverpool Historic District	\$0	X	0	+	\$0	X	0	=	\$0	\$5,000
East Liverpool Pottery	\$0	X	0	+	\$0	X	0	=	\$0	\$538
Nicholas Eckis House	\$0	X	0	+	\$0	X	0	=	\$0	\$375
Elks Club	\$0	X	0	+	\$0	X	0	=	\$0	\$338
Sandy and Beaver Canal District	\$0	X	0	+	\$0	X	0	=	\$0	\$1,688
Godwin Knowles House	\$0	X	0	+	\$0	X	0	=	\$0	\$463
Hanna-Kenty House	\$0	X	0	+	\$0	X	0	=	\$0	\$350
Hanoverton Canal Town District	\$0	X	0	+	\$0	X	0	=	\$0	\$4,375
Franklin Harris Farmstead	\$0	X	0	+	\$0	X	0	=	\$0	\$500
Daniel Howell Hise House	\$0	X	0	+	\$0	X	0	=	\$0	\$238
Hostetter Inn	\$0	X	0	+	\$0	X	0	=	\$0	\$1,163
Ilkirt House	\$0	X	0	+	\$0	X	0	=	\$0	\$213

Name/Description of Asset	Structure Use and Function Loss (Task A3)									Structure + Contents + Function Loss
	Average Daily Operating Budget (\$)	X	Functional Downtime (# of days)	+	Displacement Cost per Day (\$)	X	Displacement Time (Days)	=	Structure Use & Function Loss (\$)	
Homer Laughlin House	\$0	X	0	+	\$0	X	0	=	\$0	\$275
Lisbon Historic District	\$0	X	0	+	\$0	X	0	=	\$0	\$10,000
Daniel McBean Farmstead	\$0	X	0	+	\$0	X	0	=	\$0	\$563
Odd Fellows Temple	\$0	X	0	+	\$0	X	0	=	\$0	\$288
Mary A. Patterson Memorial	\$0	X	0	+	\$0	X	0	=	\$0	\$150
Potters National Bank	\$0	X	0	+	\$0	X	0	=	\$0	\$675
Salem Downtown Historic District	\$0	X	0	+	\$0	X	0	=	\$0	\$9,750
Charles Nelson Schmick House	\$0	X	0	+	\$0	X	0	=	\$0	\$270
John Street House	\$0	X	0	+	\$0	X	0	=	\$0	\$213
Teegarden-Centennial Covered Bridge	\$0	X	0	+	\$0	X	0	=	\$0	\$1,188
Cassius Clark Thompson House	\$0	X	0	+	\$0	X	0	=	\$0	\$300
Travelers Hotel	\$0	X	0	+	\$0	X	0	=	\$0	\$2,125
YMCA	\$0	X	0	+	\$0	X	0	=	\$0	\$1,163
Residential	\$0	X	0	+	\$0	X	0	=	\$0	\$753,408
Total Loss to Structure Use & Function									\$3,093,000	\$4,728,993

## HAZARD MAPPING: SEVERE WINTER STORM





## 2.2 PROFILING HAZARDS

### 2.2.9. Extreme Heat

Extreme heat is defined as three (3) or more consecutive days with daytime temperatures of 90 degrees Fahrenheit (90°F) or higher and nighttime temperatures no lower than 85°F, accompanied by high humidity and causing a significant amount of medically treated, heat-related illnesses or deaths.

#### INTRODUCTION

Extreme heat is a hazard usually found in more desert regions than Columbiana County, Ohio. However, extreme heat can and has been a hazard in Ohio, causing heat strokes to occur to residents and proving detrimental to crops. The highest reported temperature in Ohio through the year 2000 was 113 degrees Fahrenheit (113°F), and was recorded in Southeastern Ohio.

Period of Occurrence:	Summer season (July – Sept.).
Number of Events to Date: (1995 to 2010)	4
Probability of Event:	Occasional.
Warning Time:	Weeks.
Potential Impacts:	Potential loss of human life, economic loss.
Cause Injury or Death:	Illnesses and risk of few deaths.
Potential Facility Shutdown:	Days.

Figure 2.9a

Several methods of research identified extreme heat as a minor hazard in Columbiana County, including searches of local media, National Climatic Data Center (NCDC) Event Record Database, National Weather Service (NWS) records, and the Federal Emergency Management Agency (FEMA) website.

For the purposes of this Hazard Risk Assessment (HRA) it is assumed that the larger municipalities of Columbiana County are at greater risk from extreme heat, due to the fact that cities hold heat longer due to the amount of paved surfaces, and a large portion of the vulnerable populations are located in the larger cities.

High Probability Low Impact	High Probability Moderate Impact	High Probability High Impact
Moderate Probability Low Impact	Moderate Probability Moderate Impact	Moderate Probability High Impact
Low Probability Low Impact	Low Probability Moderate Impact	Low Probability High Impact

Figure 2.9b

## HAZARD IDENTIFICATION

Health hazards related to extreme heat include sunburns, heat cramps, heat exhaustion, and heat stroke. In a normal year, approximately 175 Americans die from extreme heat. Young children, the elderly, and those who are sick or overweight are more likely to become victims. According to 2010 Census, approximately 17% (18,486 people) of the total population in Columbiana County are 65 years old or older. Because men sweat more than women, men are more susceptible to heat related illnesses because they become more quickly dehydrated.

The Heat Index is the temperature the body feels when heat and humidity are combined. The chart below (Figure 2.9c) illustrates the heat Index that corresponds to the actual air temperature and relative humidity. This chart is based upon shady, light wind conditions. Exposure to direct sunlight can increase the heat index by up to 15°F.

As the heat index rises, so do health risks. When the heat index is 90°-104°F, heat exhaustion is possible. When it is above 105°F, it is probable. Heatstroke is possible when the heat

index is above 105°F, and very likely when it is 130°F and above. Physical activity and prolonged exposure to the heat increase the risks.

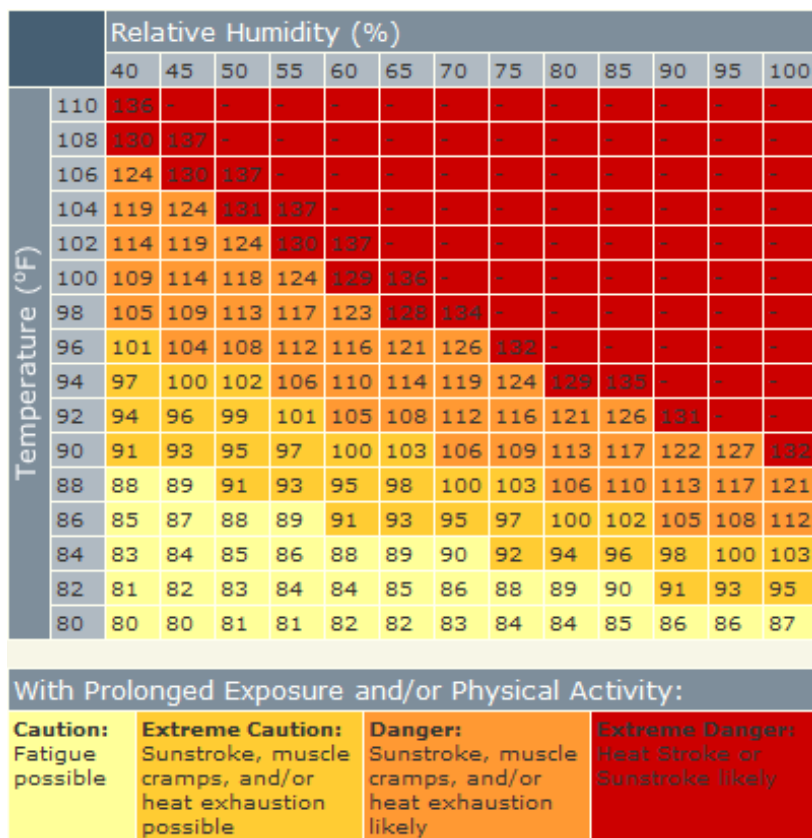


Figure 2.9c

## HISTORY OF EVENTS

There are no records available for extreme heat in Columbiana County specifically. However, northeastern Ohio has endured four (4) excessive heat events within the past 17 years these events have resulted in 18 fatalities and 75 illnesses.

Year	Conditions	Fatalities	Illnesses
7/1995	Record high temperatures near or exceeding 100°F along with excessive humidity occurred on the 14 <sup>th</sup> . Dewpoints were also unusually high, averaging near 80 which produced a heat index as high as 126°F in Toledo. A number of roads and sidewalks buckled from the heat.	0	12
8/1995	An unusually long period of hot weather with afternoon temperatures generally in the 90s and relatively high humidity caused injuries and fatalities. Twelve of the thirteen fatalities were older citizens, and all occurred in Cuyahoga County in the Cleveland urban area. Nights remained unusually warm and in a number of cases temperatures stayed in the 80s all night in the city which likely contributed to the heat related problems. Injuries were generally from heat stress/stroke. Older utility systems suffered a high incidence of breakdown due to prolonged high demand, and some roads buckled in the heat.	13	52
6/1999	Temperatures across northern Ohio were much above normal. Temperatures reached the lower 90s with record highs set in Findlay, Cleveland, Mansfield and Youngstown.	0	0
7/1999	Temperatures across northern Ohio were much above normal. High temperatures reached the middle 90s for several days, and five (5) daily record high temperatures were established at Mansfield and Youngstown. The temperatures reached 100°F in Lake County near Painesville on the 31 <sup>st</sup> . All major reporting stations in northern Ohio finished with average monthly temperatures among the ten warmest on record for July. Youngstown recorded its 6 <sup>th</sup> warmest July on record.	0	0

Table 2.9a

## HAZARD IMPACT

Approximately 400 people die each year from exposure to heat, according to the Centers for Disease Control and Prevention (CDC). Our bodies dissipate heat by varying the rate and depth of blood circulation, by losing water through the skin and sweat glands, and as a last resort, by panting, when body core temperature rises above 98.6°F.

Sweating cools the body through evaporation. However, high relative humidity retards evaporation, robbing the body of its ability to cool itself. When heat gain exceeds

the level the body can remove, body temperature begins to rise, and heat-related illnesses and disorders may develop.

Heat exhaustion occurs when the body is dehydrated.

- Symptoms: headache, nausea, dizziness, cool and clammy skin, pale face, cramps, weakness, profuse perspiration.
- First aid: move to a cooler spot, drink water with a small amount of salt added (one teaspoon per quart).
- It can lead to collapse and heatstroke.

Heatstroke occurs when perspiration cannot occur and the body overheats.

- Symptoms: headache, nausea, face flushed, hot and dry skin, no perspiration, body temperature over 101°F, chills, rapid pulse.
- First aid: cool person immediately, move to shade or indoors, wrap in a cool, wet sheet, get medical assistance.
- It can lead to confusion, coma, and death.

## **PAST MITIGATION EFFORTS**

The local ARC chapter in coordination with the local health department has identified cooling centers for vulnerable populations with air conditioning, and has developed an outreach program encouraging at-risk populations to use the centers.

## **HAZARD MAPPING**

See the Columbiana County Extreme Heat Map for a graphical representation of the hazard areas with regard to extreme heat. The green areas represent “low hazard areas,” the yellow areas represent “moderate hazard areas,” the orange areas represent “high hazard areas,” and the red areas represent “extreme high hazard areas.”

## Hazard: Extreme Heat

Type of Structure (Occupancy Class)	Number of Structures			Value of Structures			Number of People		
	# in Community	# in Hazard Area	% in Hazard Area	\$ in Community	\$ in Hazard Area	% in Hazard Area	# in Community	# in Hazard Area	% in Hazard Area
<i>Residential</i>	47,088	0	0%	\$3,767,040,000	\$0	0%	107,841	23,397	22%
<i>Commercial</i>	1,578	0	0%	\$631,200,000	\$0	0%	17,469	2,620	15%
<i>Industrial</i>	444	0	0%	\$222,000,000	\$0	0%	6,505	976	15%
<i>Agricultural</i>	4,120	0	0%	\$721,000,000	\$0	0%	3,090	618	20%
<i>Religious/Non-Profit</i>	103	0	0%	\$20,600,000	\$0	0%	4,120	618	15%
<i>Government</i>	45	0	0%	\$18,000,000	\$0	0%	1,350	203	15%
<i>Education</i>	46	0	0%	\$17,250,000	\$0	0%	18,276	1,828	10%
<i>Utilities</i>	20	0	0%	\$30,000,000	\$0	0%	60	9	15%
<b>Total</b>	<b>53,444</b>	<b>0</b>	<b>0%</b>	<b>\$5,427,090,000</b>	<b>\$0</b>	<b>0%</b>	<b>158,711</b>	<b>30,269</b>	<b>19%</b>

	Yes	No
1. Do you know where your greatest damages may occur in your hazard areas?	<u>          X          </u>	<u>                                </u>
2. Do you know whether your critical facilities will be operational after a hazard event?	<u>          X          </u>	<u>                                </u>
3. Is there enough data to determine which assets are subject to the greatest potential damages?	<u>                                </u>	<u>                  X          </u>
4. Is there enough data to determine whether significant elements of the community are vulnerable to potential hazards?	<u>          X          </u>	<u>                                </u>
5. Is there enough data to determine whether certain areas of historic, environmental, political, or cultural significance are vulnerable to potential hazards?	<u>          X          </u>	<u>                                </u>
6. Is there concern about a particular hazard because of its severity, repetitiveness, or likelihood of occurrence?	<u>                                </u>	<u>                  X          </u>
7. Is additional data needed to justify the expenditure of community or state funds for mitigation initiatives?	<u>                                </u>	<u>                  X          </u>

## Hazard: Extreme Heat

Name/Description of Asset	Structure Loss (Task A1)					Contents Loss (Task A2)				
	Structure Replacement Value (\$)	X	Percent Damage (%)	=	Loss to Structure (\$)	Replacement Value of Contents (\$)	X	Percent Damage (%)	=	Loss to Contents (\$)
Columbiana County Courthouse	\$1,850,000	X	0%	=	\$0	\$700,000	X	0%	=	\$0
Columbiana City Hall	\$1,250,000	X	0%	=	\$0	\$400,000	X	0%	=	\$0
East Liverpool City Hall	\$650,000	X	0%	=	\$0	\$325,000	X	0%	=	\$0
East Palestine Village Offices	\$425,000	X	0%	=	\$0	\$275,000	X	0%	=	\$0
Hanoverton Village Offices	\$375,000	X	0%	=	\$0	\$225,000	X	0%	=	\$0
Salem City Hall	\$976,800	X	0%	=	\$0	\$390,000	X	0%	=	\$0
Salineville Village Offices	\$311,900	X	0%	=	\$0	\$190,000	X	0%	=	\$0
Wellsville Village Offices	\$518,100	X	0%	=	\$0	\$300,000	X	0%	=	\$0
Leetonia Village Offices	\$335,000	X	0%	=	\$0	\$90,000	X	0%	=	\$0
Lisbon Village Offices	\$979,500	X	0%	=	\$0	\$395,000	X	0%	=	\$0
New Waterford Village Offices	\$265,000	X	0%	=	\$0	\$75,000	X	0%	=	\$0
Washingtonville Village Offices	\$250,000	X	0%	=	\$0	\$55,000	X	0%	=	\$0
Elkrun Township Hall	\$145,000	X	0%	=	\$0	\$70,000	X	0%	=	\$0
Fairfield Township Hall	\$360,000	X	0%	=	\$0	\$220,000	X	0%	=	\$0
Madison Township Hall	\$245,000	X	0%	=	\$0	\$165,000	X	0%	=	\$0
Salem Township Hall	\$310,000	X	0%	=	\$0	\$200,000	X	0%	=	\$0
Bridges	\$115,000,000	X	0%	=	\$0	\$0	X	0%	=	\$0
Highways	\$1,525,000,000	X	0%	=	\$0	\$0	X	0%	=	\$0
Railroads	\$85,000,000	X	0%	=	\$0	\$0	X	0%	=	\$0
Columbiana County Airport	\$679,200	X	0%	=	\$0	\$203,760	X	0%	=	\$0
Columbiana County Port Authority	\$595,000	X	0%	=	\$0	\$148,750	X	0%	=	\$0
East Liverpool Water Works	\$1,895,000	X	0%	=	\$0	\$3,550,000	X	0%	=	\$0
East Palestine Sewer and Water	\$3,165,000	X	0%	=	\$0	\$3,500,000	X	0%	=	\$0
Leetonia Water Board	\$1,750,000	X	0%	=	\$0	\$2,110,000	X	0%	=	\$0
Salem Sewage Plant	\$7,450,000	X	0%	=	\$0	\$6,250,000	X	0%	=	\$0
Salineville Water Plant	\$2,450,000	X	0%	=	\$0	\$3,000,000	X	0%	=	\$0

Name/Description of Asset	Structure Loss (Task A1)					Contents Loss (Task A2)				
	Structure Replacement Value (\$)	X	Percent Damage (%)	=	Loss to Structure (\$)	Replacement Value of Contents (\$)	X	Percent Damage (%)	=	Loss to Contents (\$)
Washingtonville Water and Sewer	\$9,355,000	X	0%	=	\$0	\$10,000,000	X	0%	=	\$0
Wellsville Filtration Plant	\$985,000	X	0%	=	\$0	\$1,255,000	X	0%	=	\$0
Wellsville Sewage Disposal	\$1,553,000	X	0%	=	\$0	\$2,875,000	X	0%	=	\$0
Buckeye Water District	\$3,650,000	X	0%	=	\$0	\$4,250,000	X	0%	=	\$0
Columbiana City Water Works/Sewer Dept.	\$2,655,000	X	0%	=	\$0	\$3,150,000	X	0%	=	\$0
Leetonia Sewage Plant	\$3,950,000	X	0%	=	\$0	\$4,550,000	X	0%	=	\$0
Lisbon Village Water Dept.	\$1,875,000	X	0%	=	\$0	\$2,000,000	X	0%	=	\$0
New Waterford Water / Waste Water Plant	\$2,455,000	X	0%	=	\$0	\$3,655,000	X	0%	=	\$0
Salineville Sewer Plant	\$5,650,000	X	0%	=	\$0	\$5,000,000	X	0%	=	\$0
Columbiana County Sheriff	\$350,000	X	0%	=	\$0	\$625,000	X	0%	=	\$0
Columbiana County EMA	\$565,000	X	0%	=	\$0	\$200,000	X	0%	=	\$0
Columbiana County 911 Ctr.	\$265,000	X	0%	=	\$0	\$635,000	X	0%	=	\$0
Columbiana PD	\$225,000	X	0%	=	\$0	\$325,000	X	0%	=	\$0
East Liverpool PD	\$215,000	X	0%	=	\$0	\$289,000	X	0%	=	\$0
East Palestine PD	\$210,000	X	0%	=	\$0	\$198,000	X	0%	=	\$0
Leetonia PD	\$235,000	X	0%	=	\$0	\$105,000	X	0%	=	\$0
Lisbon PD	\$979,500	X	0%	=	\$0	\$320,000	X	0%	=	\$0
Liverpool Township PD	\$200,000	X	0%	=	\$0	\$165,000	X	0%	=	\$0
New Waterford PD	\$310,000	X	0%	=	\$0	\$175,000	X	0%	=	\$0
Ohio State Highway Patrol	\$865,000	X	0%	=	\$0	\$455,000	X	0%	=	\$0
Perry Township PD	\$309,900	X	0%	=	\$0	\$170,000	X	0%	=	\$0
Salem PD	\$395,000	X	0%	=	\$0	\$265,000	X	0%	=	\$0
Salineville PD	\$311,900	X	0%	=	\$0	\$250,000	X	0%	=	\$0
St. Clair Township PD	\$295,000	X	0%	=	\$0	\$175,000	X	0%	=	\$0
Washingtonville PD	\$235,000	X	0%	=	\$0	\$145,000	X	0%	=	\$0
Wellsville PD	\$518,100	X	0%	=	\$0	\$325,000	X	0%	=	\$0
Calcutta FD	\$170,000	X	0%	=	\$0	\$645,000	X	0%	=	\$0
Columbiana FD	\$426,700	X	0%	=	\$0	\$890,000	X	0%	=	\$0
East Liverpool FD	\$135,300	X	0%	=	\$0	\$465,000	X	0%	=	\$0



Name/Description of Asset	Structure Loss (Task A1)					Contents Loss (Task A2)				
	Structure Replacement Value (\$)	X	Percent Damage (%)	=	Loss to Structure (\$)	Replacement Value of Contents (\$)	X	Percent Damage (%)	=	Loss to Contents (\$)
East Palestine FD	\$192,300	X	0%	=	\$0	\$385,000	X	0%	=	\$0
Franklin Township VFD	\$95,850	X	0%	=	\$0	\$245,000	X	0%	=	\$0
Hanoverton VFD	\$235,450	X	0%	=	\$0	\$300,000	X	0%	=	\$0
Guilford Lake FD	\$195,000	X	0%	=	\$0	\$345,000	X	0%	=	\$0
Highlandtown VFD	\$104,900	X	0%	=	\$0	\$295,000	X	0%	=	\$0
Homeworth VFD	\$113,900	X	0%	=	\$0	\$310,000	X	0%	=	\$0
Leetonia FD/EMS	\$124,500	X	0%	=	\$0	\$565,000	X	0%	=	\$0
Lisbon FD	\$325,000	X	0%	=	\$0	\$610,000	X	0%	=	\$0
Dixonville FD	\$84,500	X	0%	=	\$0	\$285,000	X	0%	=	\$0
Lacroft VFD	\$149,300	X	0%	=	\$0	\$365,000	X	0%	=	\$0
Negley VFD/EMS	\$110,200	X	0%	=	\$0	\$410,000	X	0%	=	\$0
New Waterford FD	\$150,900	X	0%	=	\$0	\$425,000	X	0%	=	\$0
North Georgetown VFD	\$100,100	X	0%	=	\$0	\$315,000	X	0%	=	\$0
Perry Township VFD	\$309,900	X	0%	=	\$0	\$565,000	X	0%	=	\$0
Rogers Village FD	\$161,000	X	0%	=	\$0	\$435,650	X	0%	=	\$0
Salem FD	\$215,500	X	0%	=	\$0	\$565,000	X	0%	=	\$0
Salineville VFD	\$311,900	X	0%	=	\$0	\$325,000	X	0%	=	\$0
Wellsville VFD	\$143,600	X	0%	=	\$0	\$415,000	X	0%	=	\$0
West Point FD	\$200,000	X	0%	=	\$0	\$365,000	X	0%	=	\$0
Winona FD	\$172,500	X	0%	=	\$0	\$375,000	X	0%	=	\$0
Glenmoor VFD	\$752,000	X	0%	=	\$0	\$650,000	X	0%	=	\$0
Air Evac Lifeteam 81	\$86,600	X	0%	=	\$0	\$0	X	0%	=	\$0
EMT Ambulance	\$112,200	X	0%	=	\$0	\$240,000	X	0%	=	\$0
Lifeteam EMS Inc.	\$135,000	X	0%	=	\$0	\$220,000	X	0%	=	\$0
KLG Ambulance / MICU	\$76,500	X	0%	=	\$0	\$182,000	X	0%	=	\$0
North Star Critical Care	\$84,900	X	0%	=	\$0	\$175,000	X	0%	=	\$0
Maple-Cotton Funeral Home and EMS	\$165,000	X	0%	=	\$0	\$200,000	X	0%	=	\$0
Tri-County Ambulance	\$118,600	X	0%	=	\$0	\$190,000	X	0%	=	\$0
Columbiana EMS	\$426,800	X	0%	=	\$0	\$350,000	X	0%	=	\$0
Leetonia EMS	\$185,000	X	0%	=	\$0	\$265,000	X	0%	=	\$0
New Waterford EMS	\$175,000	X	0%	=	\$0	\$215,000	X	0%	=	\$0
East Palestine EMS	\$265,000	X	0%	=	\$0	\$300,000	X	0%	=	\$0
East Liverpool City Hospital	\$16,750,000	X	0%	=	\$0	\$8,000,000	X	0%	=	\$0
Salem Community Hospital	\$17,250,000	X	0%	=	\$0	\$8,350,000	X	0%	=	\$0

Name/Description of Asset	Structure Loss (Task A1)					Contents Loss (Task A2)				
	Structure Replacement Value (\$)	X	Percent Damage (%)	=	Loss to Structure (\$)	Replacement Value of Contents (\$)	X	Percent Damage (%)	=	Loss to Contents (\$)
Parkside Healthcare Center	\$2,172,700	X	0%	=	\$0	\$410,000	X	0%	=	\$0
Vista Center	\$3,536,000	X	0%	=	\$0	\$475,000	X	0%	=	\$0
Blossom Nursing and Rehab. Center	\$1,650,000	X	0%	=	\$0	\$215,000	X	0%	=	\$0
Calcutta Healthcare Center	\$4,947,200	X	0%	=	\$0	\$500,000	X	0%	=	\$0
East Liverpool Convalescent Center	\$539,600	X	0%	=	\$0	\$275,000	X	0%	=	\$0
Nentwick Convalescent Home	\$2,109,100	X	0%	=	\$0	\$315,000	X	0%	=	\$0
Essex of Salem #1	\$1,768,800	X	0%	=	\$0	\$500,000	X	0%	=	\$0
Essex of Salem #2	\$1,882,800	X	0%	=	\$0	\$465,000	X	0%	=	\$0
Essex of Salem #3	\$1,569,900	X	0%	=	\$0	\$395,000	X	0%	=	\$0
Pleasant view North Retirement	\$1,243,300	X	0%	=	\$0	\$380,000	X	0%	=	\$0
Salem Care Center	\$1,443,900	X	0%	=	\$0	\$350,000	X	0%	=	\$0
Assisted Living Ministry Services	\$212,800	X	0%	=	\$0	\$185,000	X	0%	=	\$0
Crossroads at Beaver Creek	\$3,450,000	X	0%	=	\$0	\$550,000	X	0%	=	\$0
Grace Woods Senior Living	\$897,300	X	0%	=	\$0	\$365,000	X	0%	=	\$0
The Renaissance at Vista	\$3,536,000	X	0%	=	\$0	\$465,000	X	0%	=	\$0
Sterling House of Salem	\$325,000	X	0%	=	\$0	\$350,000	X	0%	=	\$0
Whispering Pines Village	\$415,000	X	0%	=	\$0	\$300,000	X	0%	=	\$0
St. Mary's Alzheimer's Center	\$650,000	X	0%	=	\$0	\$495,000	X	0%	=	\$0
Adkins Nursing Home	\$315,000	X	0%	=	\$0	\$256,000	X	0%	=	\$0
Great Trail Care Center	\$225,000	X	0%	=	\$0	\$195,000	X	0%	=	\$0
Holander House	\$200,000	X	0%	=	\$0	\$165,000	X	0%	=	\$0
Twin Oaks Retirement Center	\$600,000	X	0%	=	\$0	\$435,000	X	0%	=	\$0
Covington Skilled Nursing & Rehab Ctr.	\$795,000	X	0%	=	\$0	\$495,000	X	0%	=	\$0
American Health Care	\$435,000	X	0%	=	\$0	\$400,000	X	0%	=	\$0
Harmony Village	\$275,500	X	0%	=	\$0	\$165,000	X	0%	=	\$0
Courtyard at Lexington	\$595,000	X	0%	=	\$0	\$285,000	X	0%	=	\$0

Name/Description of Asset	Structure Loss (Task A1)					Contents Loss (Task A2)				
	Structure Replacement Value (\$)	X	Percent Damage (%)	=	Loss to Structure (\$)	Replacement Value of Contents (\$)	X	Percent Damage (%)	=	Loss to Contents (\$)
Century House of Salem	\$275,000	X	0%	=	\$0	\$250,000	X	0%	=	\$0
Columbiana County Mental Health	\$560,000	X	0%	=	\$0	\$325,000	X	0%	=	\$0
Beaver Local HS	\$4,756,100	X	0%	=	\$0	\$295,000	X	0%	=	\$0
Beaver Local MS	\$2,866,200	X	0%	=	\$0	\$255,000	X	0%	=	\$0
Buckeye ES	\$1,914,500	X	0%	=	\$0	\$195,000	X	0%	=	\$0
Calcutta ES	\$1,624,700	X	0%	=	\$0	\$165,000	X	0%	=	\$0
Columbiana Co. Career and Technical Ctr.	\$6,888,400	X	0%	=	\$0	\$1,250,000	X	0%	=	\$0
Columbiana HS	\$5,657,000	X	0%	=	\$0	\$355,000	X	0%	=	\$0
Crestview ES	\$200,000	X	0%	=	\$0	\$185,000	X	0%	=	\$0
Crestview MS/HS	\$12,341,800	X	0%	=	\$0	\$650,000	X	0%	=	\$0
David Anderson Jr/Sr HS	\$4,015,300	X	0%	=	\$0	\$565,000	X	0%	=	\$0
DAW MS	\$2,232,400	X	0%	=	\$0	\$245,000	X	0%	=	\$0
East ES	\$1,455,000	X	0%	=	\$0	\$195,000	X	0%	=	\$0
East Liverpool Jr./Sr. HS	\$12,683,000	X	0%	=	\$0	\$365,000	X	0%	=	\$0
East Palestine ES	\$1,365,000	X	0%	=	\$0	\$225,000	X	0%	=	\$0
East Palestine MS	\$3,450,000	X	0%	=	\$0	\$285,000	X	0%	=	\$0
East Palestine HS	\$5,000,000	X	0%	=	\$0	\$400,000	X	0%	=	\$0
Garfield ES	\$1,383,000	X	0%	=	\$0	\$225,000	X	0%	=	\$0
Joshua Dixon ES	\$1,622,900	X	0%	=	\$0	\$265,000	X	0%	=	\$0
Lacroft ES	\$4,765,600	X	0%	=	\$0	\$300,000	X	0%	=	\$0
Leetonia K-12	\$3,650,000	X	0%	=	\$0	\$415,000	X	0%	=	\$0
Mckinley ES	\$2,000,000	X	0%	=	\$0	\$150,000	X	0%	=	\$0
North ES	\$2,155,000	X	0%	=	\$0	\$165,000	X	0%	=	\$0
Reilly ES	\$2,566,500	X	0%	=	\$0	\$180,000	X	0%	=	\$0
Rogers ES	\$1,714,100	X	0%	=	\$0	\$155,000	X	0%	=	\$0
Salem Jr./Sr. HS	\$8,977,100	X	0%	=	\$0	\$455,000	X	0%	=	\$0
South Side MS	\$4,000,000	X	0%	=	\$0	\$235,000	X	0%	=	\$0
Southeast ES	\$2,975,700	X	0%	=	\$0	\$195,000	X	0%	=	\$0
Southern Local K-12	\$4,650,000	X	0%	=	\$0	\$300,000	X	0%	=	\$0
United K-12	\$9,694,000	X	0%	=	\$0	\$495,000	X	0%	=	\$0
Wellsville HS	\$7,347,800	X	0%	=	\$0	\$325,000	X	0%	=	\$0
West Point ES	\$614,200	X	0%	=	\$0	\$140,000	X	0%	=	\$0
Westgate MS	\$3,695,300	X	0%	=	\$0	\$280,000	X	0%	=	\$0
Act 1 Education Ctr. Jr. HS	\$900,100	X	0%	=	\$0	\$165,000	X	0%	=	\$0

Name/Description of Asset	Structure Loss (Task A1)					Contents Loss (Task A2)				
	Structure Replacement Value (\$)	X	Percent Damage (%)	=	Loss to Structure (\$)	Replacement Value of Contents (\$)	X	Percent Damage (%)	=	Loss to Contents (\$)
American Spirit Academy K-12	\$469,700	X	0%	=	\$0	\$180,000	X	0%	=	\$0
Heartland Christian School K-12	\$4,950,000	X	0%	=	\$0	\$545,000	X	0%	=	\$0
St. Aloysius ES	\$275,000	X	0%	=	\$0	\$200,000	X	0%	=	\$0
St. Paul ES	\$3,000,000	X	0%	=	\$0	\$155,000	X	0%	=	\$0
American Standards Brands	\$985,000	X	0%	=	\$0	\$425,000	X	0%	=	\$0
Flex-N-Gate/Ventra Salem	\$1,795,000	X	0%	=	\$0	\$500,000	X	0%	=	\$0
Fresh Mark Inc.	\$895,000	X	0%	=	\$0	\$350,000	X	0%	=	\$0
Wal-Mart Stores Inc.	\$6,985,000	X	0%	=	\$0	\$1,650,000	X	0%	=	\$0
Pioneer Pottery Inc	\$550,000	X	0%	=	\$0	\$110,000	X	0%	=	\$0
Zarbana Industries	\$455,000	X	0%	=	\$0	\$450,000	X	0%	=	\$0
Miller Casting	\$750,000	X	0%	=	\$0	\$650,000	X	0%	=	\$0
Columbiana Foundry Company	\$400,000	X	0%	=	\$0	\$375,000	X	0%	=	\$0
Kensington PO	\$315,000	X	0%	=	\$0	\$80,000	X	0%	=	\$0
Summitville PO	\$215,000	X	0%	=	\$0	\$56,000	X	0%	=	\$0
Columbiana PO	\$500,000	X	0%	=	\$0	\$175,000	X	0%	=	\$0
New Waterford PO	\$225,000	X	0%	=	\$0	\$65,000	X	0%	=	\$0
Calcutta PO	\$175,000	X	0%	=	\$0	\$60,000	X	0%	=	\$0
Winona PO	\$200,000	X	0%	=	\$0	\$70,000	X	0%	=	\$0
Homeworth PO	\$150,000	X	0%	=	\$0	\$55,000	X	0%	=	\$0
East Liverpool PO	\$436,400	X	0%	=	\$0	\$155,000	X	0%	=	\$0
East Palestine PO	\$244,500	X	0%	=	\$0	\$75,000	X	0%	=	\$0
East Rochester PO	\$230,000	X	0%	=	\$0	\$85,000	X	0%	=	\$0
Hanoverton PO	\$300,000	X	0%	=	\$0	\$80,000	X	0%	=	\$0
Rogers PO	\$325,000	X	0%	=	\$0	\$75,000	X	0%	=	\$0
Salem PO	\$596,600	X	0%	=	\$0	\$195,000	X	0%	=	\$0
Salineville PO	\$315,000	X	0%	=	\$0	\$65,000	X	0%	=	\$0
Negley PO	\$295,000	X	0%	=	\$0	\$85,000	X	0%	=	\$0
North Georgetown PO	\$250,000	X	0%	=	\$0	\$60,000	X	0%	=	\$0
Leetonia PO	\$134,800	X	0%	=	\$0	\$62,500	X	0%	=	\$0
Lisbon PO	\$614,300	X	0%	=	\$0	\$250,000	X	0%	=	\$0
Elkton PO	\$210,000	X	0%	=	\$0	\$69,500	X	0%	=	\$0
Washingtonville PO	\$265,000	X	0%	=	\$0	\$80,000	X	0%	=	\$0

Name/Description of Asset	Structure Loss (Task A1)					Contents Loss (Task A2)				
	Structure Replacement Value (\$)	X	Percent Damage (%)	=	Loss to Structure (\$)	Replacement Value of Contents (\$)	X	Percent Damage (%)	=	Loss to Contents (\$)
Wellsville PO	\$145,600	X	0%	=	\$0	\$67,500	X	0%	=	\$0
Carnegie Public Library	\$442,600	X	0%	=	\$0	\$250,000	X	0%	=	\$0
Columbiana Public Library	\$1,312,500	X	0%	=	\$0	\$355,000	X	0%	=	\$0
East Palestine Memorial Public Library	\$826,600	X	0%	=	\$0	\$315,000	X	0%	=	\$0
Leetonia Community Public Library	\$2,122,600	X	0%	=	\$0	\$550,000	X	0%	=	\$0
Lepper Library	\$580,000	X	0%	=	\$0	\$275,000	X	0%	=	\$0
Salem Public Library	\$1,184,400	X	0%	=	\$0	\$400,000	X	0%	=	\$0
Wellsville Public Library	\$367,900	X	0%	=	\$0	\$220,000	X	0%	=	\$0
Hiram Bell Farmstead	\$165,000	X	0%	=	\$0	\$0	X	0%	=	\$0
Burchfield Homestead	\$125,000	X	0%	=	\$0	\$50,000	X	0%	=	\$0
Richard L Cawood Residence	\$95,000	X	0%	=	\$0	\$45,000	X	0%	=	\$0
Cherry Valley Coke Ovens	\$85,000	X	0%	=	\$0	\$0	X	0%	=	\$0
Church Hill Road Covered Bridge	\$450,000	X	0%	=	\$0	\$0	X	0%	=	\$0
Diamond Historic District	\$3,000,000	X	0%	=	\$0	\$0	X	0%	=	\$0
East Liverpool Historic District	\$2,000,000	X	0%	=	\$0	\$0	X	0%	=	\$0
East Liverpool Pottery	\$215,000	X	0%	=	\$0	\$200,000	X	0%	=	\$0
Nicholas Eckis House	\$150,000	X	0%	=	\$0	\$65,000	X	0%	=	\$0
Elks Club	\$135,000	X	0%	=	\$0	\$35,000	X	0%	=	\$0
Sandy and Beaver Canal District	\$675,000	X	0%	=	\$0	\$0	X	0%	=	\$0
Godwin Knowles House	\$185,000	X	0%	=	\$0	\$80,000	X	0%	=	\$0
Hanna-Kenty House	\$140,000	X	0%	=	\$0	\$70,000	X	0%	=	\$0
Hanoverton Canal Town District	\$1,750,000	X	0%	=	\$0	\$0	X	0%	=	\$0
Franklin Harris Farmstead	\$200,000	X	0%	=	\$0	\$65,000	X	0%	=	\$0
Daniel Howell Hise House	\$95,000	X	0%	=	\$0	\$45,000	X	0%	=	\$0
Hostetter Inn	\$465,000	X	0%	=	\$0	\$140,000	X	0%	=	\$0
Ikirt House	\$85,000	X	0%	=	\$0	\$35,000	X	0%	=	\$0
Homer Laughlin House	\$110,000	X	0%	=	\$0	\$40,000	X	0%	=	\$0

	Structure Loss (Task A1)					Contents Loss (Task A2)					
Name/Description of Asset	Structure Replacement Value (\$)	X	Percent Damage (%)	=	Loss to Structure (\$)	Replacement Value of Contents (\$)	X	Percent Damage (%)	=	Loss to Contents (\$)	
Lisbon Historic District	\$4,000,000	X	0%	=	\$0	\$0	X	0%	=	\$0	
Daniel McBean Farmstead	\$225,000	X	0%	=	\$0	\$80,000	X	0%	=	\$0	
Odd Fellows Temple	\$115,000	X	0%	=	\$0	\$65,000	X	0%	=	\$0	
Mary A. Patterson Memorial	\$60,000	X	0%	=	\$0	\$0	X	0%	=	\$0	
Potters National Bank	\$270,000	X	0%	=	\$0	\$110,000	X	0%	=	\$0	
Salem Downtown Historic District	\$3,250,000	X	0%	=	\$0	\$0	X	0%	=	\$0	
Charles Nelson Schmick House	\$90,000	X	0%	=	\$0	\$60,000	X	0%	=	\$0	
John Street House	\$85,000	X	0%	=	\$0	\$45,000	X	0%	=	\$0	
Teegarden-Centennial Covered Bridge	\$475,000	X	0%	=	\$0	\$0	X	0%	=	\$0	
Cassius Clark Thompson House	\$120,000	X	0%	=	\$0	\$65,250	X	0%	=	\$0	
Travelers Hotel	\$850,000	X	0%	=	\$0	\$250,000	X	0%	=	\$0	
YMCA	\$465,000	X	0%	=	\$0	\$125,000	X	0%	=	\$0	
Residential	\$3,767,040,000	X	0%	=	\$0	\$1,883,520,000	X	0%	=	\$0	
Total Loss to Structure					\$0	Total Loss to Contents					\$0

## Hazard: Extreme Heat

Name/Description of Asset	Structure Use and Function Loss (Task A3)									Structure + Contents + Function Loss
	Average Daily Operating Budget (\$)	X	Functional Downtime (# of days)	+	Displacement Cost per Day (\$)	X	Displacement Time (Days)	=	Structure Use & Function Loss (\$)	
Columbiana County Courthouse	\$550,000	X	0	+	\$5,000	X	0	=	\$0	\$0
Columbiana City Hall	\$275,000	X	0	+	\$4,200	X	0	=	\$0	\$0
East Liverpool City Hall	\$250,000	X	0	+	\$3,250	X	0	=	\$0	\$0
East Palestine Village Offices	\$220,000	X	0	+	\$3,000	X	0	=	\$0	\$0
Hanoverton Village Offices	\$155,000	X	0	+	\$2,100	X	0	=	\$0	\$0
Salem City Hall	\$280,000	X	0	+	\$3,400	X	0	=	\$0	\$0
Salineville Village Offices	\$150,000	X	0	+	\$1,500	X	0	=	\$0	\$0
Wellsville Village Offices	\$165,000	X	0	+	\$1,000	X	0	=	\$0	\$0
Leetonia Village Offices	\$110,000	X	0	+	\$1,000	X	0	=	\$0	\$0
Lisbon Village Offices	\$290,000	X	0	+	\$1,100	X	0	=	\$0	\$0
New Waterford Village Offices	\$100,000	X	0	+	\$1,000	X	0	=	\$0	\$0
Washingtonville Village Offices	\$90,000	X	0	+	\$1,000	X	0	=	\$0	\$0
Elkrun Township Hall	\$95,000	X	0	+	\$1,000	X	0	=	\$0	\$0
Fairfield Township Hall	\$140,000	X	0	+	\$1,000	X	0	=	\$0	\$0
Madison Township Hall	\$125,000	X	0	+	\$1,000	X	0	=	\$0	\$0
Salem Township Hall	\$125,000	X	0	+	\$1,000	X	0	=	\$0	\$0
Bridges	\$0	X	0	+	\$0	X	0	=	\$0	\$0
Highways	\$0	X	0	+	\$0	X	0	=	\$0	\$0
Railroads	\$0	X	0	+	\$0	X	0	=	\$0	\$0
Columbiana County Airport	\$0	X	0	+	\$0	X	0	=	\$0	\$0
Columbiana County Port Authority	\$0	X	0	+	\$0	X	0	=	\$0	\$0
East Liverpool Water Works	\$1,000,000	X	0	+	\$30,000	X	0	=	\$0	\$0
East Palestine Sewer and Water	\$750,000	X	0	+	\$20,000	X	0	=	\$0	\$0
Leetonia Water Board	\$375,000	X	0	+	\$35,000	X	0	=	\$0	\$0
Salem Sewage Plant	\$12,000,000	X	0	+	\$800,000	X	0	=	\$0	\$0
Salineville Water Plant	\$410,000	X	0	+	\$12,000	X	0	=	\$0	\$0

Name/Description of Asset	Structure Use and Function Loss (Task A3)									Structure + Contents + Function Loss
	Average Daily Operating Budget (\$)	X	Functional Downtime (# of days)	+	Displacement Cost per Day (\$)	X	Displacement Time (Days)	=	Structure Use & Function Loss (\$)	
Washingtonville Water and Sewer	\$13,450,000	X	0	+	\$95,000	X	0	=	\$0	\$0
Wellsville Filtration Plant	\$280,000	X	0	+	\$9,000	X	0	=	\$0	\$0
Wellsville Sewage Disposal	\$750,000	X	0	+	\$18,000	X	0	=	\$0	\$0
Buckeye Water District	\$2,350,000	X	0	+	\$40,000	X	0	=	\$0	\$0
Columbiana City Water Works/Sewer Dept.	\$1,675,000	X	0	+	\$35,000	X	0	=	\$0	\$0
Leetonia Sewage Plant	\$6,000,000	X	0	+	\$65,000	X	0	=	\$0	\$0
Lisbon Village Water Dept.	\$3,250,000	X	0	+	\$48,000	X	0	=	\$0	\$0
New Waterford Water / Waste Water Plant	\$3,000,000	X	0	+	\$45,000	X	0	=	\$0	\$0
Salineville Sewer Plant	\$8,650,000	X	0	+	\$75,000	X	0	=	\$0	\$0
Columbiana County Sheriff	\$14,400	X	0	+	\$2,000	X	0	=	\$0	\$0
Columbiana County EMA	\$2,200	X	0	+	\$0	X	0	=	\$0	\$0
Columbiana County 911 Ctr.	\$10,000	X	0	+	\$0	X	0	=	\$0	\$0
Columbiana PD	\$5,500	X	0	+	\$0	X	0	=	\$0	\$0
East Liverpool PD	\$3,000	X	0	+	\$0	X	0	=	\$0	\$0
East Palestine PD	\$2,600	X	0	+	\$0	X	0	=	\$0	\$0
Leetonia PD	\$7,000	X	0	+	\$0	X	0	=	\$0	\$0
Lisbon PD	\$6,000	X	0	+	\$0	X	0	=	\$0	\$0
Liverpool Township PD	\$3,200	X	0	+	\$0	X	0	=	\$0	\$0
New Waterford PD	\$4,000	X	0	+	\$0	X	0	=	\$0	\$0
Ohio State Highway Patrol	\$80,000	X	0	+	\$0	X	0	=	\$0	\$0
Perry Township PD	\$2,500	X	0	+	\$0	X	0	=	\$0	\$0
Salem PD	\$8,000	X	0	+	\$0	X	0	=	\$0	\$0
Salineville PD	\$9,000	X	0	+	\$0	X	0	=	\$0	\$0
St. Clair Township PD	\$5,500	X	0	+	\$0	X	0	=	\$0	\$0
Washingtonville PD	\$3,500	X	0	+	\$0	X	0	=	\$0	\$0
Wellsville PD	\$10,000	X	0	+	\$0	X	0	=	\$0	\$0
Calcutta FD	\$4,800	X	0	+	\$0	X	0	=	\$0	\$0
Columbiana FD	\$6,000	X	0	+	\$0	X	0	=	\$0	\$0
East Liverpool FD	\$4,200	X	0	+	\$0	X	0	=	\$0	\$0



Name/Description of Asset	Structure Use and Function Loss (Task A3)									Structure + Contents + Function Loss
	Average Daily Operating Budget (\$)	X	Functional Downtime (# of days)	+	Displacement Cost per Day (\$)	X	Displacement Time (Days)	=	Structure Use & Function Loss (\$)	
East Palestine FD	\$3,800	X	0	+	\$0	X	0	=	\$0	\$0
Franklin Township VFD	\$3,000	X	0	+	\$0	X	0	=	\$0	\$0
Hanoverton VFD	\$4,500	X	0	+	\$0	X	0	=	\$0	\$0
Guilford Lake FD	\$6,000	X	0	+	\$0	X	0	=	\$0	\$0
Highlandtown VFD	\$4,800	X	0	+	\$0	X	0	=	\$0	\$0
Homeworth VFD	\$5,000	X	0	+	\$0	X	0	=	\$0	\$0
Leetonia FD/EMS	\$7,000	X	0	+	\$0	X	0	=	\$0	\$0
Lisbon FD	\$10,000	X	0	+	\$0	X	0	=	\$0	\$0
Dixonville FD	\$3,500	X	0	+	\$0	X	0	=	\$0	\$0
Lacroft VFD	\$4,500	X	0	+	\$0	X	0	=	\$0	\$0
Negley VFD/EMS	\$3,900	X	0	+	\$0	X	0	=	\$0	\$0
New Waterford FD	\$4,600	X	0	+	\$0	X	0	=	\$0	\$0
North Georgetown VFD	\$5,550	X	0	+	\$0	X	0	=	\$0	\$0
Perry Township VFD	\$8,000	X	0	+	\$0	X	0	=	\$0	\$0
Rogers Village FD	\$6,500	X	0	+	\$0	X	0	=	\$0	\$0
Salem FD	\$10,000	X	0	+	\$0	X	0	=	\$0	\$0
Salineville VFD	\$5,100	X	0	+	\$0	X	0	=	\$0	\$0
Wellsville VFD	\$4,600	X	0	+	\$0	X	0	=	\$0	\$0
West Point FD	\$4,800	X	0	+	\$0	X	0	=	\$0	\$0
Winona FD	\$5,000	X	0	+	\$0	X	0	=	\$0	\$0
Glenmoor VFD	\$12,000	X	0	+	\$0	X	0	=	\$0	\$0
Air Evac Lifeteam 81	\$100,000	X	0	+	\$0	X	0	=	\$0	\$0
EMT Ambulance	\$6,500	X	0	+	\$0	X	0	=	\$0	\$0
Lifeteam EMS Inc.	\$7,000	X	0	+	\$0	X	0	=	\$0	\$0
KLG Ambulance / MICU	\$5,800	X	0	+	\$0	X	0	=	\$0	\$0
North Star Critical Care	\$4,000	X	0	+	\$0	X	0	=	\$0	\$0
Maple-Cotton Funeral Home and EMS	\$3,200	X	0	+	\$0	X	0	=	\$0	\$0
Tri-County Ambulance	\$3,500	X	0	+	\$0	X	0	=	\$0	\$0
Columbiana EMS	\$8,000	X	0	+	\$0	X	0	=	\$0	\$0
Leetonia EMS	\$4,300	X	0	+	\$0	X	0	=	\$0	\$0
New Waterford EMS	\$4,000	X	0	+	\$0	X	0	=	\$0	\$0
East Palestine EMS	\$6,000	X	0	+	\$0	X	0	=	\$0	\$0
East Liverpool City Hospital	\$750,000	X	0	+	\$104,000	X	0	=	\$0	\$0
Salem Community Hospital	\$800,000	X	0	+	\$120,000	X	0	=	\$0	\$0

Name/Description of Asset	Structure Use and Function Loss (Task A3)									Structure + Contents + Function Loss
	Average Daily Operating Budget (\$)	X	Functional Downtime (# of days)	+	Displacement Cost per Day (\$)	X	Displacement Time (Days)	=	Structure Use & Function Loss (\$)	
Parkside Healthcare Center	\$300,000	X	0	+	\$30,000	X	0	=	\$0	\$0
Vista Center	\$350,000	X	0	+	\$35,000	X	0	=	\$0	\$0
Blossom Nursing and Rehab. Center	\$300,000	X	0.25	+	\$30,000	X	0	=	\$75,000	\$75,000
Calcutta Healthcare Center	\$375,000	X	0	+	\$40,000	X	0	=	\$0	\$0
East Liverpool Convalescent Center	\$300,000	X	0	+	\$30,000	X	0	=	\$0	\$0
Nentwick Convalescent Home	\$425,000	X	0	+	\$36,000	X	0	=	\$0	\$0
Essex of Salem #1	\$450,000	X	0	+	\$40,000	X	0	=	\$0	\$0
Essex of Salem #2	\$425,000	X	0	+	\$37,000	X	0	=	\$0	\$0
Essex of Salem #3	\$375,000	X	0	+	\$31,000	X	0	=	\$0	\$0
Pleasant view North Retirement	\$415,000	X	0	+	\$33,000	X	0	=	\$0	\$0
Salem Care Center	\$400,000	X	0.25	+	\$37,500	X	0	=	\$100,000	\$100,000
Assisted Living Ministry Services	\$365,000	X	0.25	+	\$34,000	X	0	=	\$91,250	\$91,250
Crossroads at Beaver Creek	\$650,000	X	0	+	\$43,000	X	0	=	\$0	\$0
Grace Woods Senior Living	\$425,000	X	0	+	\$39,500	X	0	=	\$0	\$0
The Renaissance at Vista	\$500,000	X	0	+	\$42,000	X	0	=	\$0	\$0
Sterling House of Salem	\$435,000	X	0	+	\$40,000	X	0	=	\$0	\$0
Whispering Pines Village	\$395,000	X	0.25	+	\$35,000	X	0	=	\$98,750	\$98,750
St. Mary's Alzheimer's Center	\$465,000	X	0	+	\$42,000	X	0	=	\$0	\$0
Adkins Nursing Home	\$400,000	X	0.25	+	\$35,000	X	0	=	\$100,000	\$100,000
Great Trail Care Center	\$365,000	X	0	+	\$30,000	X	0	=	\$0	\$0
Holander House	\$370,000	X	0	+	\$31,000	X	0	=	\$0	\$0
Twin Oaks Retirement Center	\$550,000	X	0	+	\$42,500	X	0	=	\$0	\$0
Covington Skilled Nursing & Rehab Ctr.	\$565,000	X	0	+	\$43,000	X	0	=	\$0	\$0
American Health Care	\$415,000	X	0	+	\$33,000	X	0	=	\$0	\$0
Harmony Village	\$485,000	X	0.25	+	\$36,000	X	0	=	\$121,250	\$121,250

Name/Description of Asset	Structure Use and Function Loss (Task A3)									Structure + Contents + Function Loss
	Average Daily Operating Budget (\$)	X	Functional Downtime (# of days)	+	Displacement Cost per Day (\$)	X	Displacement Time (Days)	=	Structure Use & Function Loss (\$)	
Courtyard at Lexington	\$585,000	X	0.25	+	\$43,500	X	0	=	\$146,250	\$146,250
Century House of Salem	\$480,000	X	0	+	\$35,500	X	0	=	\$0	\$0
Columbiana County Mental Health	\$400,000	X	0	+	\$31,000	X	0	=	\$0	\$0
Beaver Local HS	\$43,000	X	0	+	\$0	X	0	=	\$0	\$0
Beaver Local MS	\$32,000	X	0	+	\$0	X	0	=	\$0	\$0
Buckeye ES	\$25,000	X	0	+	\$0	X	0	=	\$0	\$0
Calcutta ES	\$22,500	X	0	+	\$0	X	0	=	\$0	\$0
Columbiana Co. Career and Technical Ctr.	\$280,000	X	0	+	\$0	X	0	=	\$0	\$0
Columbiana HS	\$40,000	X	0	+	\$0	X	0	=	\$0	\$0
Crestview ES	\$25,000	X	0	+	\$0	X	0	=	\$0	\$0
Crestview MS/HS	\$75,000	X	0	+	\$0	X	0	=	\$0	\$0
David Anderson Jr/Sr HS	\$54,000	X	0	+	\$0	X	0	=	\$0	\$0
DAW MS	\$33,000	X	0	+	\$0	X	0	=	\$0	\$0
East ES	\$26,500	X	0	+	\$0	X	0	=	\$0	\$0
East Liverpool Jr./Sr. HS	\$38,000	X	0	+	\$0	X	0	=	\$0	\$0
East Palestine ES	\$23,000	X	0	+	\$0	X	0	=	\$0	\$0
East Palestine MS	\$35,000	X	0	+	\$0	X	0	=	\$0	\$0
East Palestine HS	\$40,000	X	0	+	\$0	X	0	=	\$0	\$0
Garfield ES	\$22,500	X	0	+	\$0	X	0	=	\$0	\$0
Joshua Dixon ES	\$26,000	X	0	+	\$0	X	0	=	\$0	\$0
Lacroft ES	\$35,000	X	0	+	\$0	X	0	=	\$0	\$0
Leetonia K-12	\$39,500	X	0	+	\$0	X	0	=	\$0	\$0
Mckinley ES	\$25,000	X	0	+	\$0	X	0	=	\$0	\$0
North ES	\$28,500	X	0	+	\$0	X	0	=	\$0	\$0
Reilly ES	\$30,000	X	0	+	\$0	X	0	=	\$0	\$0
Rogers ES	\$26,500	X	0	+	\$0	X	0	=	\$0	\$0
Salem Jr./Sr. HS	\$60,000	X	0	+	\$0	X	0	=	\$0	\$0
South Side MS	\$33,000	X	0	+	\$0	X	0	=	\$0	\$0
Southeast ES	\$23,500	X	0	+	\$0	X	0	=	\$0	\$0
Southern Local K-12	\$48,500	X	0	+	\$0	X	0	=	\$0	\$0
United K-12	\$70,000	X	0	+	\$0	X	0	=	\$0	\$0
Wellsville HS	\$65,000	X	0	+	\$0	X	0	=	\$0	\$0
West Point ES	\$31,000	X	0	+	\$0	X	0	=	\$0	\$0
Westgate MS	\$38,000	X	0	+	\$0	X	0	=	\$0	\$0

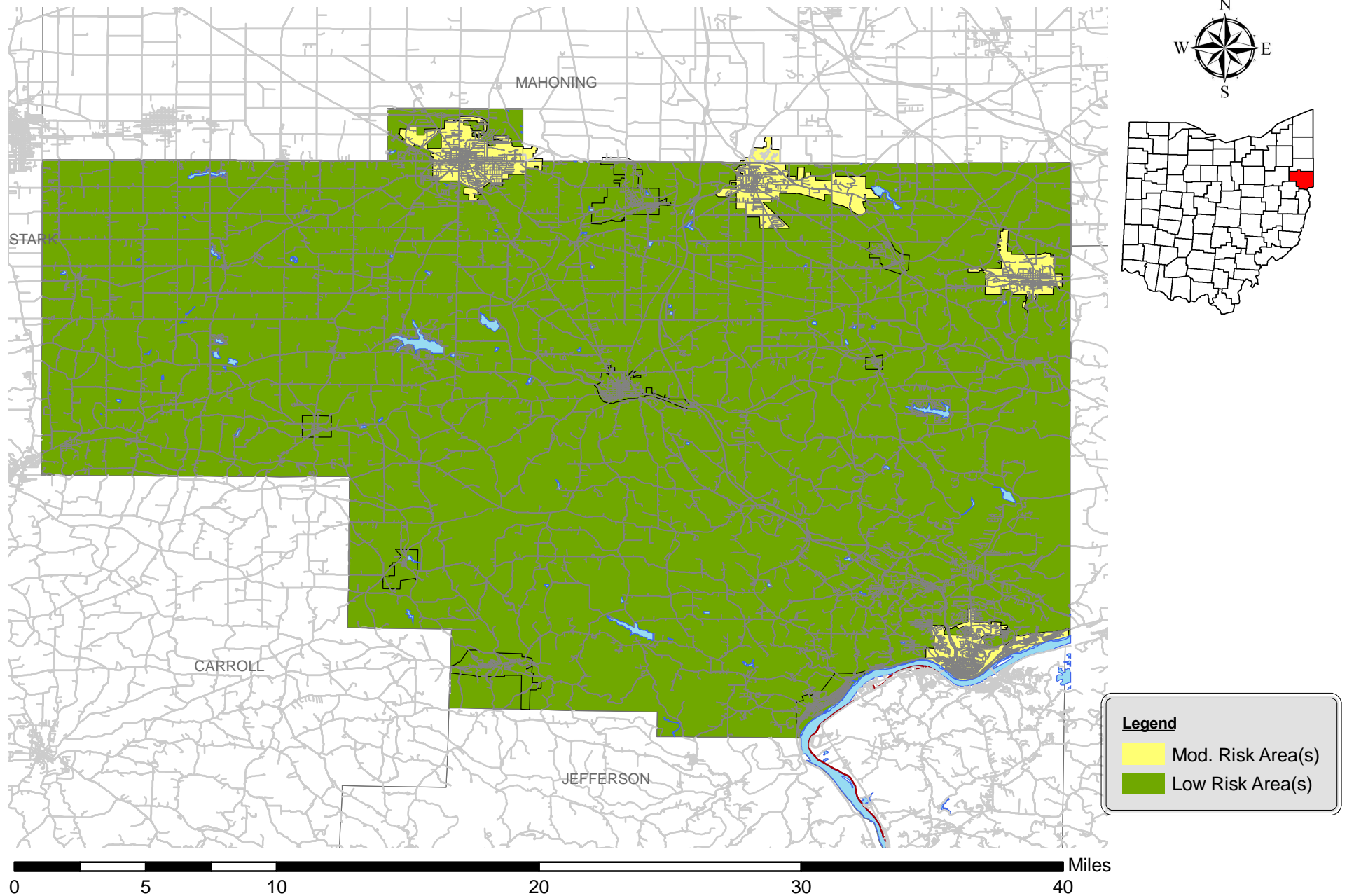
Name/Description of Asset	Structure Use and Function Loss (Task A3)									Structure + Contents + Function Loss
	Average Daily Operating Budget (\$)	X	Functional Downtime (# of days)	+	Displacement Cost per Day (\$)	X	Displacement Time (Days)	=	Structure Use & Function Loss (\$)	
Act 1 Education Ctr. Jr. HS	\$22,000	X	0	+	\$0	X	0	=	\$0	\$0
American Spirit Academy K-12	\$20,000	X	0	+	\$0	X	0	=	\$0	\$0
Heartland Christian School K-12	\$48,500	X	0	+	\$0	X	0	=	\$0	\$0
St. Aloysius ES	\$29,500	X	0	+	\$0	X	0	=	\$0	\$0
St. Paul ES	\$32,500	X	0	+	\$0	X	0	=	\$0	\$0
American Standards Brands	\$44,800	X	0	+	\$11,200	X	0	=	\$0	\$0
Flex-N-Gate/Ventra Salem	\$38,000	X	0	+	\$9,500	X	0	=	\$0	\$0
Fresh Mark Inc.	\$35,000	X	0	+	\$8,000	X	0	=	\$0	\$0
Wal-Mart Stores Inc.	\$109,600	X	0	+	\$27,400	X	0	=	\$0	\$0
Pioneer Pottery Inc	\$30,000	X	0	+	\$7,000	X	0	=	\$0	\$0
Zarbara Industries	\$50,000	X	0	+	\$13,500	X	0	=	\$0	\$0
Miller Casting	\$65,000	X	0	+	\$14,000	X	0	=	\$0	\$0
Columbiana Foundry Company	\$40,000	X	0	+	\$10,000	X	0	=	\$0	\$0
Kensington PO	\$1,800	X	0	+	\$0	X	0	=	\$0	\$0
Summitville PO	\$2,100	X	0	+	\$0	X	0	=	\$0	\$0
Columbiana PO	\$4,800	X	0	+	\$0	X	0	=	\$0	\$0
New Waterford PO	\$3,600	X	0	+	\$0	X	0	=	\$0	\$0
Calcutta PO	\$3,000	X	0	+	\$0	X	0	=	\$0	\$0
Winona PO	\$3,250	X	0	+	\$0	X	0	=	\$0	\$0
Homeworth PO	\$2,850	X	0	+	\$0	X	0	=	\$0	\$0
East Liverpool PO	\$5,000	X	0	+	\$0	X	0	=	\$0	\$0
East Palestine PO	\$3,450	X	0	+	\$0	X	0	=	\$0	\$0
East Rochester PO	\$3,650	X	0	+	\$0	X	0	=	\$0	\$0
Hanoverton PO	\$4,000	X	0	+	\$0	X	0	=	\$0	\$0
Rogers PO	\$3,650	X	0	+	\$0	X	0	=	\$0	\$0
Salem PO	\$6,000	X	0	+	\$0	X	0	=	\$0	\$0
Salineville PO	\$3,350	X	0	+	\$0	X	0	=	\$0	\$0
Negley PO	\$4,250	X	0	+	\$0	X	0	=	\$0	\$0
North Georgetown PO	\$3,200	X	0	+	\$0	X	0	=	\$0	\$0
Leetonia PO	\$3,300	X	0	+	\$0	X	0	=	\$0	\$0
Lisbon PO	\$5,650	X	0	+	\$0	X	0	=	\$0	\$0

Name/Description of Asset	Structure Use and Function Loss (Task A3)									Structure + Contents + Function Loss
	Average Daily Operating Budget (\$)	X	Functional Downtime (# of days)	+	Displacement Cost per Day (\$)	X	Displacement Time (Days)	=	Structure Use & Function Loss (\$)	
Elkton PO	\$4,150	X	0	+	\$0	X	0	=	\$0	\$0
Washingtonville PO	\$4,100	X	0	+	\$0	X	0	=	\$0	\$0
Wellsville PO	\$3,450	X	0	+	\$0	X	0	=	\$0	\$0
Carnegie Public Library	\$1,600	X	0	+	\$800	X	0	=	\$0	\$0
Columbiana Public	\$12,000	X	0	+	\$1,250	X	0	=	\$0	\$0
East Palestine Memorial Public Library	\$9,500	X	0	+	\$1,000	X	0	=	\$0	\$0
Leetonia Community Public Library	\$22,000	X	0	+	\$2,000	X	0	=	\$0	\$0
Lepper Library	\$3,840	X	0	+	\$500	X	0	=	\$0	\$0
Salem Public Library	\$13,500	X	0	+	\$1,500	X	0	=	\$0	\$0
Wellsville Public Library	\$1,500	X	0	+	\$750	X	0	=	\$0	\$0
Hiram Bell Farmstead	\$0	X	0	+	\$0	X	0	=	\$0	\$0
Burchfield Homestead	\$0	X	0	+	\$0	X	0	=	\$0	\$0
Richard L Cawood Residence	\$0	X	0	+	\$0	X	0	=	\$0	\$0
Cherry Valley Coke Ovens	\$0	X	0	+	\$0	X	0	=	\$0	\$0
Church Hill Road Covered Bridge	\$0	X	0	+	\$0	X	0	=	\$0	\$0
Diamond Historic District	\$0	X	0	+	\$0	X	0	=	\$0	\$0
East Liverpool Historic District	\$0	X	0	+	\$0	X	0	=	\$0	\$0
East Liverpool Pottery	\$0	X	0	+	\$0	X	0	=	\$0	\$0
Nicholas Eckis House	\$0	X	0	+	\$0	X	0	=	\$0	\$0
Elks Club	\$0	X	0	+	\$0	X	0	=	\$0	\$0
Sandy and Beaver Canal District	\$0	X	0	+	\$0	X	0	=	\$0	\$0
Godwin Knowles House	\$0	X	0	+	\$0	X	0	=	\$0	\$0
Hanna-Kenty House	\$0	X	0	+	\$0	X	0	=	\$0	\$0
Hanoverton Canal Town District	\$0	X	0	+	\$0	X	0	=	\$0	\$0
Franklin Harris Farmstead	\$0	X	0	+	\$0	X	0	=	\$0	\$0
Daniel Howell Hise House	\$0	X	0	+	\$0	X	0	=	\$0	\$0
Hostetter Inn	\$0	X	0	+	\$0	X	0	=	\$0	\$0
Ilkirt House	\$0	X	0	+	\$0	X	0	=	\$0	\$0

Name/Description of Asset	Structure Use and Function Loss (Task A3)								
	Average Daily Operating Budget (\$)	X	Functional Downtime (# of days)	+	Displacement Cost per Day (\$)	X	Displacement Time (Days)	=	Structure Use & Function Loss (\$)
Homer Laughlin House	\$0	X	0	+	\$0	X	0	=	\$0
Lisbon Historic District	\$0	X	0	+	\$0	X	0	=	\$0
Daniel McBean Farmstead	\$0	X	0	+	\$0	X	0	=	\$0
Odd Fellows Temple	\$0	X	0	+	\$0	X	0	=	\$0
Mary A. Patterson Memorial	\$0	X	0	+	\$0	X	0	=	\$0
Potters National Bank	\$0	X	0	+	\$0	X	0	=	\$0
Salem Downtown Historic District	\$0	X	0	+	\$0	X	0	=	\$0
Charles Nelson Schmick House	\$0	X	0	+	\$0	X	0	=	\$0
John Street House	\$0	X	0	+	\$0	X	0	=	\$0
Teegarden-Centennial Covered Bridge	\$0	X	0	+	\$0	X	0	=	\$0
Cassius Clark Thompson House	\$0	X	0	+	\$0	X	0	=	\$0
Travelers Hotel	\$0	X	0	+	\$0	X	0	=	\$0
YMCA	\$0	X	0	+	\$0	X	0	=	\$0
Residential	\$0	X	0	+	\$0	X	0	=	\$0
Total Loss to Structure Use & Function									<b>\$732,500</b>

Structure + Contents + Function Loss
\$0
\$0
\$0
\$0
\$0
\$0
\$0
\$0
\$0
\$0
\$0
\$0
\$0
\$0
\$0
\$732,500

## HAZARD MAPPING: EXTREME HEAT



## APPENDIX 2: CALCULATION METHODOLOGIES

The purpose of this appendix is to provide insight as to the specific calculation methodologies employed throughout the creation of this plan. This information has been moved to an appendix so as not to hinder the readability and usability of the plan sections above. The following calculations are described: Worksheet #3a, municipal designations and calculations in Worksheet #3b, and Worksheet #4. Notes on Worksheet #4 are further divided by hazard.

### Worksheet #3a

The purpose of Worksheet #3a is to give an overview of the numbers of structures and people as well as the potential values of structures within a particular hazard area. In this sense, Worksheet #3a does not represent a “loss estimate”. The percentages were broadly estimated based on the coverage of hazard profile mapping that was denoted as a higher risk. For Worksheet #3a, the estimating process was not quantitative.

Further, risk was a factor of the hazard itself (e.g., on a map with both low and moderate risk areas depicted, a percentage was determined for the moderate risk area only. On a map with only moderate and high areas, the percentage represents “high”. Finally, on maps with low, moderate, *and* high areas, the percentage represents “moderate” plus “high”). In such cases as the “thunderstorm” hazard, where the entire county can be said to be at equal risk, 100 percent (100%) of the values, structures, and people were considered to be in the hazard area.

### Worksheet #3b

Worksheet #3b contains a composite list for the entire county as well as subsets for each participating governmental jurisdiction. Calculations were necessary to obtain accuracy on the jurisdictional subsets. For individual assets (i.e., a single facility), the entire value contained on the composite county list was transferred to the subset corresponding to the jurisdiction in which the facility is located.

Other values, though, were “group” values. These assets included *Bridges*, *Railroads*, *Residential*, and “*Roads*”. The *Residential* figure could be determined based on the number of housing units in each jurisdiction per US Census data. The



jurisdictional number of housing units was multiplied by the median value of a housing unit (again, from the US Census) to arrive at the jurisdictional *Residential* figure.

From there, the percentage of the total *Residential* figure that the jurisdiction comprised was calculated. For instance, if a Jurisdiction X's *Residential* value was \$10,000,000 and the entire county's was \$100,000,000, a percentage of 10% was calculated. The other "group" values (listed on the composite county list) were multiplied by this percentage to estimate individual jurisdictional values. For example, using the percentage calculated above for Jurisdiction X and based on a sample value of \$500,000,000 for *Roads*, the following calculation was performed:

$$\text{Jurisdiction X Roads Value} = \$500,000,000 \times 10\%$$

$$\text{Jurisdiction X Roads Value} = \$5,000,000$$

The same calculation was repeated to determine *Railroad* and *Bridge* values.

#### **Worksheet #4**

The basic methodology used to calculate loss estimates is described in Section 2.4 above. The actual process used to determine damage percentages and displacement days, though, is discussed here.

- *Dam Failure*: Dam failure was considered a "site-specific hazard". As such, if an asset was not deemed vulnerable to the hazard, all percentages and displacement days were set at zero (0). Residential assets were identified in the risk area. As such, the composite residential value for the county was multiplied by 0.05%; the contents value was multiplied by 0.05%. No functional loss was considered for residential assets.
- *Drought*: Structural and contents losses were assumed to be 0% with the exception of pumps and other mechanical content within water treatment facilities. The functional losses were only considered for agricultural assets, and water distribution systems.
- *Earthquake*: Historical records show that earthquake damage is usually light because of the relatively small magnitude of earthquakes that occur in the State of Ohio. As such, an estimated (again, based on historical losses) of 0.25 to 0.30% was applied to the content value of all assets.

- *Flooding*: Flooding was also considered a “site-specific hazard”. As such, if an asset was not deemed vulnerable to the hazard, all percentages and displacement days were set at zero (0). For specific facilities in the hazard area, a structural damage percentage of 2-5% was used. For “group” assets (such as *Residential*), an estimated structural percentage of 0.01% was used, based on historical evidence. For specific assets, a half day or 0.5 displacement days were estimated.
- *Hazardous Material Incident*: A hazardous material incident was also considered a “site-specific hazard”. As such, if an asset was not deemed vulnerable to the hazard, all percentages and displacement days were set at zero (0). Structural damage for facilities was estimated at 0%. A quarter of a day or 0.25 displacement days were applied to all assets in the hazard area.
- *Severe Thunderstorm / Hail / Lightning*: A base structural damage percentage of 0.10 to 0.50% was applied to all assets (derived from historical figures). An estimated contents damage percentage of 0% was applied to all assets. It was assumed that thunderstorms and hail would likely result in minimal functional losses, 0.25 displacements days were estimated.
- *Severe Wind & Tornado*: A base structural damage percentage of 0.10 to 0.50% was applied to all assets (derived from historical figures). An estimated contents percentage of 0% was also applied to all assets. A “portion of year” displacement figure of 1 functional losses were estimated.
- *Severe Winter Storm*: A base structural damage percentage of 0.25 to 0.30% was applied to all assets (derived from historical figures). Contents losses were estimated to be minimal and were thus assigned a 0% figure. A “portion of year” displacement figure of 1 to 2 was assigned.
- *Extreme Heat*: All physical losses were set to zero (0) and functional downtime was set at 0.25 days for facilities that house vulnerable populations.

## APPENDIX 3: GLOSSARY

This appendix contains definitions of commonly-used terms throughout the *Columbiana County Multi-Jurisdictional All-Hazards Mitigation Plan*. These terms are considered because they are either unique to the mitigation planning process, or used in a different way in a mitigation context as compared to other emergency preparedness contexts. This appendix also contains a list of the acronyms used throughout this document and their corresponding definitions.

### Definition of Terms

**Asset Inventory:** A listing of critical facilities, historical facilities, facilities housing vulnerable populations (e.g., schools, nursing homes, hospitals), large economic assets in the community, and other, community-designated special considerations on which a risk assessment is completed.

**Benefit Cost Review:** A process by which a community considers both the potential benefits of mitigation projects in comparison with their costs. It is a way to determine if the costs are achievable and feasible based on the benefits that can be realistically anticipated.

**Emergency Services Project:** Action that protects people and property during, and immediately after, a disaster or hazard event.

**Hazard Risk Assessment:** The process of measuring the potential loss of life, personal injury, economic injury, and property damage resulting from hazards by assessing the vulnerability of people, buildings, and infrastructure to hazards.

**Loss Estimate:** A mathematical calculation of the potential damage – structural, contents, and functional – a facility and/or community could occur as a result of a specific hazard.

**Mitigation:** Activities providing a critical foundation in the effort to reduce the loss of life and property from natural and/or man-made disasters, by avoiding or lessening the impact of a disaster, and providing value to the public by creating safer

communities. Mitigation seeks to fix the cycle of disaster damage, reconstruction, and repeated damage. These activities or actions, in most cases, will have a long-term sustained effect.

**Natural Resource Protection:** Action that, in addition to minimizing hazard losses, also preserves or restores the functions of natural systems. These actions include sediment and erosion control, stream corridor restoration, watershed management, forest and vegetation management, and wetland restoration and preservation.

**Prevention:** Government administrative or regulatory actions or processes that influence the way land and buildings are developed and built. These actions also include public activities to reduce hazard losses.

**Property Protection:** Actions that involve the modification of existing buildings or structures to protect them from a hazard, or removal from the hazard area.

**Public Education and Awareness Project:** Action to inform and educate citizens, elected officials, and property owners about the hazards and potential ways to mitigate them.

**Robert T. Stafford Disaster Relief and Emergency Assistance Act:** Section 322 was added as part of the Disaster Mitigation Act (DMA) of 2000 to take a new and revitalized approach to mitigation planning. This new section emphasizes the need for local entities to closely coordinate mitigation planning and implementation efforts. In succinct terms, this is the mandate requiring local communities to compile and adopt a mitigation plan as an eligibility requirement for mitigation funding.

**STAPLEE Method:** A technique for identifying, evaluating, and prioritizing mitigation actions based on existing local conditions. It advocates an analysis based on the following conditions: social, technical, administrative, political, legal, economic, and environmental.

**Structural Project:** Action that involves the construction of structures to reduce the impact of a hazard.

## **Definition of Acronyms**

AP – Action Plan  
ARC – American Red Cross  
CCEMA – Columbiana County Emergency Management Agency  
CDBG – Community Development Block Grant  
CDC – Center for Disease Control & Prevention  
CFR – Code of Federal Regulations  
COOP – Continuity of Operations Plan  
CPC – Core Planning Committee  
CRS – Community Rating System  
DMA – Disaster Mitigation Act  
EAS – Emergency Alert System  
EHS – Extremely Hazardous Substance  
EMA – Emergency Management Agency  
EMPG – Emergency Management Performance Grant  
EMS – Emergency Medical Services  
EOC – Emergency Operations Center  
EOP – Emergency Operations Plan  
EPI – Emergency Public Information  
ESRI – Environmental Systems Research Institute  
FBI – Federal Bureau of Investigation  
FIRM – Flood Insurance Rate Map  
FEMA – Federal Emergency Management Agency  
FMA – Flood Mitigation Assistance  
GIS – Geographic Information System  
HAZMAT – Hazardous Materials  
HAZUS – Hazards US  
HMC – Hazard Mitigation Core Planning Committee  
HMEP – Hazardous Materials Emergency Planning  
HMGP – Hazard Mitigation Grant Program  
HRA – Hazard Risk Assessment  
HSGP – Homeland Security Grant Program  
LEPC – Local Emergency Planning Committee  
MAA – Mutual Aid Agreement

MHI – Median Household Income  
MPH – Miles Per Hour  
MSA – Metropolitan Statistical Area  
NCDC – National Climatic Data Center  
NFIP – National Flood Insurance Program  
NOAA – National Oceanic Atmospheric Administration  
NRCS – Natural Resource Conservation Service  
NWS – National Weather Service  
ODH – Ohio Department of Health  
ODNR – Ohio Department of Natural Resources  
ODOT – Ohio Department of Transportation  
OEIC – Ohio Earthquake Information Center  
OEMA – Ohio Emergency Management Agency  
ORC – Ohio Revised Code  
OSHP – Ohio State Highway Patrol  
PDM – Pre-Disaster Mitigation  
PDSI – Palmer Drought Severity Index  
PGA – Peak Ground Acceleration  
POD – Points of Dispensing  
SERC – State Emergency Response Commission  
SOG – Standard Operating Guidelines  
STAPLEE – Social, Technical, Administrative, Political, Legal, Environmental,  
Economical  
USACOE – United State Army Corps of Engineers  
USDA – United States Department of Agriculture  
USDHS – United States Department of Homeland Security  
USDOT – United States Department of Transportation  
USGS – United States Geological Survey  
VFD – Volunteer Fire Department  
WMD – Weapons of Mass Destruction  
WTP – Water Treatment Plant

## **APPENDIX 4: EVIDENCE OF PUBLIC INVOLVEMENT**

This appendix contains copies of sign-in sheets and advertisements for any meetings held as part of the hazard mitigation planning process. Planning committee meetings were not advertised; consequently, only sign-in sheets are provided for those. All public meetings were advertised.

**COLUMBIANA COUNTY**  
**MULTI-JURISDICTIONAL ALL-HAZARDS MITIGATION PLAN UPDATE**  
**STAKEHOLDERS / PUBLIC MEETING INVITATION**

Date: September 7, 2012

Time: 10:00 AM

Location: Columbiana County Emergency Management Agency Office

As you may be aware the Columbiana County Multi-Jurisdictional All-Hazards Mitigation Plan was adopted by Columbiana County and participating jurisdictions in 2006. The plan is required to be updated at a minimum of every five (5) years, per federal requirements in Section 322 of the Robert T. Stafford Disaster Relief and Emergency Assistance Act, as enacted by Section 104 of the Disaster Mitigation Act of 2000.

The Columbiana County Emergency Management Agency (CCEMA), as part of the Columbiana County Hazard Mitigation Planning Committee, and representatives from JH Consulting LLC, of West Virginia would like to invite you to a Stakeholders/Public meeting on September 7, 2012 at the Columbiana County Emergency Management Agency Office at 215 South Market Street, Lisbon, Ohio, at 10:00am to continue the required plan update process. The primary goal of the meeting is to update the status of mitigation strategies and objectives identified in the original plan, and discuss any mitigation efforts that have been conducted since the original plan was adopted.

The updating process involves reassembling the Planning Stakeholders Committee to guide necessary plan revisions, as well as to provide the public an opportunity to comment, to assure that the plan update remains relevant to Columbiana County's needs. We would like to invite you to join the Columbiana County Hazard Mitigation Planning Committee at this meeting, in an effort to complete preliminary update functions, and keep this process headed in the right direction. We look forward to working with you on this important project. Thank you for your support.

Sincerely,

Edie Dillard  
Interim Director, CCEMA



## **MEETING AGENDA**

Consultant introductions

Review of hazards to be included

Status of existing mitigation strategies

Development of new mitigation strategies

Discussion concerning past mitigation efforts

Timelines

Q & A



# **PUBLIC MEETING NOTICE**

## **Columbiana County Multi-Jurisdictional All-Hazard Mitigation Plan Update Meeting**

**September 7<sup>th</sup>, 2012  
From 10:00am to Noon**

**Located at  
Columbiana County EMA Office  
215 South Market Street  
Lisbon, Ohio 44432  
(330) 424-9725**

# **Public Welcome**

## MEETING FOR MITIGATION PLAN UPDATE

The Columbiana County Hazard Mitigation Core Planning Committee will be conducting a meeting concerning the updating of the Columbiana County Hazard Mitigation Plan.

This plan identifies the hazards to which Columbiana County is susceptible as well as a variety of projects that can be undertaken to lessen the effects of those hazards.

The public is invited to attend the Stakeholders/Public Meeting to be held at the Columbiana County Emergency Operations Center at 215 South Market Street in Lisbon, on September 7<sup>th</sup> at 10:00am.

The Columbiana County Hazard Mitigation Plan was developed in 2006 per federal requirements in Section 322 of the Robert T. Stafford Disaster Relief and Emergency Assistance Act, as enacted by Section 104 of the Disaster Mitigation Act of 2000.

## Evidence of Stakeholders/Public Meeting



# COLUMBIANA COUNTY HAZARD MITIGATION PLAN

Multi-Jurisdictional All-Hazard Mitigation Plan Update – Stakeholders / Public Meeting

September 7, 2012 ~ 10 a.m.

Sign In Sheet

	Name	Agency	Position/Title
1.	Doug Britvec	JH Consulting, LLC	Project Manager
2.	Sean Sharp	JH Consulting LLC	Emergency Planner
3.	Sally Keating	Village, Salineville, OH	Council
4.	Julie Dunlop	ELCH	Emergency Preparedness
5.	Ken Kunst	CITY OF SALEM	SERVICE/SAFETY DIRECTOR
6.	Jeff Hughes	SALEM FIRE	CHIEF
7.	Matt Hoopes	Salem Utilities	Asst Supt.
8.	BOB FLOOR	SALEM POLICE DEPT	CHIEF
9.	Bill Jones	E. Liverpool Fire Dep	Chief
10.	Tim WEIGLE	UNITY TWP	TRUSTEE
11.	Joe Femia	" "	"
12.	Samantha Works	Col. County EMA	Deputy Director
13.	J. GRONER	CITY OF COLUMBIANA	SERVICE DIRECTOR
14.	Bob Zehentbauer	CCGHD	Emergency Planning
15.	Edie Dillard	CCEMA	EMA
16.	Ruby Sacher		
17.	John Payne	C C	Commissioner



# COLUMBIANA COUNTY HAZARD MITIGATION PLAN

*Multi-Jurisdictional All-Hazard Mitigation Plan Update – Stakeholders / Public Meeting*

September 7, 2012 ~ 10 a.m.

Sign In Sheet

	Name	Agency	Position/Title
18.	<i>Jim Hoppel</i>		<i>County Commissioner</i>
19.			
20.			
21.			
22.			
23.			
24.			
25.			
26.			
27.			
28.			
29.			
30.			

# Households Hazards Preparedness Questionnaire

Thank you for taking the time to answer this questionnaire and participating in the Columbiana County hazard mitigation planning process. This questionnaire is designed to help the county and the municipalities therein to gauge public perceptions of hazard vulnerability throughout all of Columbiana County. This information you provide will help reduce vulnerability by guiding local leaders as they prioritize mitigation projects.

## HAZARD INFORMATION

1. In the past five (5) years, have you or someone in your household experienced a disaster such as a flood, wind storm, winter storm?

- |  |  |
|--|--|
| <input type="checkbox"/> Drought                     | <input type="checkbox"/> Earthquake              |
| <input type="checkbox"/> Flooding                    | <input type="checkbox"/> Hailstorm               |
| <input type="checkbox"/> Hazardous Material Incident | <input type="checkbox"/> Land Subsidence         |
| <input type="checkbox"/> Terrorism                   | <input type="checkbox"/> Thunderstorm/Lightning  |
| <input type="checkbox"/> Urban Fire                  | <input type="checkbox"/> Wildfire                |
| <input type="checkbox"/> Wind Storm/Tornado          | <input checked="" type="checkbox"/> Winter Storm |

2. How concerned are you personally about the following hazards affecting Columbiana County? (**Circle the corresponding number for each hazard.**)

Disaster	Extremely Concerned	Very Concerned	Concerned	Somewhat Concerned	Not Concerned
Drought	1	2	3	4	5
Earthquake	1	2	3	4	5
Flooding	1	2	3	4	5
Hailstorm	1	2	3	4	5
Hazardous Material Incident	1	2	3	4	5
Land Subsidence	1	2	3	4	5
Terrorism	1	2	3	4	5
Thunderstorm/Lightning	1	2	3	4	5
Urban Fire	1	2	3	4	5
Wildfire	1	2	3	4	5
Wind Storm/Tornado	1	2	3	4	5
Winter Storm	1	2	3	4	5

3. Have you ever received information about how to make your family and home safer from emergency situations?

- ☒ Yes  
☐ No

4. In the following list, please check those activities that you have done in your household, plan to do in the near future, have not done, or are unable to do.  
(Please check one answer for each preparedness activity.)

In your household, have you or someone in your household:

Preparedness activity	Have Done	Plan to Do	Not Done	Un-able to Do
A. Attended meetings or received written information on emergency preparedness?	<input checked="" type="checkbox"/>	<input type="checkbox"/>	<input type="checkbox"/>	<input type="checkbox"/>
B. Talked with members in your household about what to do in case of an emergency?	<input checked="" type="checkbox"/>	<input type="checkbox"/>	<input type="checkbox"/>	<input type="checkbox"/>
C. Developed a "household emergency plan in order to decide what everyone would do in the event of an emergency?"	<input type="checkbox"/>	<input checked="" type="checkbox"/>	<input type="checkbox"/>	<input type="checkbox"/>
D. Prepared a "disaster supply kit" (stored extra food, water, batteries, or other emergency supplies)?	<input checked="" type="checkbox"/>	<input type="checkbox"/>	<input type="checkbox"/>	<input type="checkbox"/>
E. In the last year, has anyone in your household received CPR training?	<input checked="" type="checkbox"/>	<input type="checkbox"/>	<input type="checkbox"/>	<input type="checkbox"/>

#### HAZARD RISK REDUCTION

5. Did you consider the possible occurrence of an emergency when you bought/moved into your current home?
- ☐ Yes  
☒ No
6. Would you be willing to spend more money on a home that had features that made it more disaster-resistant?
- ☐ Yes  
☒ No
7. How much more money are you willing to spend to better protect your family and home from disasters?
- ☒ \$5,000 and above  
☐ \$2,500 - \$4,999  
☐ \$1,000 - \$2,499  
☐ \$500 - \$999  
☐ \$100 - \$499
- ☐ Less than \$100  
☐ Nothing  
☐ Don't know  
☐ Other, please explain: \_\_\_\_\_

#### GENERAL HOUSEHOLD INFORMATION

8. Please indicate your age: 53
9. Gender:
- ☐ Male  
☒ Female



10. Please indicate your level of education:

- |  |  |
|--|--|
| <input type="checkbox"/> Grade school / no schooling | <input checked="" type="checkbox"/> College degree |
| <input type="checkbox"/> Some high school            | <input type="checkbox"/> Postgraduate degree       |
| <input type="checkbox"/> High school graduate / GED  | <input type="checkbox"/> Other                     |
| <input type="checkbox"/> Some college / trade school |  |

11. Zip Code: 44441

12. How long have you lived in Columbiana County?

- |   |  |
|---|--|
| <input type="checkbox"/> Less than one year | <input type="checkbox"/> 10 – 19 years               |
| <input type="checkbox"/> 1 – 5 years        | <input checked="" type="checkbox"/> 20 years or more |
| <input type="checkbox"/> 5 – 9 years        |  |

OTHER COMMENTS:

THANK YOU FOR PROVIDING THIS INFORMATION

# Households Hazards Preparedness Questionnaire

Thank you for taking the time to answer this questionnaire and participating in the Columbiana County hazard mitigation planning process. This questionnaire is designed to help the county and the municipalities therein to gauge public perceptions of hazard vulnerability throughout all of Columbiana County. This information you provide will help reduce vulnerability by guiding local leaders as they prioritize mitigation projects.

## HAZARD INFORMATION

1. In the past five (5) years, have you or someone in your household experienced a disaster such as a flood, wind storm, winter storm?

- |  |  |
|--|--|
| <input type="checkbox"/> Drought                     | <input type="checkbox"/> Earthquake                        |
| <input checked="" type="checkbox"/> Flooding         | <input checked="" type="checkbox"/> Hailstorm              |
| <input type="checkbox"/> Hazardous Material Incident | <input type="checkbox"/> Land Subsidence                   |
| <input type="checkbox"/> Terrorism                   | <input checked="" type="checkbox"/> Thunderstorm/Lightning |
| <input type="checkbox"/> Urban Fire                  | <input type="checkbox"/> Wildfire                          |
| <input type="checkbox"/> Wind Storm/Tornado          | <input checked="" type="checkbox"/> Winter Storm           |

2. How concerned are you personally about the following hazards affecting Columbiana County? (**Circle the corresponding number for each hazard.**)

Disaster	Extremely Concerned	Very Concerned	Concerned	Somewhat Concerned	Not Concerned
Drought	1	2	3	4	5
Earthquake	1	2	3	4	5
Flooding	1	2	3	4	5
Hailstorm	1	2	3	4	5
Hazardous Material Incident	1	2	3	4	5
Land Subsidence	1	2	3	4	5
Terrorism	1	2	3	4	5
Thunderstorm/Lightning	1	2	3	4	5
Urban Fire	1	2	3	4	5
Wildfire	1	2	3	4	5
Wind Storm/Tornado	1	2	3	4	5
Winter Storm	1	2	3	4	5

3. Have you ever received information about how to make your family and home safer from emergency situations?

- ☐ Yes  
☒ No

4. In the following list, please check those activities that you have done in your household, plan to do in the near future, have not done, or are unable to do.  
(Please check one answer for each preparedness activity.)

In your household, have you or someone in your household:

Preparedness activity	Have Done	Plan to Do	Not Done	Un-able to Do
A. Attended meetings or received written information on emergency preparedness?	<input type="checkbox"/>	<input type="checkbox"/>	<input type="checkbox"/>	<input type="checkbox"/>
B. Talked with members in your household about what to do in case of an emergency?	<input type="checkbox"/>	<input type="checkbox"/>	<input type="checkbox"/>	<input type="checkbox"/>
C. Developed a "household emergency plan in order to decide what everyone would do in the event of an emergency?"	<input type="checkbox"/>	<input type="checkbox"/>	<input type="checkbox"/>	<input type="checkbox"/>
D. Prepared a "disaster supply kit" (stored extra food, water, batteries, or other emergency supplies)?	<input type="checkbox"/>	<input type="checkbox"/>	<input type="checkbox"/>	<input type="checkbox"/>
E. In the last year, has anyone in your household received CPR training?	<input type="checkbox"/>	<input type="checkbox"/>	<input type="checkbox"/>	<input type="checkbox"/>

#### HAZARD RISK REDUCTION

5. Did you consider the possible occurrence of an emergency when you bought/moved into your current home?  
☒ Yes  
☐ No
6. Would you be willing to spend more money on a home that had features that made it more disaster-resistant?  
☒ Yes  
☐ No
7. How much more money are you willing to spend to better protect your family and home from disasters?  
☐ \$5,000 and above  
☐ \$2,500 - \$4,999  
☐ \$1,000 - \$2,499  
☐ \$500 - \$999  
☐ \$100 - \$499  
☐ Less than \$100  
☐ Nothing  
☒ Don't know  
☐ Other, please explain: \_\_\_\_\_

#### GENERAL HOUSEHOLD INFORMATION

8. Please indicate your age: 68
9. Gender:  
☐ Male  
☒ Female

10. Please indicate your level of education:

- |  |  |
|--|--|
| <input type="checkbox"/> Grade school / no schooling           | <input type="checkbox"/> College degree      |
| <input type="checkbox"/> Some high school                      | <input type="checkbox"/> Postgraduate degree |
| <input checked="" type="checkbox"/> High school graduate / GED | <input type="checkbox"/> Other               |
| <input type="checkbox"/> Some college / trade school           |  |

11. Zip Code: 43445

12. How long have you lived in Columbiana County?

- |   |  |
|---|--|
| <input type="checkbox"/> Less than one year | <input type="checkbox"/> 10 – 19 years               |
| <input type="checkbox"/> 1 – 5 years        | <input checked="" type="checkbox"/> 20 years or more |
| <input type="checkbox"/> 5 – 9 years        |  |

OTHER COMMENTS:

**THANK YOU FOR PROVIDING THIS INFORMATION**

Name (Optional): J. GRONER

Agency (Optional): CITY OF COLUMBIANA

To what hazard do you feel Columbiana County is *most* vulnerable? Why? \_\_\_\_\_

HAZMAT INCIDENT INVOLVING THE MAIN LINE RAILROAD  
TRANSVERSING THE COUNTY OR TRUCKED ON STATE ROUTES

List one project that you feel would lessen hazard-related loss: \_\_\_\_\_

Name (Optional): Julie Dunlop RN

Agency (Optional): East Liverpool City Hospital

To what hazard do you feel Columbiana County is *most* vulnerable? Why? \_\_\_\_\_

Hazmat - Nuclear - BOPP  
Waste Management

List one project that you feel would lessen hazard-related loss: \_\_\_\_\_

Training

## Doug Britvec

---

**From:** Edie Dillard - CCOEMA [edie.dillard@ccoema.org]  
**Sent:** Tuesday, September 11, 2012 2:23 PM  
**To:** 'Doug Britvec'  
**Cc:** samantha.works@ccoema.org  
**Subject:** RE: Ad for Public Meeting

Doug,

We sent the ad to the Morning Journal to be posted. Attached is a 25 year and 100 year HAZUS flood report.

Thanks,

Edie Dillard  
Interim Director  
Columbiana County EMA  
215 South Market Street  
Lisbon, Ohio 44432  
Work: 330-424-9725  
Cell: 234-567-3053  
FAX: 330-424-9267



---

**From:** Doug Britvec [<mailto:dbritvec@jhcemergencypreparedness.com>]  
**Sent:** Tuesday, September 11, 2012 10:20 AM  
**To:** [edie.dillard@ccoema.org](mailto:edie.dillard@ccoema.org)  
**Subject:** Ad for Public Meeting  
**Importance:** High

Good Morning Edie,

Did you by chance run an ad in the local newspaper concerning the Stakeholders/Public Meeting that was held Friday? If so, could you email or fax me a copy of the Ad?

Many Thanks,  
**Doug Britvec**  
Project Manager

JH Consulting, LLC  
29 East Main Street, Suite 1  
Buckhannon, WV 26201  
Phone: (304) 473-1009  
Fax: (304) 473-1099  
Cellular: (304) 612-5332  
[www.jhcemergencypreparedness.com](http://www.jhcemergencypreparedness.com)  
Email: [dbritvec@jhcemergencypreparedness.com](mailto:dbritvec@jhcemergencypreparedness.com)



## Doug Britvec

---

**From:** Edie Dillard [edie.dillard@ccoema.org]  
**Sent:** Wednesday, May 15, 2013 3:47 PM  
**To:** Doug Britvec  
**Subject:** FW: RE: Columbiana County Hazard Mitigation Plan

---

**From:** Edie Dillard [<mailto:edie.dillard@ccoema.org>]  
**Sent:** Wednesday, May 15, 2013 3:42 PM  
**To:** 'whill@co.beaver.pa.us'  
**Subject:** RE: Columbiana County Hazard Mitigation Plan

May 15, 2013

Wes Hill, Director  
Beaver County Emergency Services  
351 14th Street  
Ambridge, PA 15003  
PH: 724-775-1700  
24 Hour Non-Emergency Dispatch: 724-775-0880

Re: Columbiana County Multi-Jurisdictional All-Hazard Mitigation Plan Update

Dear Wes:

The Columbiana County Risk Assessment and Mitigation Planning Committee in coordination with a consultant are in the process of updating the Columbiana County Multi-Jurisdictional All-Hazard Mitigation Plan. An open public involvement process is essential to the development of an effective plan. In order to develop a more comprehensive approach to reducing the effects of natural disasters, and in the spirit of the whole-community approach we would like to extend an opportunity for neighboring communities, local and regional agencies, businesses, academia and other private and non-profit interests to be involved in the planning process. We would like to invite you review the plan at your convenience. A copy of the Columbiana County Multi-Jurisdictional All-Hazard Mitigation Plan update is on file at the Columbiana County Emergency Management Agency office and can be reviewed during regular business hours of 8 a.m. to 4 p.m. Comment forms are also available to write any comments that you have concerning the plan, these comments will be collected by Columbiana County Emergency Management Agency.

Thank you for your participation in the plan updating process. Should you have any questions or comments, feel free to contact me at 330.424.9725.

Sincerely,

*Edie Dillard*

Deputy Director  
[Columbiana County EMA](#)  
215 South Market Street  
Lisbon, Ohio 44432

## Doug Britvec

---

**From:** Edie Dillard [edie.dillard@ccoema.org]  
**Sent:** Wednesday, May 15, 2013 3:47 PM  
**To:** Doug Britvec  
**Subject:** FW: RE: Columbiana County Hazard Mitigation Plan

---

**From:** Edie Dillard [<mailto:edie.dillard@ccoema.org>]  
**Sent:** Wednesday, May 15, 2013 3:38 PM  
**To:** [ccemalepc@eohio.net](mailto:ccemalepc@eohio.net)  
**Subject:** RE: Columbiana County Hazard Mitigation Plan

May 15, 2013

Tom Cottis, Director  
P.O. Box 628  
Carrollton, Ohio 44615  
(330) 627-0003 (24 hr)  
(330) 627-3013 (fax)

### Re: Columbiana County Multi-Jurisdictional All-Hazard Mitigation Plan Update

Dear Tom:

The Columbiana County Risk Assessment and Mitigation Planning Committee in coordination with a consultant are in the process of updating the *Columbiana County Multi-Jurisdictional All-Hazard Mitigation Plan*. An open public involvement process is essential to the development of an effective plan. In order to develop a more comprehensive approach to reducing the effects of natural disasters, and in the spirit of the whole-community approach we would like to extend an opportunity for neighboring communities, local and regional agencies, businesses, academia and other private and non-profit interests to be involved in the planning process. We would like to invite you review the plan at your convenience. A copy of the *Columbiana County Multi-Jurisdictional All-Hazard Mitigation Plan* update is on file at the Columbiana County Emergency Management Agency office and can be reviewed during regular business hours of 8 a.m. to 4 p.m. Comment forms are also available to write any comments that you have concerning the plan, these comments will be collected by Columbiana County Emergency Management Agency.

Thank you for your participation in the plan updating process. Should you have any questions or comments, feel free to contact me at 330.424.9725.

Sincerely,



## Doug Britvec

---

**From:** Edie Dillard [edie.dillard@ccoema.org]  
**Sent:** Wednesday, May 15, 2013 3:47 PM  
**To:** Doug Britvec  
**Subject:** FW: RE: Columbiana County Hazard Mitigation Plan

---

**From:** Edie Dillard [<mailto:edie.dillard@ccoema.org>]  
**Sent:** Wednesday, May 15, 2013 3:45 PM  
**To:** [jpj4040@hotmail.com](mailto:jpj4040@hotmail.com)  
**Subject:** RE: Columbiana County Hazard Mitigation Plan

May 15, 2013

John Paul Jones, Director  
Hancock County Office of Emergency Management  
102 North Court Street  
New Cumberland, WV 26047  
Phone: 304-564-3311 Ext. 277  
Fax: 304-564-4031

Re: Columbiana County Multi-Jurisdictional All-Hazard Mitigation Plan Update

Dear John Paul:

The Columbiana County Risk Assessment and Mitigation Planning Committee in coordination with a consultant are in the process of updating the Columbiana County Multi-Jurisdictional All-Hazard Mitigation Plan. An open public involvement process is essential to the development of an effective plan. In order to develop a more comprehensive approach to reducing the effects of natural disasters, and in the spirit of the whole-community approach we would like to extend an opportunity for neighboring communities, local and regional agencies, businesses, academia and other private and non-profit interests to be involved in the planning process. We would like to invite you review the plan at your convenience. A copy of the Columbiana County Multi-Jurisdictional All-Hazard Mitigation Plan update is on file at the Columbiana County Emergency Management Agency office and can be reviewed during regular business hours of 8 a.m. to 4 p.m. Comment forms are also available to write any comments that you have concerning the plan, these comments will be collected by Columbiana County Emergency Management Agency.

Thank you for your participation in the plan updating process. Should you have any questions or comments, feel free to contact me at 330.424.9725.

Sincerely,

*Edie Dillard*

Deputy Director  
[Columbiana County EMA](#)  
215 South Market Street  
Lisbon, Ohio 44432

## Doug Britvec

---

**From:** Edie Dillard [edie.dillard@ccoema.org]  
**Sent:** Thursday, May 16, 2013 8:41 AM  
**To:** Doug Britvec  
**Subject:** FW: RE: Columbiana County Hazard Mitigation Plan  
**Attachments:** 20130516\_082724.jpg; 20130516\_082700.jpg

Sorry, I forgot one. I also sent you a couple pics of our setup for people to look at the old plan versus the new plan.

Thanks,  
Edie

---

**From:** Edie Dillard [<mailto:edie.dillard@ccoema.org>]  
**Sent:** Thursday, May 16, 2013 8:28 AM  
**To:** 'parkjeff19@yahoo.com'  
**Subject:** RE: Columbiana County Hazard Mitigation Plan

May 16, 2013

John Parker, Director  
Jefferson County EMA  
300 Airport Road, P.O. Box 2039  
Wintersville, Ohio 43953  
Office: (740) 264-4646

Re: Columbiana County Multi-Jurisdictional All-Hazard Mitigation Plan Update

Dear John:

The Columbiana County Risk Assessment and Mitigation Planning Committee in coordination with a consultant are in the process of updating the Columbiana County Multi-Jurisdictional All-Hazard Mitigation Plan. An open public involvement process is essential to the development of an effective plan. In order to develop a more comprehensive approach to reducing the effects of natural disasters, and in the spirit of the whole-community approach we would like to extend an opportunity for neighboring communities, local and regional agencies, businesses, academia and other private and non-profit interests to be involved in the planning process. We would like to invite you review the plan at your convenience. A copy of the Columbiana County Multi-Jurisdictional All-Hazard Mitigation Plan update is on file at the Columbiana County Emergency Management Agency office and can be reviewed during regular business hours of 8 a.m. to 4 p.m. Comment forms are also available to write any comments that you have concerning the plan, these comments will be collected by Columbiana County Emergency Management Agency.

Thank you for your participation in the plan updating process. Should you have any questions or comments, feel free to contact me at 330.424.9725.

Sincerely,

*Edie Dillard*

## Doug Britvec

---

**From:** Edie Dillard [edie.dillard@ccoema.org]  
**Sent:** Wednesday, May 15, 2013 3:47 PM  
**To:** Doug Britvec  
**Subject:** FW: RE: Columbiana County Hazard Mitigation Plan

---

**From:** Edie Dillard [<mailto:edie.dillard@ccoema.org>]  
**Sent:** Wednesday, May 15, 2013 3:30 PM  
**To:** 'cljones@mahoningcountyoh.gov'  
**Subject:** RE: Columbiana County Hazard Mitigation Plan

May 15, 2013

Clark Jones, Director Mahoning County EMA  
700 Industrial Rd  
Youngstown, OH 44509  
Phone: 330-740-2200  
Fax: 330-270-7779

Re: Columbiana County Multi-Jurisdictional All-Hazard Mitigation Plan Update

Dear Clark:

The Columbiana County Risk Assessment and Mitigation Planning Committee in coordination with a consultant are in the process of updating the Columbiana County Multi-Jurisdictional All-Hazard Mitigation Plan. An open public involvement process is essential to the development of an effective plan. In order to develop a more comprehensive approach to reducing the effects of natural disasters, and in the spirit of the whole-community approach we would like to extend an opportunity for neighboring communities, local and regional agencies, businesses, academia and other private and non-profit interests to be involved in the planning process. We would like to invite you review the plan at your convenience. A copy of the Columbiana County Multi-Jurisdictional All-Hazard Mitigation Plan update is on file at the Columbiana County Emergency Management Agency office and can be reviewed during regular business hours of 8 a.m. to 4 p.m. Comment forms are also available to write any comments that you have concerning the plan, these comments will be collected by Columbiana County Emergency Management Agency.

Thank you for your participation in the plan updating process. Should you have any questions or comments, feel free to contact me at 330.424.9725.

Sincerely,

*Edie Dillard*

Deputy Director  
Columbiana County EMA  
215 South Market Street  
Lisbon, Ohio 44432  
Work: 330-424-9725  
Cell: 234-567-3053  
FAX: 330-424-9267

## Doug Britvec

---

**From:** Edie Dillard [edie.dillard@ccoema.org]  
**Sent:** Wednesday, May 15, 2013 3:47 PM  
**To:** Doug Britvec  
**Subject:** FW: RE: Columbiana County Hazard Mitigation Plan

---

**From:** Edie Dillard [<mailto:edie.dillard@ccoema.org>]  
**Sent:** Wednesday, May 15, 2013 3:32 PM  
**To:** 'StarkEMA@co.stark.oh.us'  
**Subject:** RE: Columbiana County Hazard Mitigation Plan

May 15, 2013

Tim Warstler, EMA Director  
4500 Atlantic Blvd-LL  
Canton, Ohio 44705  
Phone : 330-451-3900  
Fax : 330-451-3934

Re: Columbiana County Multi-Jurisdictional All-Hazard Mitigation Plan Update

Dear Tim:

The Columbiana County Risk Assessment and Mitigation Planning Committee in coordination with a consultant are in the process of updating the Columbiana County Multi-Jurisdictional All-Hazard Mitigation Plan. An open public involvement process is essential to the development of an effective plan. In order to develop a more comprehensive approach to reducing the effects of natural disasters, and in the spirit of the whole-community approach we would like to extend an opportunity for neighboring communities, local and regional agencies, businesses, academia and other private and non-profit interests to be involved in the planning process. We would like to invite you review the plan at your convenience. A copy of the Columbiana County Multi-Jurisdictional All-Hazard Mitigation Plan update is on file at the Columbiana County Emergency Management Agency office and can be reviewed during regular business hours of 8 a.m. to 4 p.m. Comment forms are also available to write any comments that you have concerning the plan, these comments will be collected by Columbiana County Emergency Management Agency.

Thank you for your participation in the plan updating process. Should you have any questions or comments, feel free to contact me at 330.424.9725.

Sincerely,

*Edie Dillard*

Deputy Director  
Columbiana County EMA  
215 South Market Street  
Lisbon, Ohio 44432  
Work: 330-424-9725  
Cell: 234-567-3053  
FAX: 330-424-9267

## MITIGATION PLAN AVAILABLE FOR REVIEW

The Columbiana County Hazard Mitigation Core Planning Committee is currently in the process of updating the Columbiana County Hazard Mitigation Plan.

This plan identifies the hazards to which Columbiana County is susceptible as well as a variety of projects that can be undertaken to lessen the effects of those hazards. The original document is available for public review at the Columbiana County Emergency Operations Center at 215 South Market Street in Lisbon from 8:00am to 3:00pm, Monday through Friday. A form will be provided to document any comments.

The Columbiana County Hazard Mitigation Plan was developed in 2006 per federal requirements in Section 322 of the Robert T. Stafford Disaster Relief and Emergency Assistance Act, as enacted by Section 104 of the Disaster Mitigation Act of 2000.

## MITIGATION PLAN AVAILABLE FOR REVIEW

The Columbiana County Hazard Mitigation Core Planning Committee has recently completed an update to the Columbiana County Hazard Mitigation Plan.

This plan identifies the hazards to which Columbiana County is susceptible as well as a variety of projects that can be undertaken to lessen the effects of those hazards.

The updated document is available for public review at the Columbiana County Emergency Operations Center at 215 South Market Street in Lisbon from May 20<sup>th</sup> through May 24<sup>th</sup>. A form will be provided to document any comments.

The Columbiana County Hazard Mitigation Plan was developed in 2006 per federal requirements in Section 322 of the Robert T. Stafford Disaster Relief and Emergency Assistance Act, as enacted by Section 104 of the Disaster Mitigation Act of 2000.

## Doug Britvec

---

**From:** Edie Dillard [edie.dillard@ccoema.org]  
**Sent:** Wednesday, May 15, 2013 3:48 PM  
**To:** Doug Britvec  
**Subject:** FW: RE: Columbiana County Hazard Mitigation Plan

---

**From:** Edie Dillard [<mailto:edie.dillard@ccoema.org>]  
**Sent:** Wednesday, May 15, 2013 3:27 PM  
**To:** Morning Journal Newspaper ([news@mojonews.com](mailto:news@mojonews.com)); Salem Newspaper ([ewihg@salemnews.net](mailto:ewihg@salemnews.net))  
**Subject:** RE: Columbiana County Hazard Mitigation Plan

## MITIGATION PLAN AVAILABLE FOR REVIEW

The Columbiana County Hazard Mitigation Core Planning Committee has recently completed an update to the Columbiana County Hazard Mitigation Plan.

This plan identifies the hazards to which Columbiana County is susceptible as well as a variety of projects that can be undertaken to lessen the effects of those hazards. The updated document is available for public review at the Columbiana County Emergency Operations Center at 215 South Market Street in Lisbon from May 20<sup>th</sup>, 2013 through May 24<sup>th</sup>, 2013. A form will be provided to document any comments.

The Columbiana County Hazard Mitigation Plan was developed in 2006 per federal requirements in Section 322 of the Robert T. Stafford Disaster Relief and Emergency Assistance Act, as enacted by Section 104 of the Disaster Mitigation Act of 2000.

*Edie Dillard*

Deputy Director  
*Columbiana County EMA*  
215 South Market Street  
Lisbon, Ohio 44432  
Work: 330-424-9725  
Cell: 234-567-3053  
FAX: 330-424-9267



# FAMILY LIVING

Saturday, May 18, 2013

Morning Journal

7A

## NEGLEY

Plant sale & luncheon, UMC, 10 a.m.

## NEWELL, W.Va.

Community dinner, First Presbyterian, 4-6 p.m.

## NORTH LIMA

Chicken barbecue, Calvary UMC, \$9, \$6.50, carry-out, 3:30-6:30 p.m.

Pancake breakfast, Good Hope Lutheran, by Blue Ribbon Wranglers 4-H club, all you can eat, 7-11 a.m.

## ROGERS

Clothing & houseware giveaway, Lake Mount Church of Christ, st. Rt. 7, 9 a.m.-1 p.m.

## SALEM

Yard sale & flea market, Memorial Building, 8 a.m.-2 p.m.

Yard & sidewalk sale, East State Street, 8 a.m.-5 p.m.  
SHS Class of 1969, pizza party, 1177 N. Lincoln Ave., 5 p.m.

## SALINEVILLE

Blood drive, Church of Christ, 11 a.m.-3 p.m.

Breakfast, Kiwanis building, all you can eat, \$6, \$4, carryout, 7:30-10:30 a.m.

## WELLSVILLE

WHS Class of 1971, Tonda's Place, 10 a.m.

ing, 5 p.m.

## EAST PALESTINE

Rotary, First United Presbyterian, noon

EPHS Class of 1965, Sal's, 6 p.m.

EPHS Class of 1953, Golden Rye Grille, noon

Bonnie's Day, Rogers Sale dining room, 11 a.m.

## ELKTON

Elkrun Township Tourism Bureau, township garage, 4:30 p.m.

## LISBON

Disaster Action Team, County EMA, 215 S. Market St., 6 p.m.

Senior Citizens, Lions Club, 10 a.m.

ESC Governing Board, ESC office, 4:30 p.m.

## NEGLEY

Middleton Township Trustees, township garage, 6 p.m.

## ROGERS

Compassionate Friends of Beaver Creek, Rogers Sale dining room, 6 p.m.

## SALEM

Blood drive, Elks, double reds, 2-7 p.m.

## WELLSVILLE

School board, superintendent's office, 6:30 p.m.

Garden Club, Centenary UMC, noon

## HANOVERTON

Historical Society, museum, 7 p.m.

UHS Class of 1961, Salem Hills, 1 p.m.

## LEETONIA

Veterans Outpost support group, Point Man's LZ Refuge, 692-1832, 7 p.m.

Friends of the Library, library, 6 p.m.

## LISBON

HMG play group, Robert Bycroft, 424-0288, 10 a.m.

New Lisbon Lodge 65, special meeting, Masonic Center, 7 p.m.

FCFC mandated member, MHRS offices, 9 a.m.

Early Childhood Coordinating Committee, MHRS offices, 10:15 a.m.

Center Township Zoning Committee, township garage, 7 p.m.

CCCTC Board, media center, 6:30 p.m.

## NEW SPRINGFIELD

VFW Men's Auxiliary, post, 8 p.m.

## SALEM

School board, Buckeye Elementary library, 7 p.m.; work study, 5:30 p.m.

## WELLSVILLE

Village Personnel Committee, village hall, 5:30 p.m.

Stephens was KOPS best loser and wore the officer ribbon. Lisa Ceneviva won the 50/50. Cassy Stephenson won the calorie charts.

This new chapter meets every Tuesday with weigh in from 5-6 p.m. For more information, call Ceneviva at 330-303-0543 or Stephens at 330-385-4468.

## TOPS 1390

EAST LIVERPOOL — TOPS 1390 met this week at the Oakland Free Methodist Church. Mary Ann DeGarmo gave the pledges. Weekly best loser was Sharron Wolfe with Ginny Montgomery and Vesta Ferlino being the runners-up.

Weekly winners were Carol Wright, dimes; Food charts, Marguerite Nedreberg, food charts; Ann McGee, 50/50; Debbie Ice and Florence Smith, check contest. Birthdays were celebrated by Jonnie Carnes, Wright and Wilma Selmon, while Carnes celebrated her anniversary.

The program, by May Kinemond, was working out on a chair sitting.

female. After my divorce I met a man I enjoyed being with. He led me to believe he cared for me and I bought into it. It was a vulnerable time for me and, unfortunately, I let my guard down. I did something stupid and co-signed for a stu-

gestions? — HURTING IN DOVER, DEL.

DEAR HURTING: It would not be unfriendly to simply say, "It's nice to meet you, but I can't shake hands because I have arthritis." Many people do, and it's the truth.

## Report available for review

The Columbiana County Hazard Mitigation Core Planning Committee recently completed updating its hazardous mitigation plan identifying hazards and steps that can be taken to minimize impacts. The report is available for public review at the EMA offices in Lisbon from May 20-24. The EMA is required by federal to update the plan.

To honor the memory of not only our brave veterans, but all of our loved ones who have gone on before, fill one of our memory blocks.

appearing with our Memorial Day Flag, May 25 in the Morning Journal.

CENTURY 21 REAL ESTATE

## Submissions

To be assured of publication

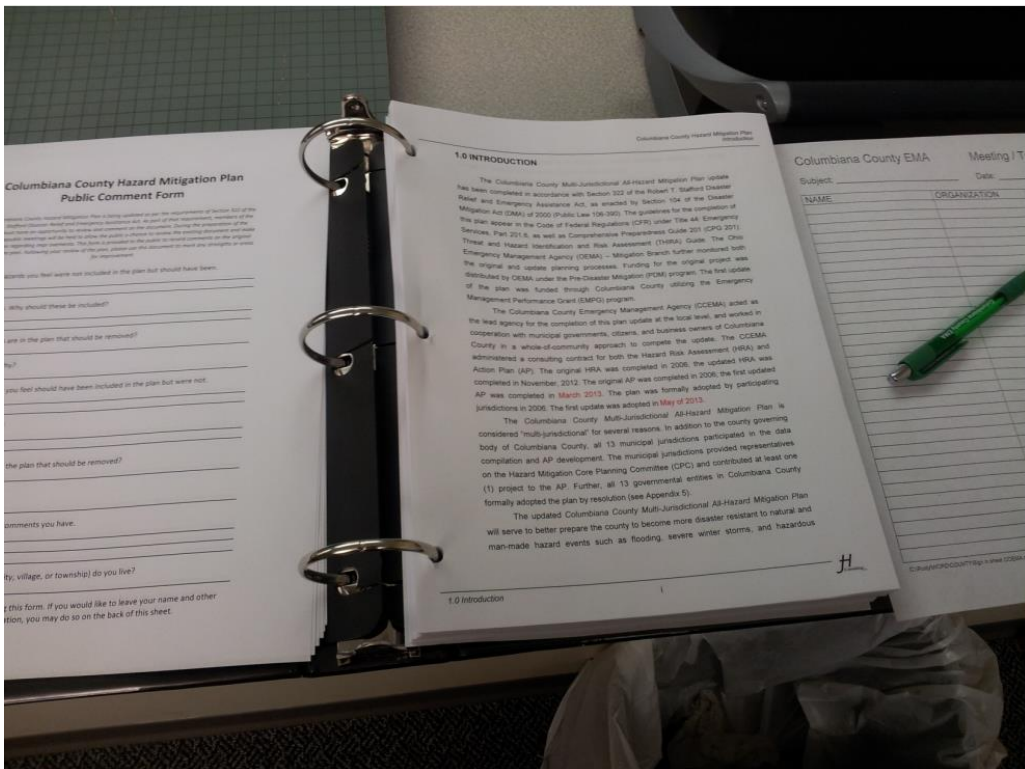
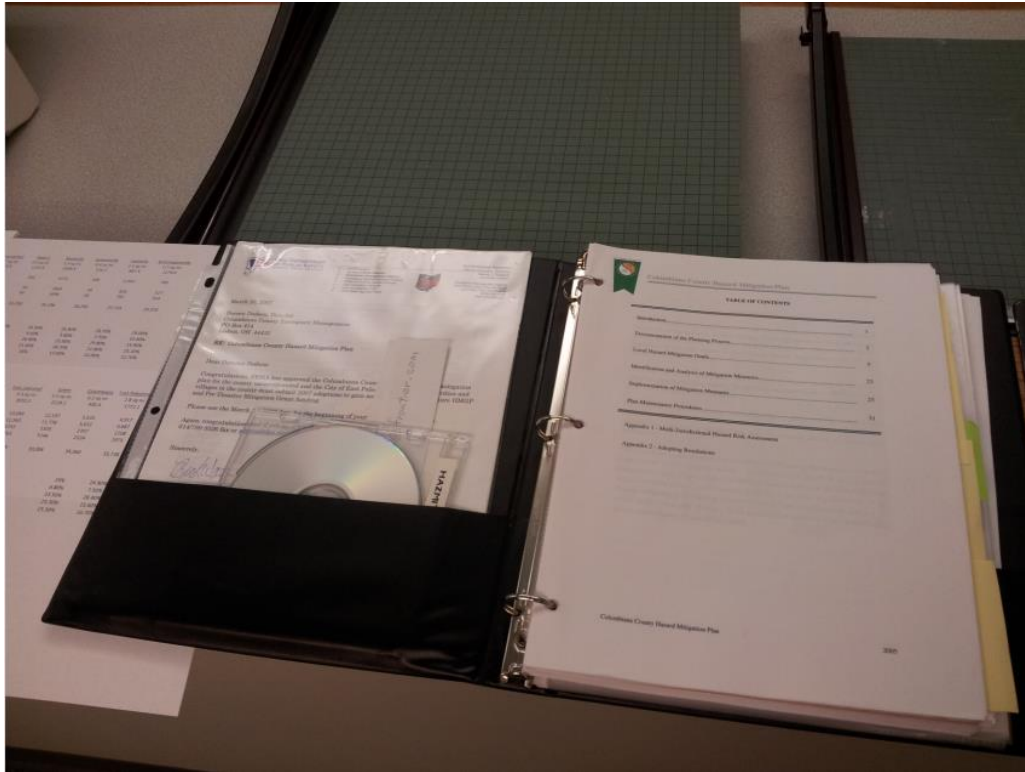
**BANKRUPTCY**  
Chapter 7 & 13  
attorneys at law

THE LINKS AT  
A4-26  
FIRESTONE FARMS

BANQUET  
CENTER



# Evidence of Plan Review Setup



# Columbiana County Hazard Mitigation Plan

## Public Comment Form

*The Columbiana County Hazard Mitigation Plan is being updated as per the requirements of Section 322 of the Robert T. Stafford Disaster Relief and Emergency Assistance Act. As part of that requirement, members of the public must have an opportunity to review and comment on the document. During the preparation of the update, onepublic meetings will be held to allow the public a chance to review the existing document and make suggestions regarding impr ovements. This form is provided to the public to record comments on the original version of the plan. Following your review of the plan, please use this document to mark any strengths or areas for improvement.*

1. List any hazards you feel were not included in the plan but should have been.

---

---

1a. Why should these be included?

---

---

2. What hazards are in the plan that should be removed?

---

2a. Why?

---

3. List any projects you feel should have been included in the plan but were not.

---

---

3a. Why?

---

---

4. What projects are in the plan that should be removed?

---

4a. Why?

---

5. Please list any general comments you have.

---

---

---

6. In what jurisdiction (i.e., city, village, or township) do you live?

---

THANK YOU for completing this form. If you would like to leave your name and other contact information, you may do so on the back of this sheet.

# Columbiana County Hazard Mitigation Plan

## Public Comment Form

*The Columbiana County Hazard Mitigation Plan has been updated as per the requirements of Section 322 of the Robert T. Stafford Disaster Relief and Emergency Assistance Act. As part of that requirement, members of the public must have an opportunity to review and comment on the document. During the preparation of the update, one public meeting was held to allow the public a chance to review the existing document and make suggestions regarding improvements. This form is provided to the public to record comments on the updated version of the plan. Following your review of the plan, please use this document to mark any strengths or areas for improvement.*

1. List any hazards you feel were not included in the plan but should have been.

---

---

1a. Why should these be included?

---

---

2. What hazards are in the plan that should be removed?

---

2a. Why?

---

3. List any projects you feel should have been included in the plan but were not.

---

---

3a. Why?

---

---

4. What projects are in the plan that should be removed?

---

4a. Why?

---

5. Please list any general comments you have.

---

---

---

6. In what jurisdiction (i.e., city, village, or township) do you live?

---

THANK YOU for completing this form. If you would like to leave your name and other contact information, you may do so on the back of this sheet.

## Doug Britvec

---

**From:** Edie Dillard - CCOEMA [edie.dillard@ccoema.org]  
**Sent:** Tuesday, March 05, 2013 10:12 AM  
**To:** 'Doug Britvec'  
**Subject:** RE: AOMI info.

Thank you very much!!!

Edie

---

**From:** Doug Britvec [<mailto:dbritvec@jhcemergencypreparedness.com>]  
**Sent:** Tuesday, March 05, 2013 10:07 AM  
**To:** 'Edie Dillard - CCOEMA'  
**Subject:** AOMI info.

Edie,

As we identify possible areas of mitigation interest we can zoom to the location and add a new AOMI for Columbiana County, see below. This was taken from the OEMA website, mitigation tab then planning, then on the left AOMI link, then select Columbiana from Jump to a County pull down.

Find an Address

Ex: 100 Federal Plaza, Youngstown, OH

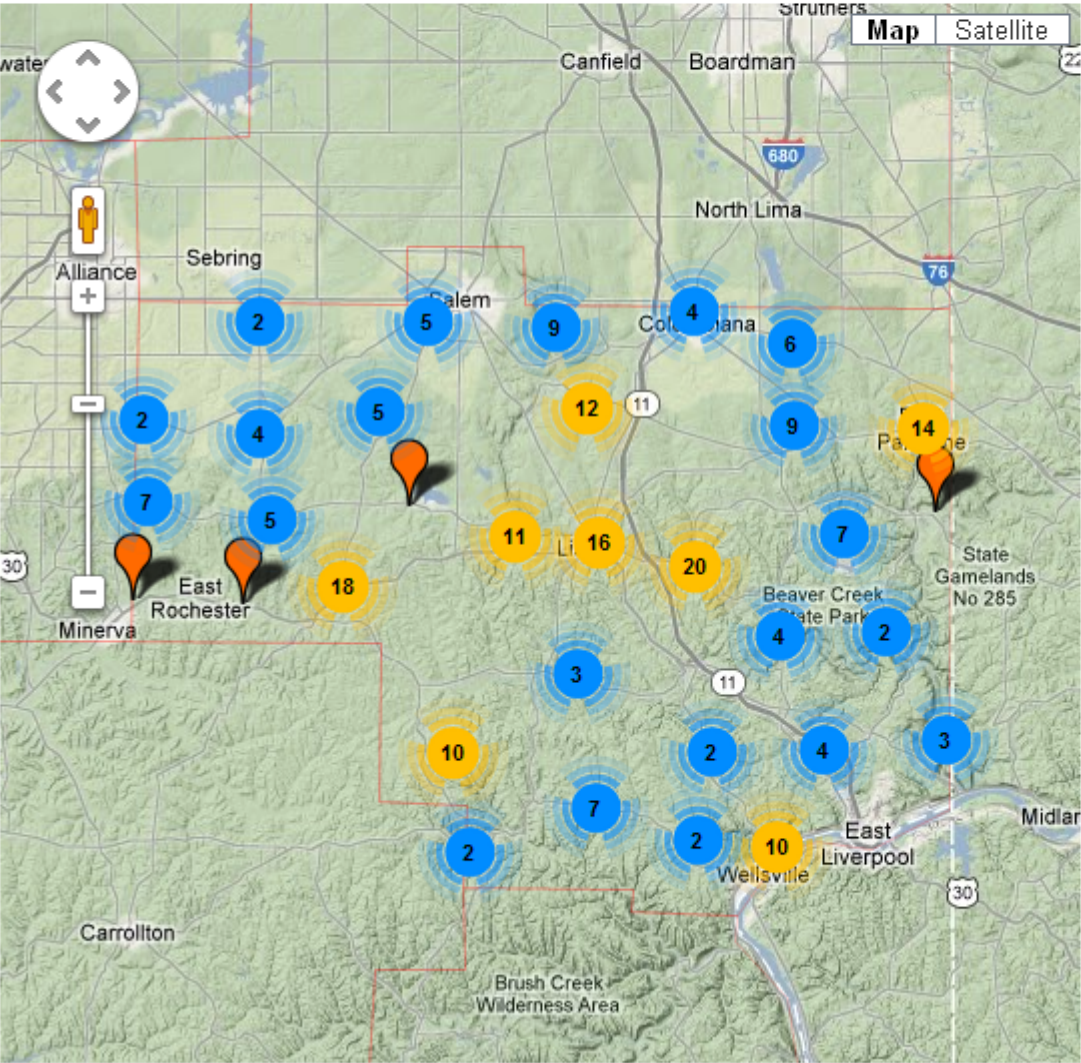
Enter an Address

[Find Address »](#)

Jump to a County

Select an option from below.

Columbiana



AOMI Information

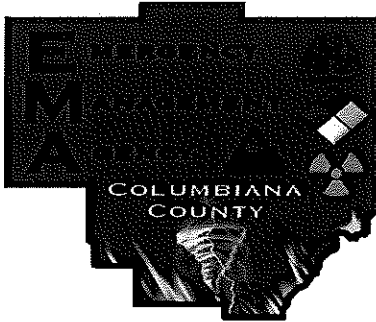
[+ Add new AOMI](#)

Getting Started

To get started, zoom to the location of the Mitigation Interest. Then, click on "Add" to place a point on the specific location.

Stop Clustering AOMIs

Color	Type
<span style="color: green;">■</span>	Other Flood Risk Areas (10)
<span style="color: green;">■</span>	Under Capacity Culvert or Bridge (10)
<span style="color: green;">■</span>	Past Claims Hot Spot (5)
<span style="color: blue;">■</span>	Dams (138)
<span style="color: purple;">■</span>	Significant Non-Levee Embankment
<span style="color: red;">■</span>	Key Emergency Routes Over



# **COLUMBIANA COUNTY EMERGENCY MANAGEMENT AGENCY**

215 SOUTH MARKET STREET, LISBON, OH 44432

OFFICE: 330-424-9725 FAX: 330-424-9267

## **MEMORANDUM**

**TO:** BOARD OF COLUMBIANA COUNTY COMMISSIONERS

**SUBJECT:** DIRECTOR POSITION

**DATE:** 9/11/2012

This memo is to inform you that under the Ohio Revised Code 5502 requirements for a county to remain an eligible participant in the Emergency Management Performance Grant program and other Federal and State funding in the event that a county EMA director position is vacated, the county must fill the director vacancy within 90 days. The time-period for this period will end on October 30, 2012. Upon expiration, the County Commissioners will need to submit a letter to the Executive Director of the Ohio Emergency Management Agency, Nancy J. Dragani, explaining the reason why this position is not filled.

Thank you,

Edie Dillard, Interim Director

Columbiana County E.M.A.

## **APPENDIX 5: ADOPTING RESOLUTIONS**

This appendix contains copies of the resolutions signed and adopted by each participating jurisdiction.

**RESOLUTION – COLUMBIANA COUNTY BOARD OF COUNTY COMMISSIONERS**

WHEREAS natural, technological, and man-made hazards can affect Columbiana County; and

WHEREAS significant structural, historical, and economic losses could result from an occurrence of a natural, technological, or man-made hazard events; and

WHEREAS undertaking mitigation projects during pre-disaster periods could decrease the total losses Columbiana County incurs as a result of said hazard occurrences.

THEREFORE the Columbiana County Commission has undertaken a project to update the existing *Columbiana County Multi-Jurisdictional All-Hazard Mitigation Plan*, adopted in 2006, in an effort to further identify, define, and characterize the hazards affecting Columbiana County as well as to continue identifying and prioritizing projects that could lessen hazard vulnerability.

WHEREAS the Columbiana County Commission has a strong interest in reducing losses from future hazard occurrences; and

WHEREAS the hazard mitigation plan is a federal and state requirement to maintain eligibility for hazard mitigation funding, and, by that requirement, must be updated a minimum of every five (5) years; and

WHEREAS a cooperative, joint effort is a proven, efficient way to plan for and reduce hazard susceptibility in all government jurisdictions in Columbiana County, Ohio.

THEREFORE the Columbiana County Commission joined the Cities of Columbiana, East Liverpool, and Salem; as well as the Villages of East Palestine, Hanoverton, Leetonia, Lisbon, New Waterford, Rogers, Salineville, Summitville, Washingtonville and Wellsville in the completion of this plan update.

NOW BE IT RESOLVED THAT the Columbiana County Board of County Commissioners does hereby adopt the updated *Columbiana County Multi-Jurisdictional All-Hazard Mitigation Plan* (as presented and with any state/federally-required modifications) this \_\_\_\_ day of \_\_\_\_\_, 20\_\_.

SIGNED: \_\_\_\_\_  
President, Board of Commissioners

\_\_\_\_\_  
Witness



## RESOLUTION – CITY OF COLUMBIANA

WHEREAS natural, technological, and man-made hazards can affect the City of Columbiana; and

WHEREAS significant structural, historical, and economic losses could result from an occurrence of a natural, technological, or man-made hazard events; and

WHEREAS undertaking mitigation projects during pre-disaster periods could decrease the total losses the City of Columbiana incurs as a result of said hazard occurrences.

THEREFORE the Columbiana City Council has partnered with the county to update the existing *Columbiana County Multi-Jurisdictional All-Hazard Mitigation Plan*, adopted in 2006, in an effort to further identify, define, and characterize the hazards affecting the city as well as to continue identifying and prioritizing projects that could lessen hazard vulnerability.

WHEREAS the Columbiana City Council has a strong interest in reducing losses from future hazard occurrences; and

WHEREAS the hazard mitigation plan is a federal and state requirement to maintain eligibility for hazard mitigation funding, and, by that requirement, must be updated a minimum of every five (5) years; and

WHEREAS a cooperative, joint effort is a proven, efficient way to plan for and reduce hazard susceptibility in all government jurisdictions in Columbiana County, Ohio.

THEREFORE the City of Columbiana joined Columbiana County in the completion of this plan update.

NOW BE IT RESOLVED THAT the Columbiana City Council does hereby adopt the updated *Columbiana County Multi-Jurisdictional All-Hazard Mitigation Plan* (as presented and with any state/federally-required modifications) this \_\_\_\_ day of \_\_\_\_\_, 20\_\_.

SIGNED: \_\_\_\_\_  
Mayor

\_\_\_\_\_  
Witness

## RESOLUTION – CITY OF EAST LIVERPOOL

WHEREAS natural, technological, and man-made hazards can affect the City of East Liverpool; and

WHEREAS significant structural, historical, and economic losses could result from an occurrence of a natural, technological, or man-made hazard events; and

WHEREAS undertaking mitigation projects during pre-disaster periods could decrease the total losses the City of East Liverpool incurs as a result of said hazard occurrences.

THEREFORE the East Liverpool City Council has partnered with the county to update the existing *Columbiana County Multi-Jurisdictional All-Hazard Mitigation Plan*, adopted in 2006, in an effort to further identify, define, and characterize the hazards affecting the City as well as to continue identifying and prioritizing projects that could lessen hazard vulnerability.

WHEREAS the East Liverpool City Council has a strong interest in reducing losses from future hazard occurrences; and

WHEREAS the hazard mitigation plan is a federal and state requirement to maintain eligibility for hazard mitigation funding, and, by that requirement, must be updated a minimum of every five (5) years; and

WHEREAS a cooperative, joint effort is a proven efficient way to plan for, and reduce, hazard susceptibility in all government jurisdictions in Columbiana County, Ohio.

THEREFORE the City of East Liverpool joined Columbiana County in the completion of this plan update.

NOW BE IT RESOLVED THAT the East Liverpool City Council does hereby adopt the updated *Columbiana County Multi-Jurisdictional All-Hazard Mitigation Plan* (as presented and with any state/federally-required modifications) this \_\_\_\_ day of \_\_\_\_\_, 20\_\_.

SIGNED: \_\_\_\_\_  
Mayor

\_\_\_\_\_  
Witness

## RESOLUTION – VILLAGE OF EAST PALESTINE

WHEREAS natural, technological, and man-made hazards can affect the Village of East Palestine; and

WHEREAS significant structural, historical, and economic losses could result from an occurrence of a natural, technological, or man-made hazard events; and

WHEREAS undertaking mitigation projects during pre-disaster periods could decrease the total losses the Village of East Palestine incurs as a result of said hazard occurrences.

THEREFORE the East Palestine Village Council has partnered with the county to update the existing *Columbiana County Multi-Jurisdictional All-Hazard Mitigation Plan*, adopted in 2006, in an effort to further identify, define, and characterize the hazards affecting the Village as well as to continue identifying and prioritizing projects that could lessen hazard vulnerability.

WHEREAS the East Palestine Village Council has a strong interest in reducing losses from future hazard occurrences; and

WHEREAS the hazard mitigation plan is a federal and state requirement to maintain eligibility for hazard mitigation funding, and, by that requirement, must be updated a minimum of every five (5) years; and

WHEREAS a cooperative, joint effort is a proven, efficient way to plan for and reduce hazard susceptibility in all government jurisdictions in Columbiana County, Ohio.

THEREFORE the Village of East Palestine joined Columbiana County in the completion of this plan update.

NOW BE IT RESOLVED THAT the East Palestine Village Council does hereby adopt the updated *Columbiana County Multi-Jurisdictional All-Hazard Mitigation Plan* (as presented and with any state/federally-required modifications) this \_\_\_\_ day of \_\_\_\_\_, 20\_\_.

SIGNED: \_\_\_\_\_  
Mayor

\_\_\_\_\_  
Witness

## RESOLUTION – VILLAGE OF HANOVERTON

WHEREAS natural, technological, and man-made hazards can affect the Village of Hanoverton; and

WHEREAS significant structural, historical, and economic losses could result from an occurrence of a natural, technological, or man-made hazard events; and

WHEREAS undertaking mitigation projects during pre-disaster periods could decrease the total losses the Village of Hanoverton incurs as a result of said hazard occurrences.

THEREFORE the Hanoverton Village Council has partnered with the county to update the existing *Columbiana County Multi-Jurisdictional All-Hazard Mitigation Plan*, adopted in 2006, in an effort to further identify, define, and characterize the hazards affecting the village as well as to continue identifying and prioritizing projects that could lessen hazard vulnerability.

WHEREAS the Hanoverton Village Council has a strong interest in reducing losses from future hazard occurrences; and

WHEREAS the hazard mitigation plan is a federal and state requirement to maintain eligibility for hazard mitigation funding, and, by that requirement, must be updated a minimum of every five (5) years; and

WHEREAS a cooperative, joint effort, is a proven efficient way to plan for and reduce hazard susceptibility in all government jurisdictions in Columbiana County, Ohio.

THEREFORE the Village of Hanoverton joined Columbiana County in the completion of this plan update.

NOW BE IT RESOLVED THAT the Hanoverton Village Council does hereby adopt the updated *Columbiana County Multi-Jurisdictional All-Hazard Mitigation Plan* (as presented and with any state/federally-required modifications) this \_\_\_\_ day of \_\_\_\_\_, 20\_\_.

SIGNED: \_\_\_\_\_  
Mayor

\_\_\_\_\_  
Witness

## RESOLUTION – VILLAGE OF LEETONIA

WHEREAS natural, technological, and man-made hazards can affect the Village of Leetonia; and

WHEREAS significant structural, historical, and economic losses could result from an occurrence of a natural, technological, or man-made hazard events; and

WHEREAS undertaking mitigation projects during pre-disaster periods could decrease the total losses the Village of Leetonia incurs as a result of said hazard occurrences.

THEREFORE the Leetonia Village Council has partnered with the county to update the existing *Columbiana County Multi-Jurisdictional All-Hazard Mitigation Plan*, adopted in 2006, in an effort to further identify, define, and characterize the hazards affecting the Village as well as to continue identifying and prioritizing projects that could lessen hazard vulnerability.

WHEREAS the Leetonia Village Council has a strong interest in reducing losses from future hazard occurrences; and

WHEREAS the hazard mitigation plan is a federal and state requirement to maintain eligibility for hazard mitigation funding, and, by that requirement, must be updated a minimum of every five (5) years; and

WHEREAS a cooperative, joint effort is a proven, efficient way to plan for and reduce hazard susceptibility in all government jurisdictions in Columbiana County, Ohio.

THEREFORE the Village of Leetonia joined Columbiana County in the completion of this plan update.

NOW BE IT RESOLVED THAT the Leetonia Village Council does hereby adopt the updated *Columbiana County Multi-Jurisdictional All-Hazard Mitigation Plan* (as presented and with any state/federally-required modifications) this \_\_\_\_ day of \_\_\_\_\_, 20\_\_.

SIGNED: \_\_\_\_\_  
Mayor

\_\_\_\_\_  
Witness

## RESOLUTION – VILLAGE OF LISBON

WHEREAS natural, technological, and man-made hazards can affect the Village of Lisbon; and

WHEREAS significant structural, historical, and economic losses could result from an occurrence of a natural, technological, or man-made hazard events; and

WHEREAS undertaking mitigation projects during pre-disaster periods could decrease the total losses the Village of Lisbon incurs as a result of said hazard occurrences.

THEREFORE the Lisbon Village Council has partnered with the county to update the existing *Columbiana County Multi-Jurisdictional All-Hazard Mitigation Plan*, adopted in 2006, in an effort to further identify, define, and characterize the hazards affecting the village as well as to continue identifying and prioritizing projects that could lessen hazard vulnerability.

WHEREAS the Lisbon Village Council has a strong interest in reducing losses from future hazard occurrences; and

WHEREAS the hazard mitigation plan is a federal and state requirement to maintain eligibility for hazard mitigation funding, and, by that requirement, must be updated a minimum of every five (5) years; and

WHEREAS a cooperative, joint effort is a proven efficient way to plan for, and reduce, hazard susceptibility in all government jurisdictions in Columbiana County, Ohio.

THEREFORE the Village of Lisbon joined Columbiana County in the completion of this plan update.

NOW BE IT RESOLVED THAT the Lisbon Village Council does hereby adopt the updated *Columbiana County Multi-Jurisdictional All-Hazard Mitigation Plan* (as presented and with any state/federally-required modifications) this \_\_\_\_\_ day of \_\_\_\_\_, 20\_\_.

SIGNED: \_\_\_\_\_  
Mayor

\_\_\_\_\_  
Witness

## RESOLUTION – VILLAGE OF NEW WATERFORD

WHEREAS natural, technological, and man-made hazards can affect the Village of New Waterford; and

WHEREAS significant structural, historical, and economic losses could result from an occurrence of a natural, technological, or man-made hazard events; and

WHEREAS undertaking mitigation projects during pre-disaster periods could decrease the total losses the Village of New Waterford incurs as a result of said hazard occurrences.

THEREFORE the New Waterford Village Council has partnered with the county to update the existing *Columbiana County Multi-Jurisdictional All-Hazard Mitigation Plan*, adopted in 2006, in an effort to further identify, define, and characterize the hazards affecting the village as well as to continue identifying and prioritizing projects that could lessen hazard vulnerability.

WHEREAS the New Waterford Village Council has a strong interest in reducing losses from future hazard occurrences; and

WHEREAS the hazard mitigation plan is a federal and state requirement to maintain eligibility for hazard mitigation funding, and, by that requirement, must be updated a minimum of every five (5) years; and

WHEREAS a cooperative, joint effort is a proven efficient way to plan for, and reduce, hazard susceptibility in all government jurisdictions in Columbiana County, Ohio.

THEREFORE the Village of New Waterford joined Columbiana County in the completion of this plan update.

NOW BE IT RESOLVED THAT the New Waterford Village Council does hereby adopt the updated *Columbiana County Multi-Jurisdictional All-Hazard Mitigation Plan* (as presented and with any state/federally-required modifications) this \_\_\_\_\_ day of \_\_\_\_\_, 20\_\_.

SIGNED: \_\_\_\_\_  
Mayor

\_\_\_\_\_  
Witness

## RESOLUTION – VILLAGE OF ROGERS

WHEREAS natural, technological, and man-made hazards can affect the Village of Rogers; and

WHEREAS significant structural, historical, and economic losses could result from an occurrence of a natural, technological, or man-made hazard events; and

WHEREAS undertaking mitigation projects during pre-disaster periods could decrease the total losses the Village of Rogers incurs as a result of said hazard occurrences.

THEREFORE the Rogers Village Council has partnered with the county to update the existing *Columbiana County Multi-Jurisdictional All-Hazard Mitigation Plan*, adopted in 2006, in an effort to further identify, define, and characterize the hazards affecting the village as well as to continue identifying and prioritizing projects that could lessen hazard vulnerability.

WHEREAS the Rogers Village Council has a strong interest in reducing losses from future hazard occurrences; and

WHEREAS the hazard mitigation plan is a federal and state requirement to maintain eligibility for hazard mitigation funding, and, by that requirement, must be updated a minimum of every five (5) years; and

WHEREAS a cooperative, joint effort is a proven efficient way to plan for, and reduce, hazard susceptibility in all government jurisdictions in Columbiana County, Ohio.

THEREFORE the Village of Rogers joined Columbiana County in the completion of this plan update.

NOW BE IT RESOLVED THAT the Rogers Village Council does hereby adopt the updated *Columbiana County Multi-Jurisdictional All-Hazard Mitigation Plan* (as presented and with any state/federally-required modifications) this \_\_\_\_\_ day of \_\_\_\_\_, 20\_\_.

SIGNED: \_\_\_\_\_  
Mayor

\_\_\_\_\_  
Witness



## RESOLUTION – CITY OF SALEM

WHEREAS natural, technological, and man-made hazards can affect the City of Salem;  
and

WHEREAS significant structural, historical, and economic losses could result from an occurrence of a natural, technological, or man-made hazard events; and

WHEREAS undertaking mitigation projects during pre-disaster periods could decrease the total losses the City of Salem incurs as a result of said hazard occurrences.

THEREFORE the Salem City Council has partnered with the county to update the existing *Columbiana County Multi-Jurisdictional All-Hazard Mitigation Plan*, adopted in 2006, in an effort to further identify, define, and characterize the hazards affecting the city as well as to continue identifying and prioritizing projects that could lessen hazard vulnerability.

WHEREAS the Salem City Council has a strong interest in reducing losses from future hazard occurrences; and

WHEREAS the hazard mitigation plan is a federal and state requirement to maintain eligibility for hazard mitigation funding, and, by that requirement, must be updated a minimum of every five (5) years; and

WHEREAS a cooperative, joint effort is a proven, efficient way to plan for and reduce hazard susceptibility in all government jurisdictions in Columbiana County, Ohio.

THEREFORE the City of Salem joined Columbiana County in the completion of this plan update.

NOW BE IT RESOLVED THAT the Salem City Council does hereby adopt the updated *Columbiana County Multi-Jurisdictional All-Hazard Mitigation Plan* (as presented and with any state/federally-required modifications) this \_\_\_\_ day of \_\_\_\_\_, 20\_\_.

SIGNED: \_\_\_\_\_  
Mayor

\_\_\_\_\_  
Witness

## RESOLUTION – VILLAGE OF SALINEVILLE

WHEREAS natural, technological, and man-made hazards can affect the Village of Salineville; and

WHEREAS significant structural, historical, and economic losses could result from an occurrence of a natural, technological, or man-made hazard events; and

WHEREAS undertaking mitigation projects during pre-disaster periods could decrease the total losses the Village of Salineville incurs as a result of said hazard occurrences.

THEREFORE the Salineville Village Council has partnered with the county to update the existing *Columbiana County Multi-Jurisdictional All-Hazard Mitigation Plan*, adopted in 2006, in an effort to further identify, define, and characterize the hazards affecting the village as well as to continue identifying and prioritizing projects that could lessen hazard vulnerability.

WHEREAS the Salineville Village Council has a strong interest in reducing losses from future hazard occurrences; and

WHEREAS the hazard mitigation plan is a federal and state requirement to maintain eligibility for hazard mitigation funding, and, by that requirement, must be updated a minimum of every five (5) years; and

WHEREAS a cooperative, joint effort is a proven efficient way to plan for, and reduce, hazard susceptibility in all government jurisdictions in Columbiana County, Ohio.

THEREFORE the Village of Salineville joined Columbiana County in the completion of this plan update.

NOW BE IT RESOLVED THAT the Salineville Village Council does hereby adopt the updated *Columbiana County Multi-Jurisdictional All-Hazard Mitigation Plan* (as presented and with any state/federally-required modifications) this \_\_\_\_\_ day of \_\_\_\_\_, 20\_\_.

SIGNED: \_\_\_\_\_  
Mayor

\_\_\_\_\_  
Witness

## RESOLUTION – VILLAGE OF SUMMITVILLE

WHEREAS natural, technological, and man-made hazards can affect the Village of Summitville; and

WHEREAS significant structural, historical, and economic losses could result from an occurrence of a natural, technological, or man-made hazard events; and

WHEREAS undertaking mitigation projects during pre-disaster periods could decrease the total losses the Village of Summitville incurs as a result of said hazard occurrences.

THEREFORE the Summitville Village Council has partnered with the county to update the existing *Columbiana County Multi-Jurisdictional All-Hazard Mitigation Plan*, adopted in 2006, in an effort to further identify, define, and characterize the hazards affecting the village as well as to continue identifying and prioritizing projects that could lessen hazard vulnerability.

WHEREAS the Summitville Village Council has a strong interest in reducing losses from future hazard occurrences; and

WHEREAS the hazard mitigation plan is a federal and state requirement to maintain eligibility for hazard mitigation funding, and, by that requirement, must be updated a minimum of every five (5) years; and

WHEREAS a cooperative, joint effort is a proven efficient way to plan for, and reduce, hazard susceptibility in all government jurisdictions in Columbiana County, Ohio.

THEREFORE the Village of Summitville joined Columbiana County in the completion of this plan update.

NOW BE IT RESOLVED THAT the Summitville Village Council does hereby adopt the updated *Columbiana County Multi-Jurisdictional All-Hazard Mitigation Plan* (as presented and with any state/federally-required modifications) this \_\_\_\_\_ day of \_\_\_\_\_, 20\_\_.

SIGNED: \_\_\_\_\_  
Mayor

\_\_\_\_\_  
Witness

## RESOLUTION – VILLAGE OF WASHINGTONVILLE

WHEREAS natural, technological, and man-made hazards can affect the Village of Washingtonville; and

WHEREAS significant structural, historical, and economic losses could result from an occurrence of a natural, technological, or man-made hazard events; and

WHEREAS undertaking mitigation projects during pre-disaster periods could decrease the total losses the Village of Washingtonville incurs as a result of said hazard occurrences.

THEREFORE the Washingtonville Village Council has partnered with the county to update the existing *Columbiana County Multi-Jurisdictional All-Hazard Mitigation Plan*, adopted in 2006, in an effort to further identify, define, and characterize the hazards affecting the village as well as to continue identifying and prioritizing projects that could lessen hazard vulnerability.

WHEREAS the Washingtonville Village Council has a strong interest in reducing losses from future hazard occurrences; and

WHEREAS the hazard mitigation plan is a federal and state requirement to maintain eligibility for hazard mitigation funding, and, by that requirement, must be updated a minimum of every five (5) years; and

WHEREAS a cooperative, joint effort is a proven efficient way to plan for, and reduce, hazard susceptibility in all government jurisdictions in Columbiana County, Ohio.

THEREFORE the Village of Washingtonville joined Columbiana County in the completion of this plan update.

NOW BE IT RESOLVED THAT the Washingtonville Village Council does hereby adopt the updated *Columbiana County Multi-Jurisdictional All-Hazard Mitigation Plan* (as presented and with any state/federally-required modifications) this \_\_\_\_ day of \_\_\_\_\_, 20\_\_.

SIGNED: \_\_\_\_\_  
Mayor

\_\_\_\_\_  
Witness

## RESOLUTION – VILLAGE OF WELLSVILLE

WHEREAS natural, technological, and man-made hazards can affect the Village of Wellsville; and

WHEREAS significant structural, historical, and economic losses could result from an occurrence of a natural, technological, or man-made hazard events; and

WHEREAS undertaking mitigation projects during pre-disaster periods could decrease the total losses the Village of Wellsville incurs as a result of said hazard occurrences.

THEREFORE the Wellsville Village Council has partnered with the county to update the existing *Columbiana County Multi-Jurisdictional All-Hazard Mitigation Plan*, adopted in 2006, in an effort to further identify, define, and characterize the hazards affecting the village as well as to continue identifying and prioritizing projects that could lessen hazard vulnerability.

WHEREAS the Wellsville Village Council has a strong interest in reducing losses from future hazard occurrences; and

WHEREAS the hazard mitigation plan is a federal and state requirement to maintain eligibility for hazard mitigation funding, and, by that requirement, must be updated a minimum of every five (5) years; and

WHEREAS a cooperative, joint effort is a proven efficient way to plan for, and reduce, hazard susceptibility in all government jurisdictions in Columbiana County, Ohio.

THEREFORE the Village of Wellsville joined Columbiana County in the completion of this plan update.

NOW BE IT RESOLVED THAT the Wellsville Village Council does hereby adopt the updated *Columbiana County Multi-Jurisdictional All-Hazard Mitigation Plan* (as presented and with any state/federally-required modifications) this \_\_\_\_\_ day of \_\_\_\_\_, 20\_\_.

SIGNED: \_\_\_\_\_  
Mayor

\_\_\_\_\_  
Witness