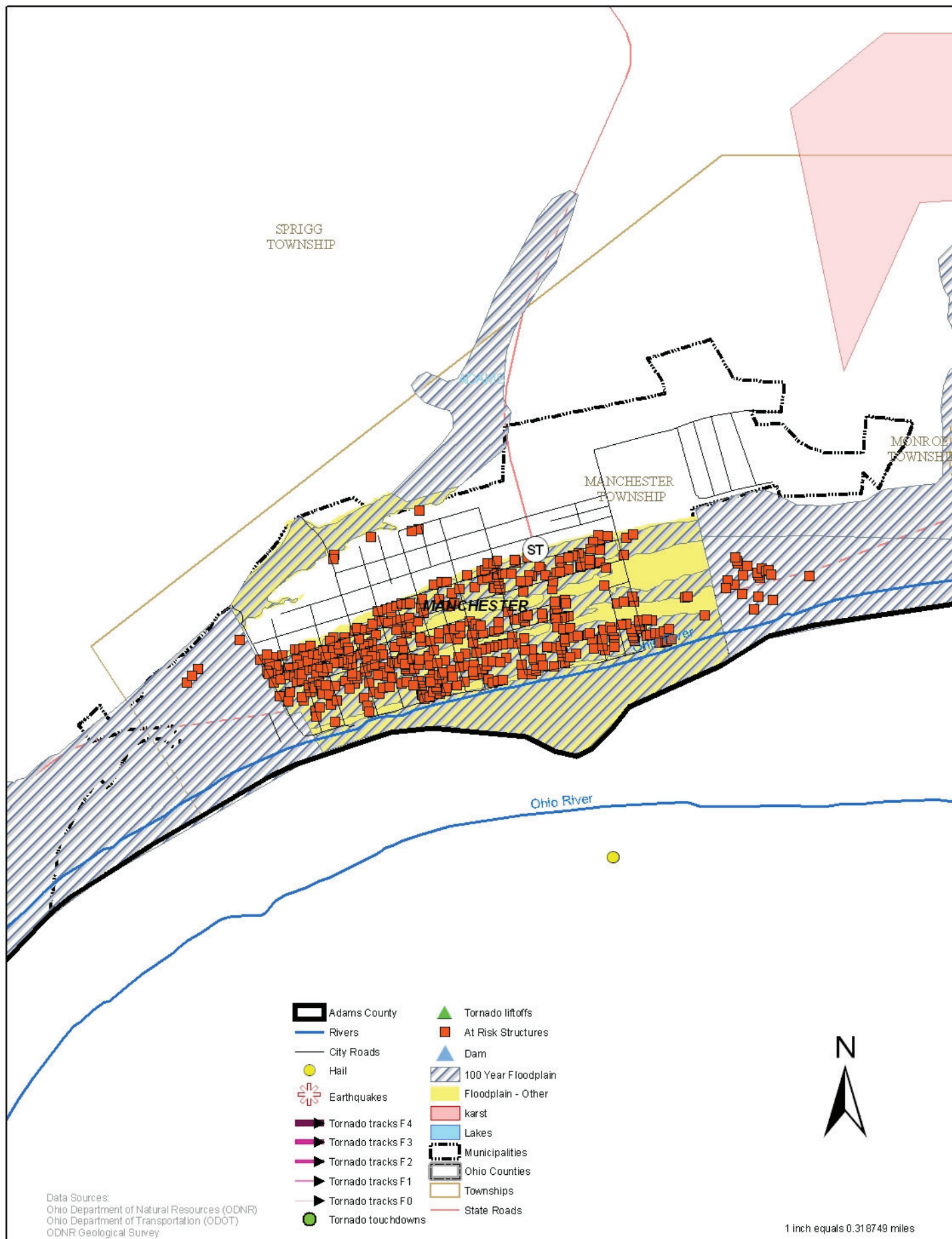


## **APPENDIX G**

### **MULTI - HAZARD MAPS**





**URS**

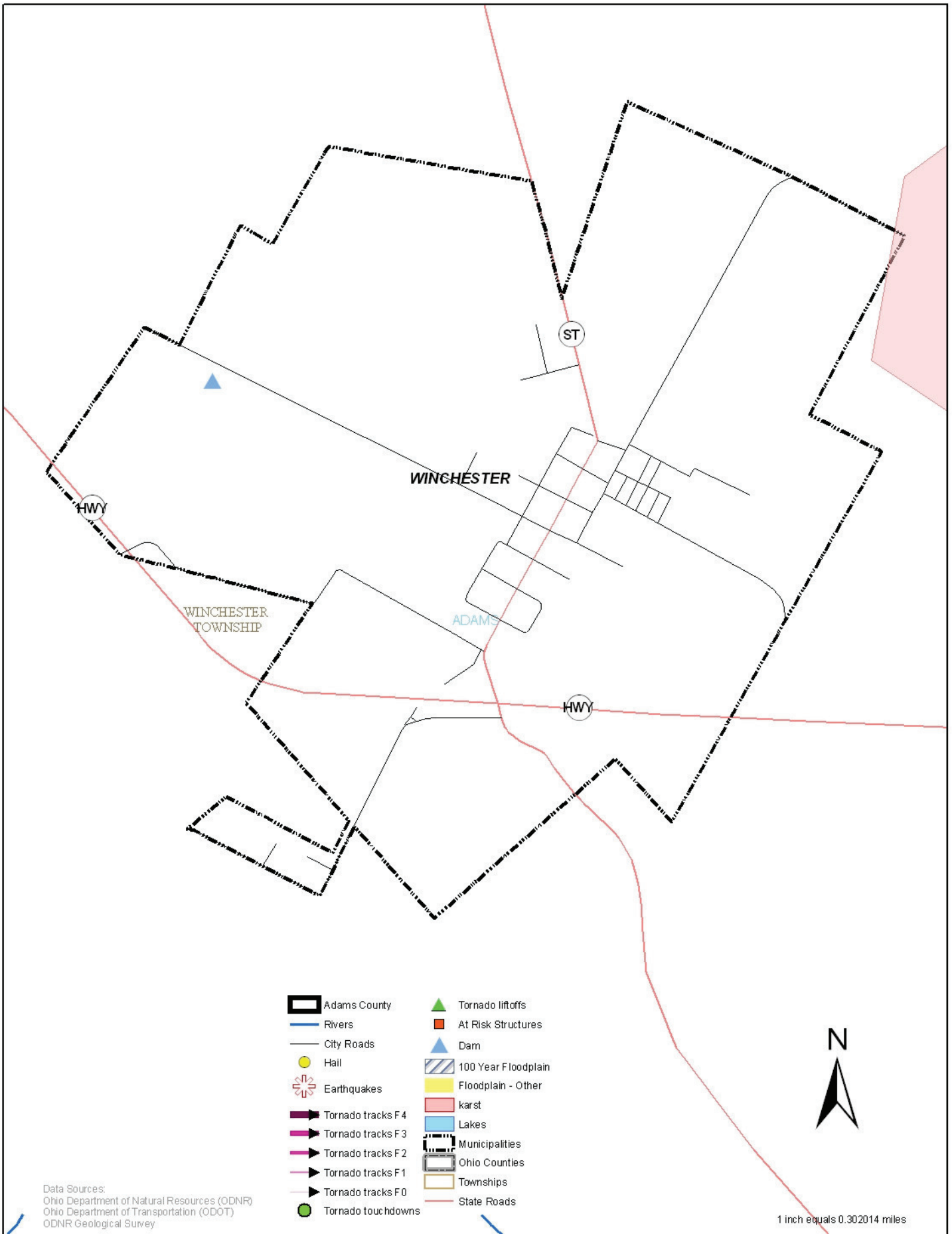
305 West Main Street  
 Suite 1200  
 Louisville, KY 40202

Tel: (502) 569-2301  
 Fax: (502) 569-2304

**ADAMS COUNTY, OHIO  
 MAP G-2  
 COUNTYWIDE ALL NATURAL HAZARDS MITIGATION PLAN  
 Multi-Hazard Map of MANCHESTER, OHIO**

**May 2008**

Job: 14575695



Data Sources:  
 Ohio Department of Natural Resources (ODNR)  
 Ohio Department of Transportation (ODOT)  
 ODNR Geological Survey

1 inch equals 0.302014 miles

**URS**

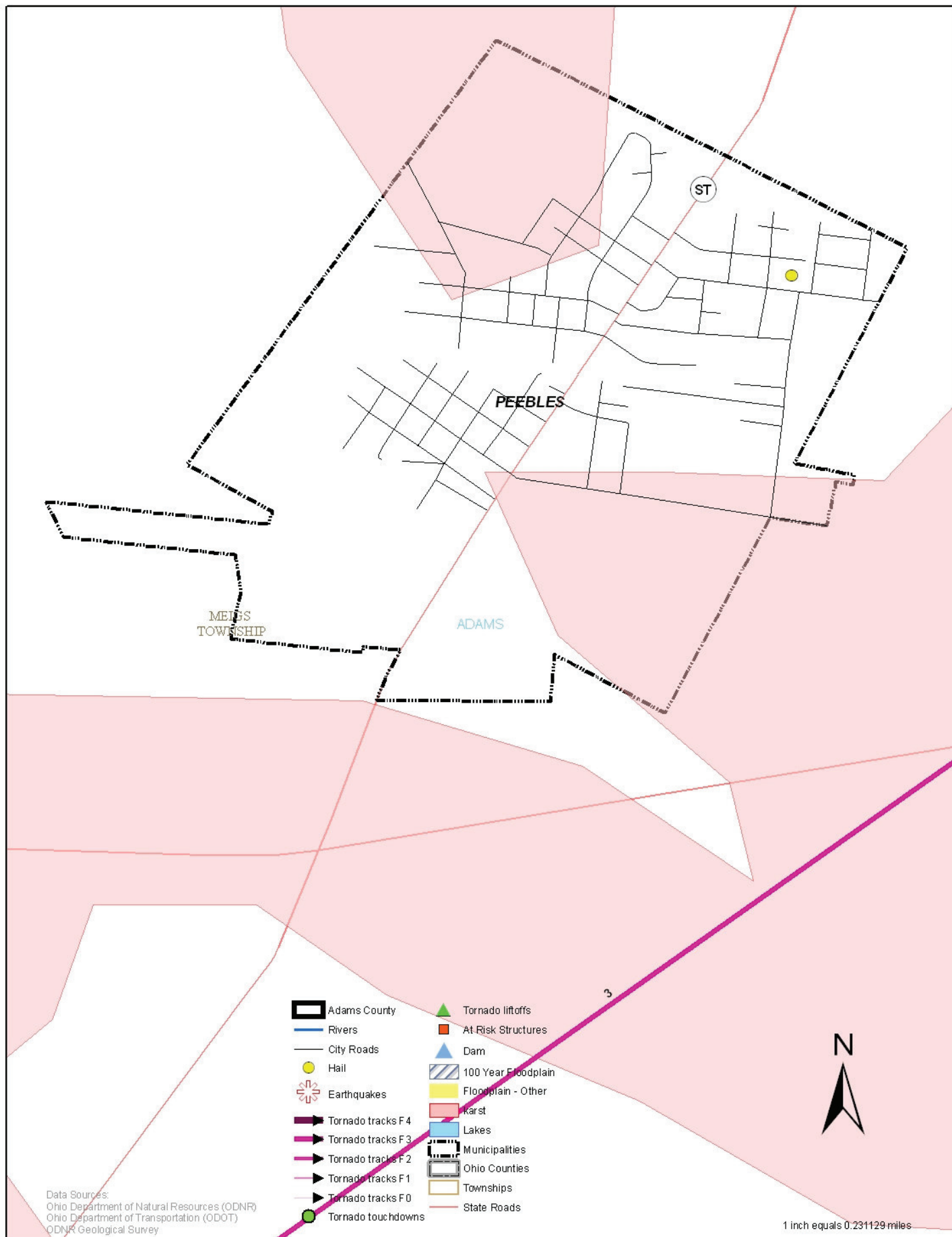
325 West Main Street  
 Suite 1200  
 Louisville, KY 40202

Tel: (502) 569-2301  
 Fax: (502) 569-2304

**ADAMS COUNTY, OHIO**  
**MAP G-3**  
**COUNTYWIDE ALL NATURAL HAZARDS MITIGATION PLAN**  
**Multi-Hazard Map of WINCHESTER, OHIO**

**May 2008**

Job: 14575695



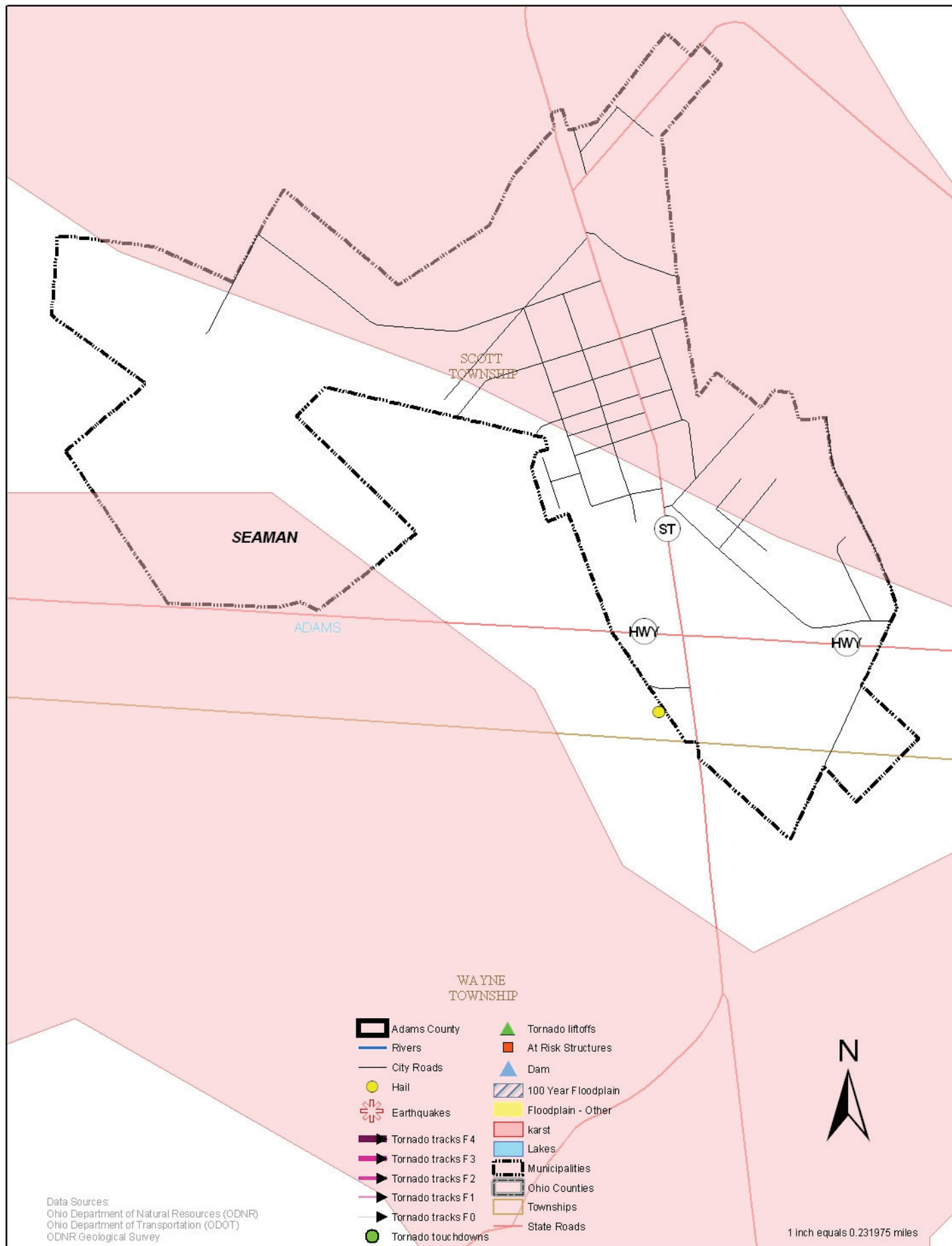
**URS**

325 West Main Street  
 Suite 1200  
 Loveland, OH 45002  
 Telephone: (502) 569-2301  
 Facsimile: (502) 569-2304

**ADAMS COUNTY, OHIO  
 MAP G-4  
 COUNTYWIDE ALL NATURAL HAZARDS MITIGATION PLAN  
 Multi-Hazard Map of PEEBLES, OHIO**

**May 2008**

Job: 14575695

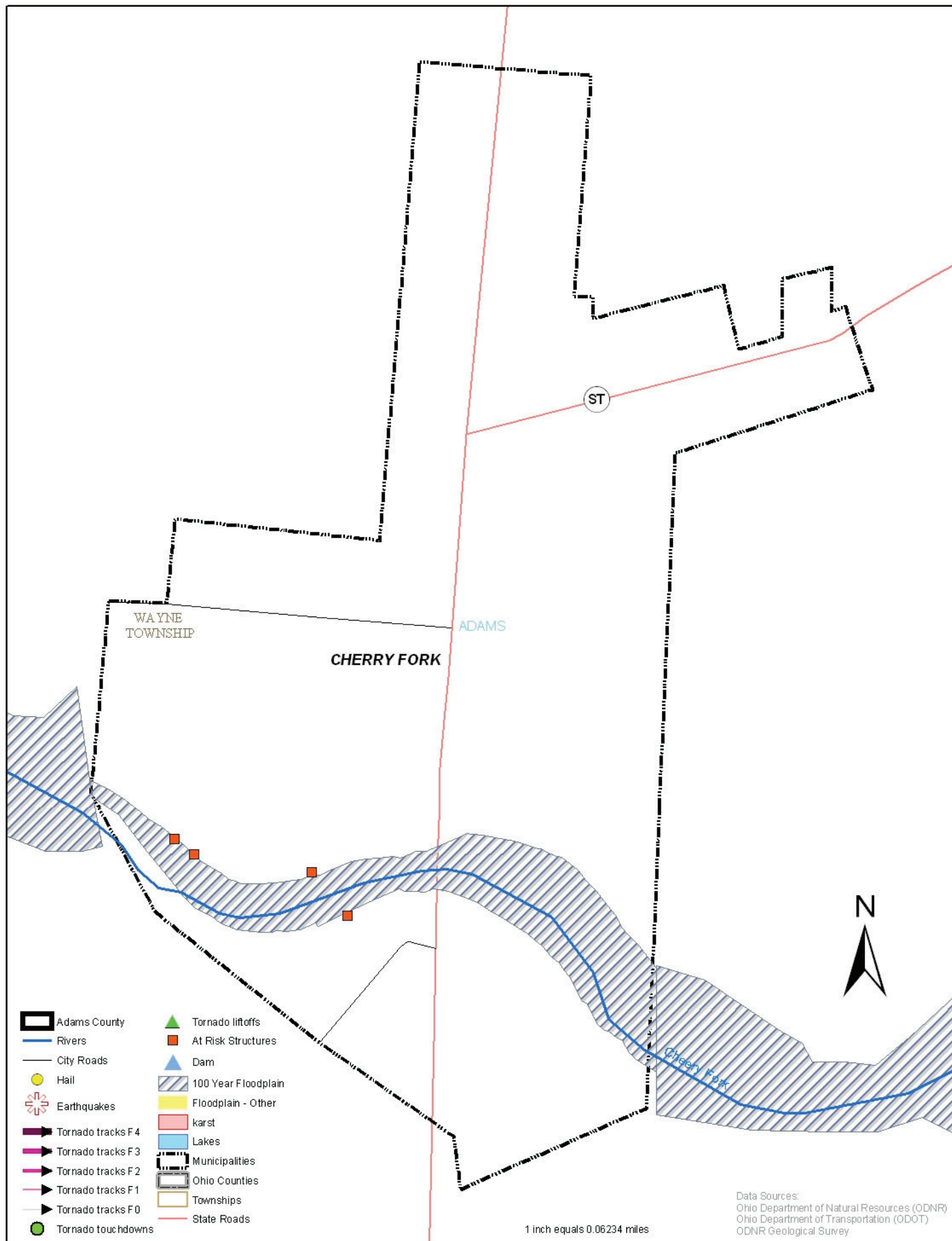


325 West Main Street  
 Suite 1200  
 Louisville, KY 40202  
 Telephone: (502) 569-2300  
 Facsimile: (502) 569-2304

**ADAMS COUNTY, OHIO  
 MAP G-5  
 COUNTYWIDE ALL NATURAL HAZARDS MITIGATION PLAN  
 Multi-Hazard Map of SEAMAN, OHIO**

**May 2008**

Job: 14575695



**URS**

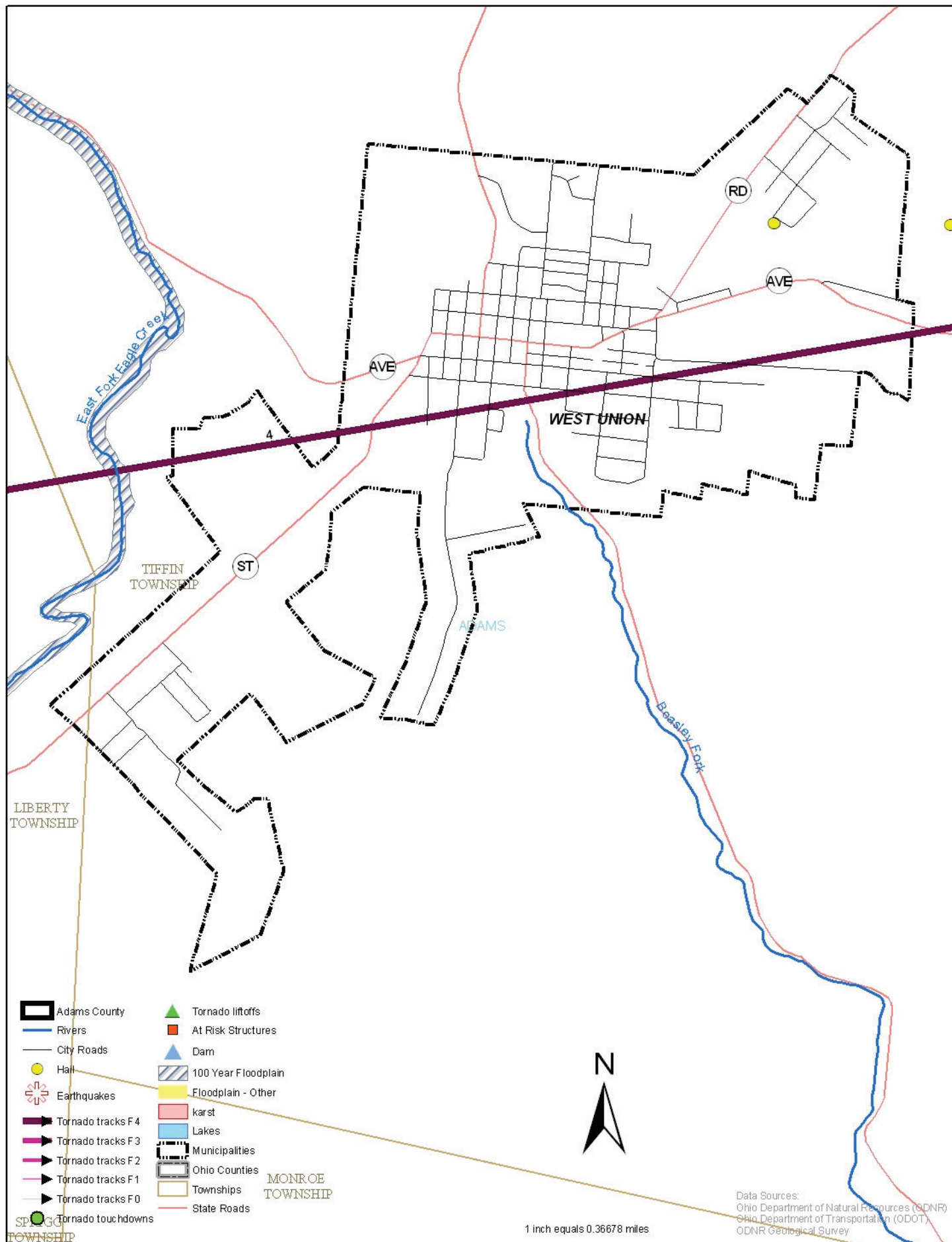
325 West Main Street  
 Suite 1200  
 Louisville, KY 40202

Telephone: (502) 569-2301  
 Facsimile: (502) 569-2304

**ADAMS COUNTY, OHIO  
 MAP G-6  
 COUNTYWIDE ALL NATURAL HAZARDS MITIGATION PLAN  
 Multi-Hazard Map of CHERRY FORK, OHIO**

**May 2008**

Job: 14575695



**URS**

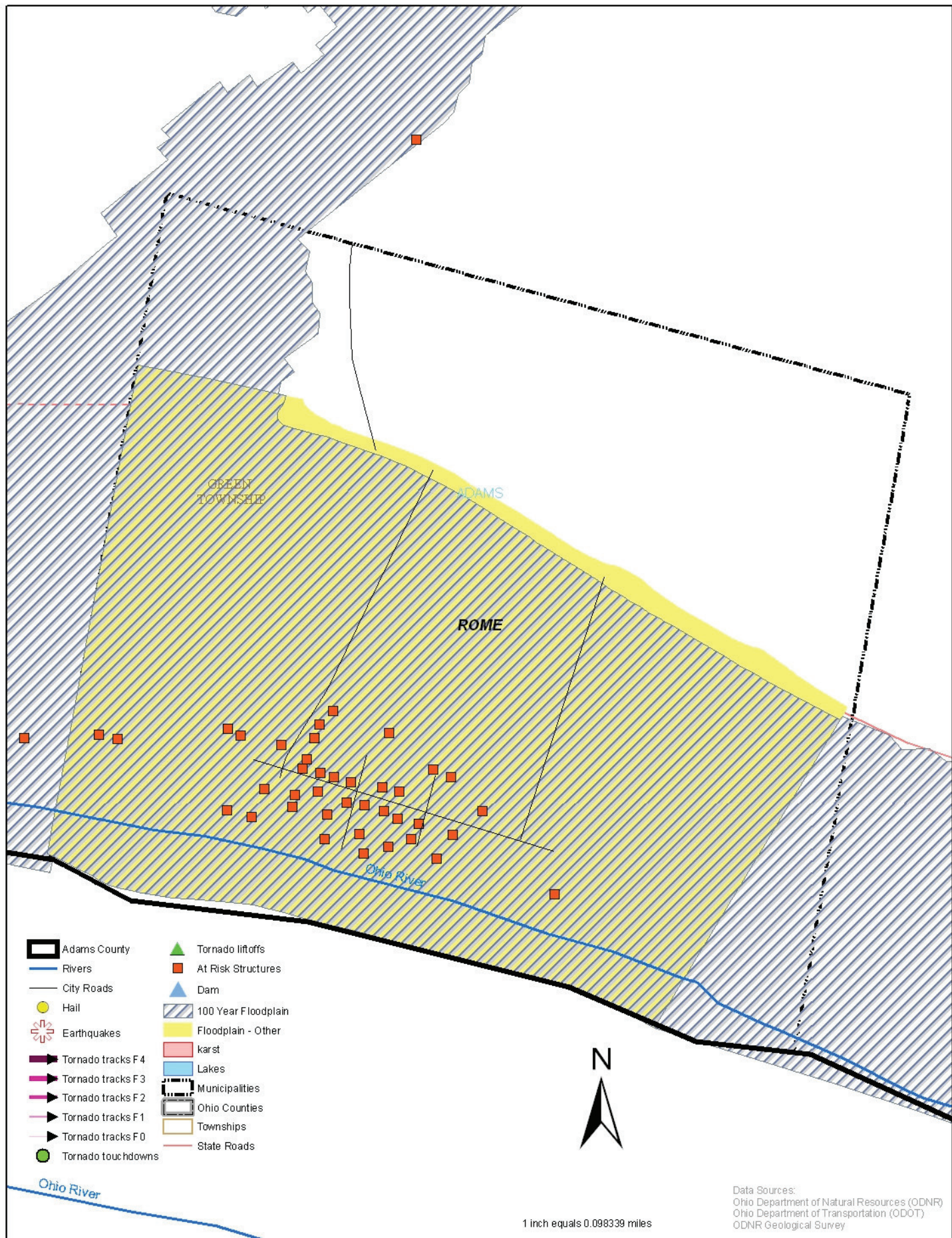
325 West Main Street  
 Suite 1200  
 Lorain, OH 44042

Telephone: (602) 569-2301  
 Facsimile: (602) 569-2304

**ADAMS COUNTY, OHIO  
 MAP G-7  
 COUNTYWIDE ALL NATURAL HAZARDS MITIGATION PLAN  
 Multi-Hazard Map of WEST UNION, OHIO**

**May 2008**

Job: 14575695



Data Sources:  
Ohio Department of Natural Resources (ODNR)  
Ohio Department of Transportation (ODOT)  
ODNR Geological Survey

**URS**

325 West Main Street  
Suite 1200  
Louisville, KY 40202  
Telephone: (502) 569-2300  
Facsimile: (502) 569-2304

**ADAMS COUNTY, OHIO**  
**MAP G-8**  
**COUNTYWIDE ALL NATURAL HAZARDS MITIGATION PLAN**  
**Multi-Hazard Map of ROME, OHIO**

**May 2008**

Job: 14575695